



Ana Parker Photography

YOUR WEDDING

at The Painswick



THE PAINSWICK



Say 'I love ewe' here...

Sitting pretty in the 'Queen of the Cotswolds' village of Painswick, there couldn't be a more perfect spot for romance.

Styled in the rather lovely Palladian passé and enjoying hilltop views, our house is full to the brim with a very special kind of Cotswolds chic.

Exchange your vows, feast on delicious food and dance the night away with a splendid shindig... we have spaces perfect for every part of your special day. From luxurious lounges with sink-into-me sofas, to the outdoor terrace with breathtaking views of the Painswick Valley, a unique bar, even a games room... all perfect for a romantic smooch.

When the party winds down and it's time for slumber, everyone can hideaway in one of our 17 bedrooms. For the happy couple, George's Suite beckons, complete with Romeo and Juliet balcony... and those views to swoon over.



All the bells & whistles...

Your wedding at The Painswick will one-of-a-kind and tailored to create a day you'll never forget!

Our House

Weddings at The Painswick are 'exclusive use' for up to 60 guests for the main event and then up to 80 for an evening bash! Versed for your wedding day takeover, we're home to:

- 'The Painswick' Restaurant, a perfect space for an intimate ceremony or some fabulous feasting.
- Two stylish lounges, with open log fires and plenty of space for gathering or dancing the night away later.
 - An intimate garden terrace and lawn with stunning valley views.
 - 17 bedrooms including The George's Suite

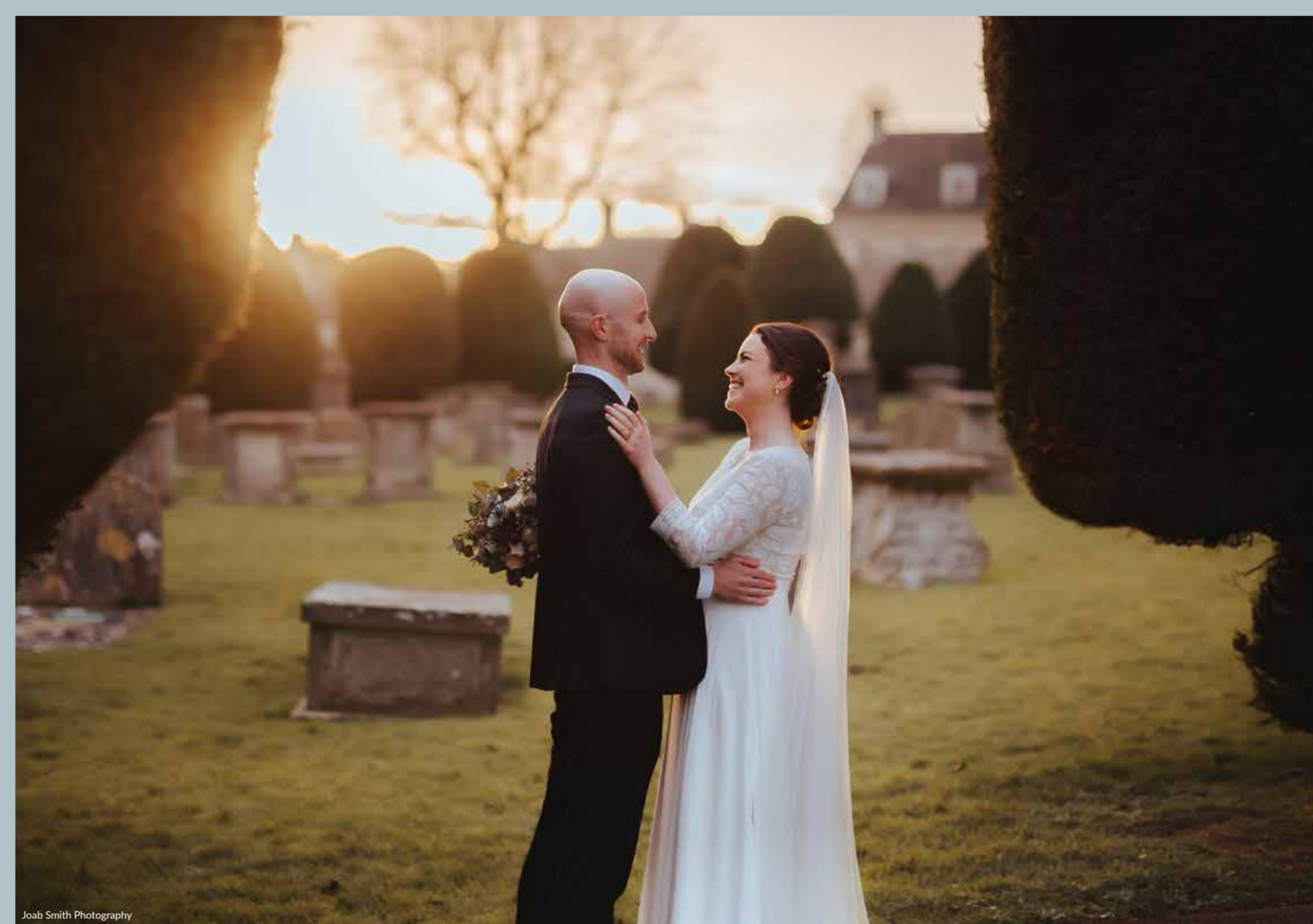


Ceremonies

We have a license for civil ceremonies, so beginning your day with us is entirely possible if you have an exclusive use wedding with us. Choose from the intimate terrace with dramatic valley vistas, or our once-upon-a-time Sunday school... 'The Painswick' Restaurant, which can host up to 60 guests.

St Mary's Church

If the ringing of bells is your pick, peek over the tops of our house and you'll see the beautiful spiral of St. Mary's Church sitting amongst the shadows of 99 glorious yew trees. This picture postcard church is the perfect match to a Cotswold countryside wedding.





Char Cook Photography



Joab Smith Photography





Char Cook Photography



Joab Smith Photography

Feasting

Feast, drink... and be married!

Fabulous food and feasting is at the very heart of our house

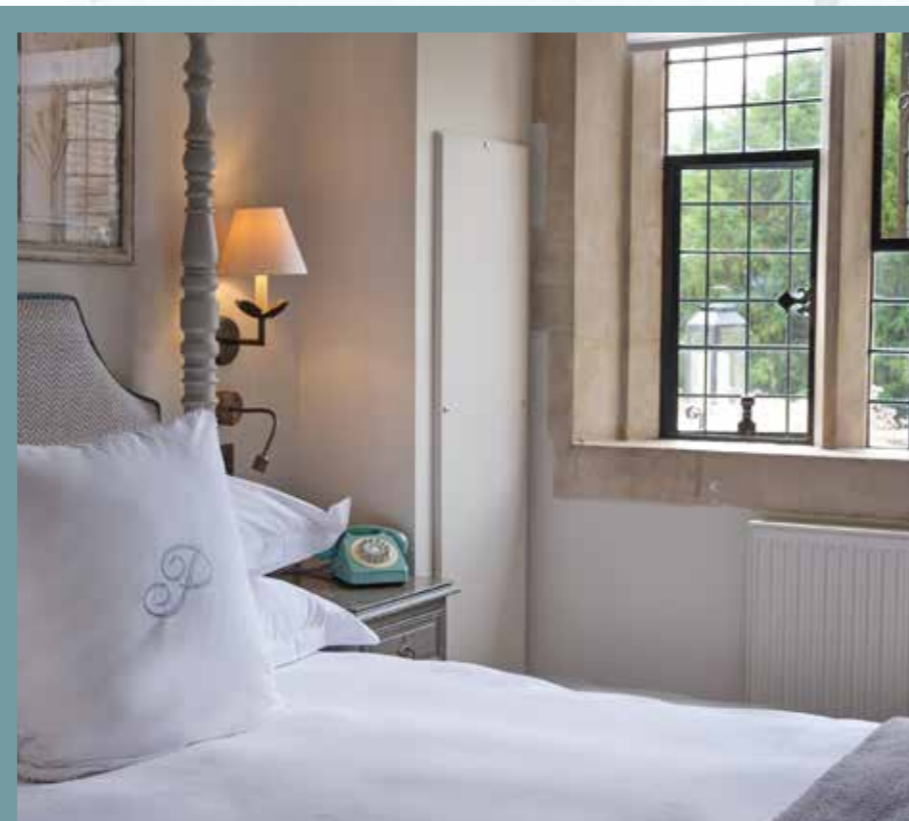
Chef and his team will create the most indulgent, delicious wedding breakfast for you and your guests to share.

When it comes to 'what,' the choice is yours... you can kick off wedded bliss with canapés worth celebrating on arrival, treat your wedding party to a three-course feast to die for, petit fours included... and when the 'dropping stage' hits, Chef will put on a spread to keep everyone in full swing until the birds start tweeting. (Oh, and not forgetting our hearty breakfasts, to soothe those morning-after-the-night-before blues!)

If vintages are your thing, we proudly showcase a wine list like no other—a traveller's tale of a sommelier's secret vineyards... including some very special bubbles to toast your dreamy day!







Our house is your home...

Staying Over

Home to 17 bedrooms styled just right for wedding day bubbles and robes, each boasts an understated kind of luxury that is distinct to The Painswick.

Ready for rooming we have...

1 Cosy | 2 Snug | 5 Terrace | 4 Hideaway
4 Palladian | 1 George's Suite

All Yours

When the house is 'All Yours,' let the fun begin! With your very own Cotswolds retreat for the night (or two at the weekend), you can enjoy the bedrooms, garden, lounges and restaurant... ALL to yourselves!* It's your home-from-home, where you're looked after with care in the uniquely relaxed style we're very proud of.

*For weekend 'do's'... Takeover begins when you check in the day before and ends the morning after (2 night stay).

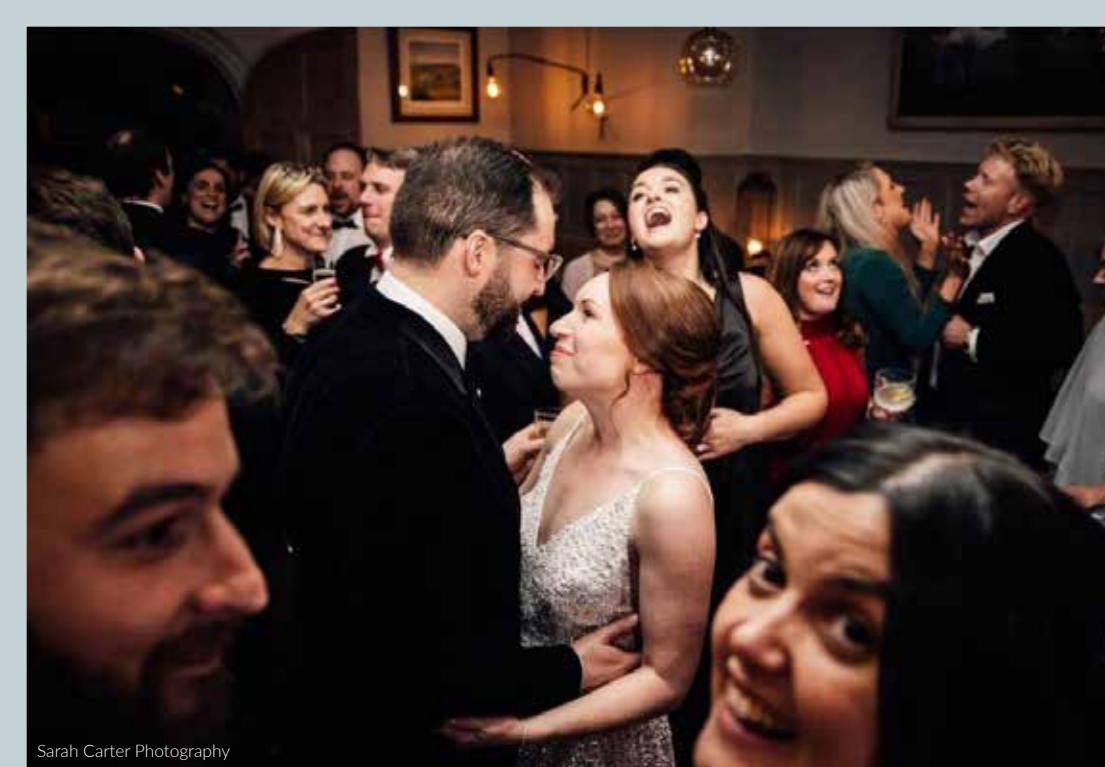
*For midweek 'do's'... The Painswick 'All Yours' begins on your wedding day and ends on check out (1 night stay).

Music & Dancing

With a whole-house takeover, music and a spot of 'getting on down' is a given! We only have three rules...

- 1. Guests must have bedrooms to retreat to, for when the dropping stage hits!*
- 2. This should be at 11.30pm... in consideration of our lovely neighbours.*
- 3. Dance-offs should take place where appropriate... and often!*





Sarah Carter Photography



Hannah May Miles Photography



Hannah May Miles Photography



Rob Tarren Photography



Joab Smith Photography



Char Cook Photography



Char Cook Photography



David Jenkins Photography

THE PAINSWICK

The Painswick . Kemps Lane . Painswick . Gloucestershire . GL6 6YB . 01452-813688
thepainswick.co.uk . enquiries@thepainswick.co.uk