



# the BOTree

PARTIES & EVENTS



# VIBRANT SPACES FOR CONNECTION

Spaces designed for connection. Where bold visions come alive and parties and celebrations gather. The canvas is yours to create.

AT A GLANCE

# Our Event Spaces

Whether you are hosting a business event, product launch or social celebration, our spaces provide the perfect setting.

VENUE / SPACE	CAPACITY	LAYOUT / STYLE	DIMENSIONS
77	Full venue: 500 standing Lower Floor: 350 standing Mezzanine: 150 standing	Lounge / Bar / VIP	402 sqm /4,331 sq.ft
Green Room	12 boardroom	Meeting / Breakout	50 sqm /543 sq.ft
LAVO	220 seated /360 standing	Dining / Events	465 sqm /5,010 sq.ft
The Screening Room	33 seated & panel	Screening / Q&A	60 sqm /647 sq.ft
Suites	8 boardroom /60 standing	Private events / VIP	Sizes vary

Capacities are approximate and may vary based on event setup.





# 77

Where bold visions come alive. A private street level entrance which can be branded for your event. 77 is set over two floors with a bar on each. The floor-to-ceiling LCD screen can show your backdrop for any drinks reception, launch, fashion show or live entertainment event.

**HIGHLIGHTS**

- 500 standing capacity
- Private entrance
- Split-level layout with bars
- State-of-the-art AV
- LCD screen
- Green room & breakout spaces
- Private ante-room for pre-event drinks
- Event personalisation
- Guests can stay at The BoTree

**DIMENSIONS**

- 402 sqm / 4331 sq.ft

**SOUND**

- L'Acoustics A10 Focus/Wide and KS21 Subs

**LIGHTING**

- 24x Robe Tetra
- 24x Robe Painte
- 2x Lasers & 8x Strobes
- 2.55 mm pitch and linear LED strips

**GRANDMA3 CONTROL DESK**

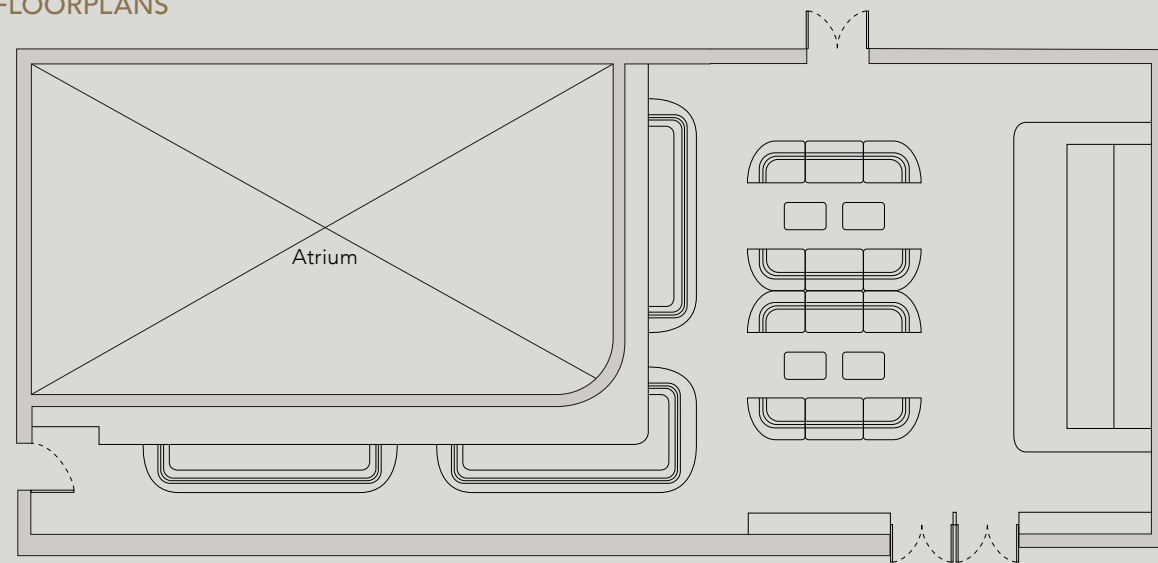
- Madrix
- Resolume
- Screen sizes available for standard use

**CAPACITY**

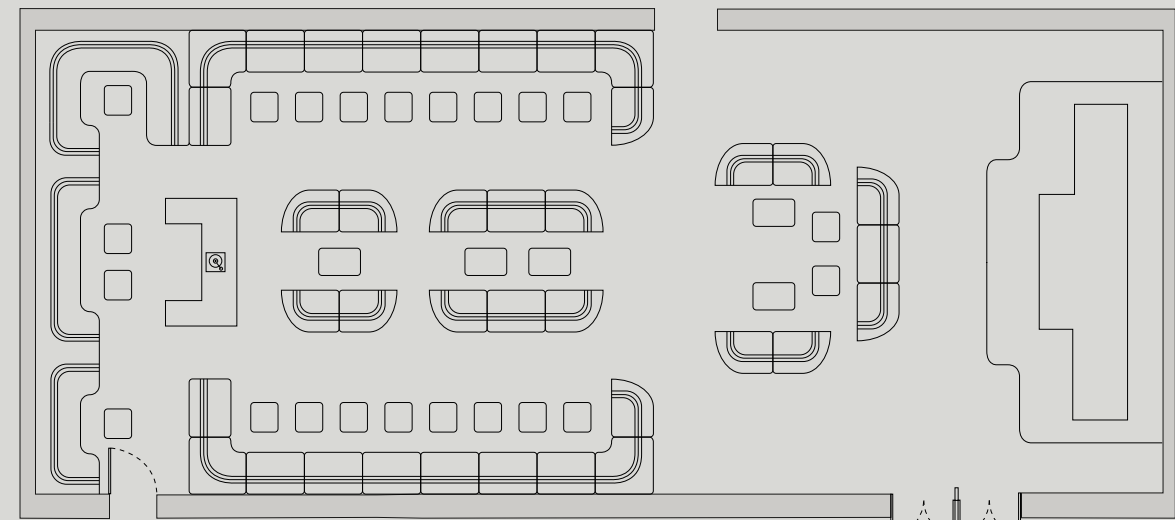
- Lower Floor: 350 standing
- Mezzanine: 150 standing
- Green Room: 12 boardroom style



**FLOORPLANS**



Mezzanine



Lower Floor

AT A GLANCE

# The Green Room

Adjacent to the event space 77, The Green Room can be used as a breakout area for larger events, for private board meetings, or for performers getting ready. Equipped with immersive AV and with different set ups available, The Green Room is a versatile space.

## HIGHLIGHTS

- Immersive AV
- Flavour-packed breaks, freshly prepared
- Different set up options available

## CAPACITY

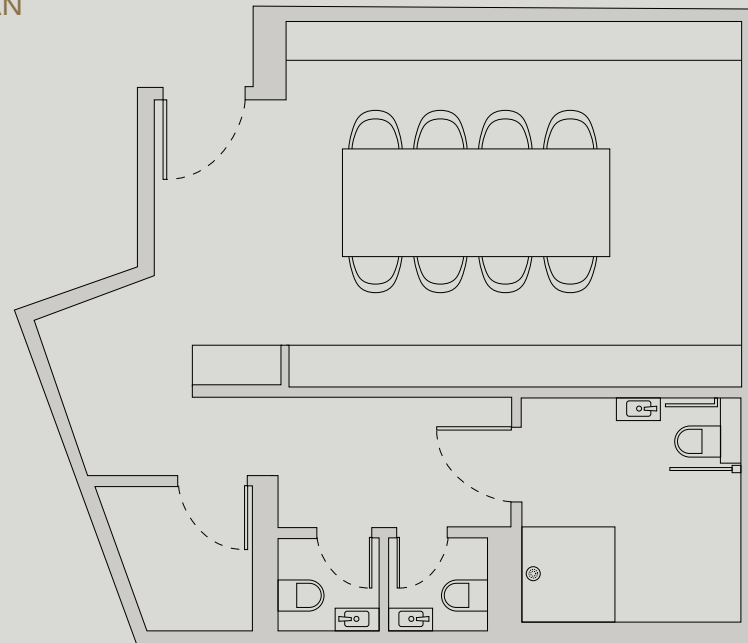
12 boardroom style

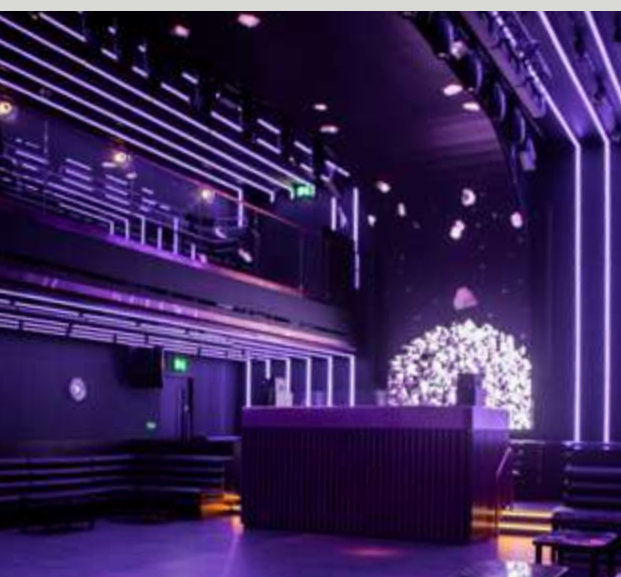
## DIMENSIONS

50 sqm / 543 sq.ft



FLOOR PLAN





AT A GLANCE

# LAVO

LAVO offers an elevated dining experience across two levels boasting an impressive bar and two spacious dining rooms dappled by sunlight from triple-height ceilings with skylight windows and luxurious Italian furnishings throughout.

## HIGHLIGHTS

- Private guest entrance
- Outdoor terrace
- Split-level setup
- Flexibility to hire a private floor or the whole restaurant
- Signature Italian culinary delights
- Perfect for live entertainment or DJ
- Guests can stay at The BoTree

## CAPACITY

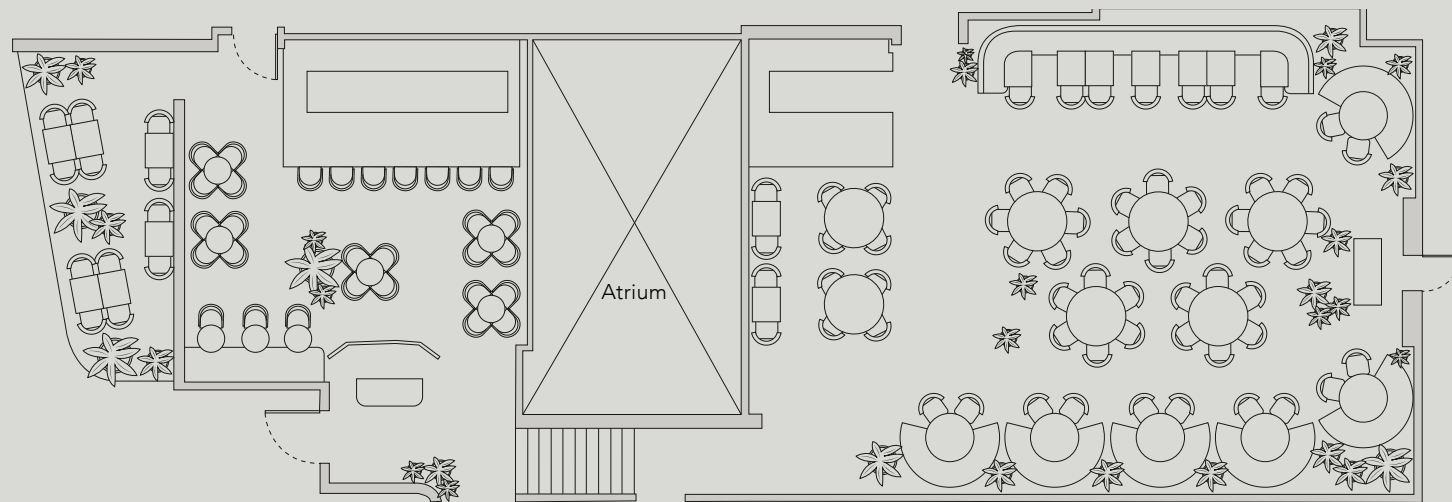
220 seated / 360 standing

## DIMENSIONS

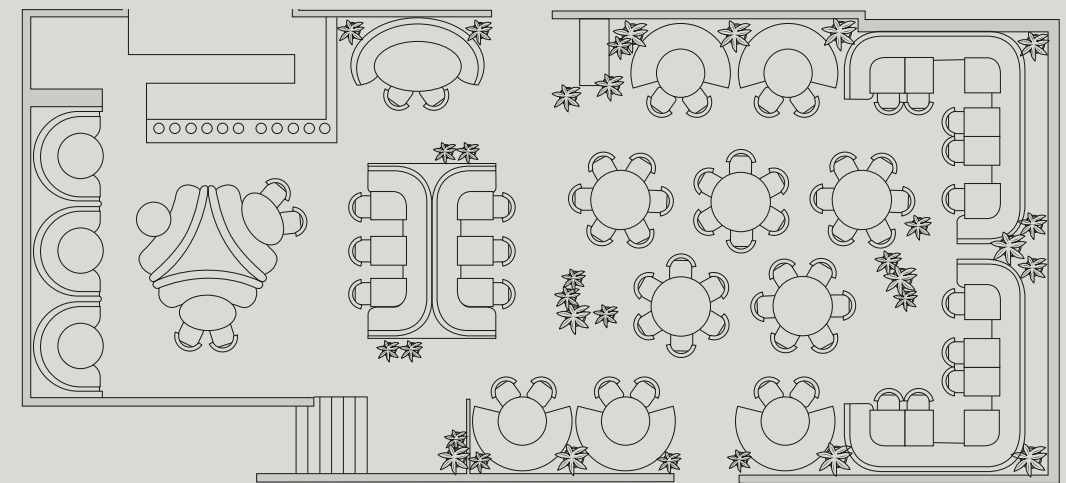
465 sqm / 5010 sq.ft



## FLOORPLANS



Upper Floor



Lower Floor



# ITALIAN BANQUETING

Our banqueting menus showcase the finest Italian cuisine with coastal flair. From traditional favourites to modern interpretations, all crafted with the freshest ingredients and served with impeccable style.

[View Our Banqueting Menu](#)



AT A GLANCE

# The Screening Room

Self-contained and versatile, the Screening Room is plush, chic and equally attuned to C-Suite training and Q&A sessions as it is to private screenings and social events. With classic red-velvet reclining Pullman seats and a 213" screen, it's perfect for films and sporting events too.

## HIGHLIGHTS

- Private breakout space
- 5000 mm (W) x 2110 mm (H), 213" diagonal screen
- Ultra HD 4K projection system with Barco HODR projector
- Dolby ATMOS Surround Sound System
- Screen mirroring with iPad
- Connect via Apple TV for live viewings
- Suitable for both business & private events
- Private ante-room for pre-event drinks

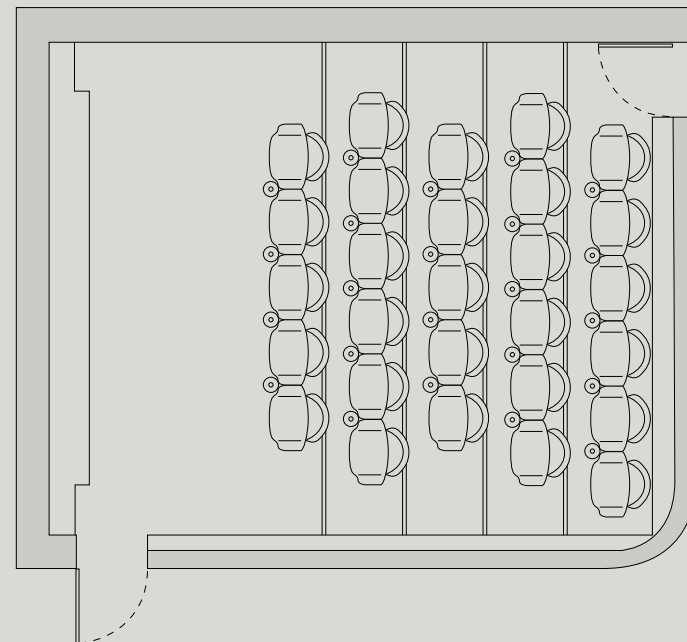
## CAPACITY

33 seated plus panel as required

## DIMENSIONS

60 sqm / 647 sq.ft

## FLOORPLAN





AT A GLANCE

# Suites

For private events that need a VIP feel, a setting that's stunning yet intimate and with service only a luxury hotel can provide, the suites are a perfect fit. There are several shapes and sizes and each comes with a dedicated butler ensuring unrivalled personal service.

## HIGHLIGHTS

- Floor to ceiling windows
- Vibrant interiors
- Informal setting for social or professional events
- Privacy
- Bedroom can be closed off
- A true VIP experience
- Butler for dedicated assistance

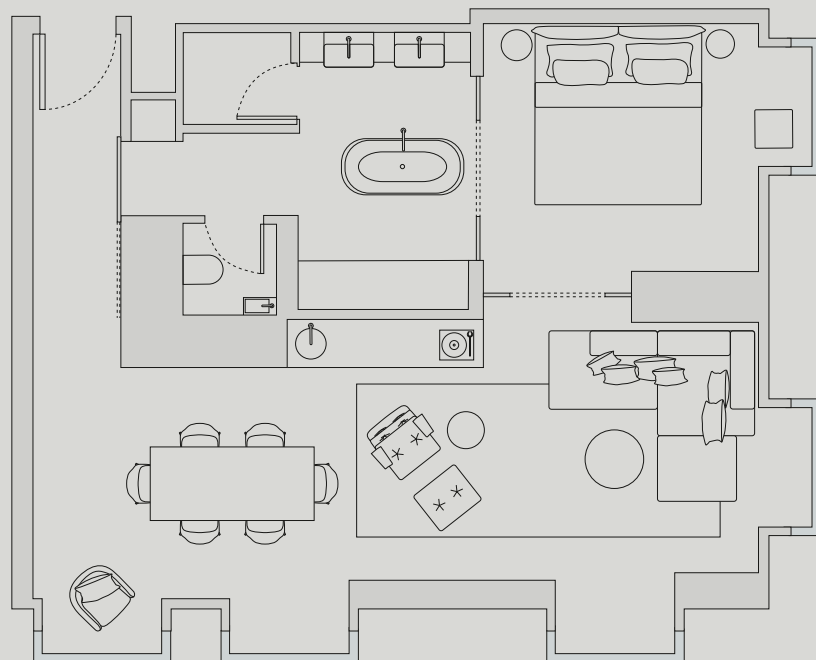
## CAPACITY

8 boardroom style / 60 people standing

## DIMENSIONS

Sizes vary

## FLOORPLAN



Vibrant connections at The BoTree.  
Come and join us.

To speak to us about your event,  
here's the email you need.

Enquire now

the  
**BoTree**

30 Marylebone Lane, London W1U 2DR  
events@thetree.com | 0207 309 9700

thetree.com  
@the\_botree  
@thetreebar  
@lavalondon

