



# HOG'S BACK HOTEL & SPA

Farnham

Just outside London lies a surprisingly beautiful stretch of rolling hills and green valleys, on which the Hog's Back Hotel sits proudly. Inside the hotel, you'll find a bar and restaurant, bright and spacious rooms, plus a spa, pool and fully equipped leisure club for pure relaxation or an energising workout.

With Guildford and the Surrey Hills on your doorstep, and top attractions like Legoland, Windsor and Thorpe Park only a short drive away, the location couldn't be better.



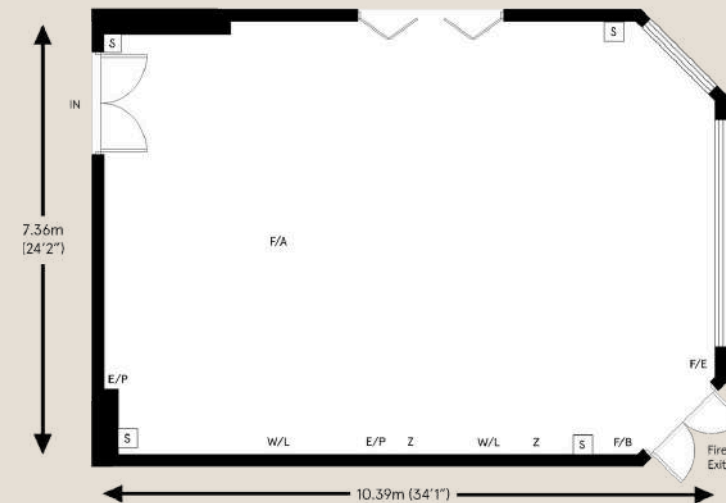
- Gatwick Airport** - 24 miles
- Heathrow Airport** - 20 miles
- M3 motorway** - 5 miles
- Farnham Station** - 1.3 miles
- Tesla EV chargers**
- Free Wi-Fi**
- Bedrooms** - 96 rooms
- Bar & Restaurant**
- Event spaces** - 5
- Views over Surrey Hills**

# THE GARDEN ROOM

Bright, inviting, and perfectly sized, the Garden Room is ideal for smaller private functions. Whether you're hosting a board meeting, an intimate celebration, or a focused training session, this charming space offers comfort, privacy, and a relaxed atmosphere.

- Boardroom**
- Cabaret**
- Classroom**
- Banqueting**
- Hollow Square**
- Theatre**
- U-Shape**

24      40      24      50      -      60      20



# THE GARDEN ROOM



meetingsandevents@suryahotels.co.uk | 01252782345 | www.suryahotels.co.uk  
Farnham, Surrey, GU10 1EX



**HOG'S BACK HOTEL & SPA**  
Farnham, Surrey, GU10 1EX

MEETINGS AND EVENTS



# THE PARK SUITE

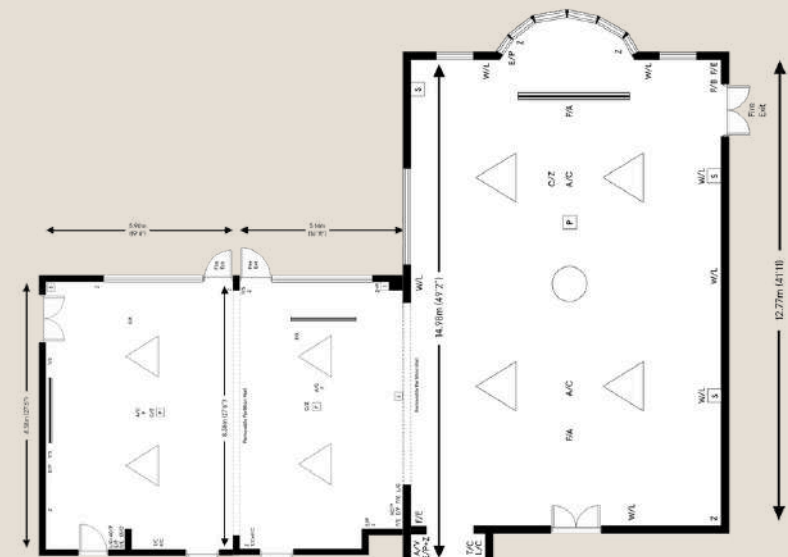
Scan me to see this space!



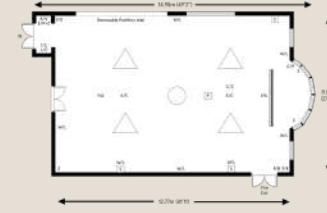
Spacious and versatile, the Park Suite features a layout that can be hired as a three-room suite or easily be divided into three separate rooms to suit your event. Whether you're hosting a corporate meeting, training session, or social gathering, this flexible space adapts to your needs, offering comfort, style, and practicality.

**Please note: The Park Suite can be hired as a full three-room suite or booked as individual spaces.**

Boardroom	Cabaret	Classroom	Banqueting	Hollow Square	Theatre	U-Shape
40	60	40	160	-	150	40



# THE BALLROOM

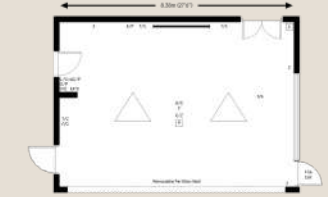


The largest space within the Park Suite, the Ballroom is perfect for grand meetings, conferences, and memorable celebrations. With its flexible layout, it can be tailored to suit both large-scale events and more intimate gatherings.

Boardroom	Cabaret	Classroom	Banqueting	Hollow Square	Theatre	U-Shape
40	60	40	90	-	120	36



# PARK SIDE

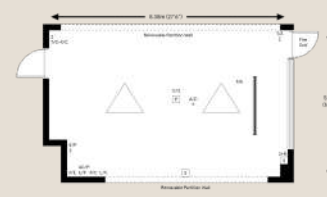


Park Side is a stylish space featuring natural lighting that creates a bright, elegant atmosphere for any event. Part of the expansive Park Suite, this room can be hired individually or combined with Park View and / or The Ballroom for larger occasions.

Boardroom	Cabaret	Classroom	Banqueting	Hollow Square	Theatre	U-Shape
12	15	15	20	-	25	10



# PARK VIEW



Park View is a bright, welcoming space, flooded with natural light that combines a polished finish with a comfortable atmosphere. Ideal for any event, it can be booked on its own, joined with Park Side for additional capacity, or used as part of the full Park Suite for larger gatherings.

Boardroom	Cabaret	Classroom	Banqueting	Hollow Square	Theatre	U-Shape
15	20	20	30	-	35	15

