



SOPWELL  
HOUSE

# BAR/BAT MITZVAH

Celebrations for up to 300 people





Enjoy the  
freedom to create  
the perfect  
atmosphere for  
your simcha.





# Bar / Bat Mitzvah Sit Down Packages

## ADULT PACKAGE

### INCLUDES:

Drinks reception – 2 glasses per guest from a selection of:

- Kir Royal
- House Champagne
- Bucks Fizz
- Orange Juice

Chef's selection of hot & cold canapés – 6 per person

Three course set menu with tea, coffee and petit fours

### ST ALBAN SUITE

Minimum guest numbers of 80 adults and 40 children apply

### VICTORIA LOUIS SUITE

Minimum guest numbers of 55 adults and 25 children apply

*Please note that room hire will be applicable for parties of below minimum numbers stated*

-

We require a minimum of a 10 bedroom commitment offered at a preferential rate

£269.00 B&B on Fridays & Sundays

£299.00 B&B on Saturdays

£128.00 per person

## CHILDREN / TEENAGE PACKAGE

### INCLUDES:

Drinks reception – 2 glasses per person from a selection of:

- Fruit Juices
- Mocktails

Chef's selection of hot & cold canapés – 3 per person

Three course sit down menu

### ST ALBAN SUITE

Minimum guest numbers of 80 adults and 40 children apply

### VICTORIA LOUIS SUITE

Minimum guest numbers of 55 adults and 25 children apply

*Please note that room hire will be applicable for parties of below minimum numbers stated*

-

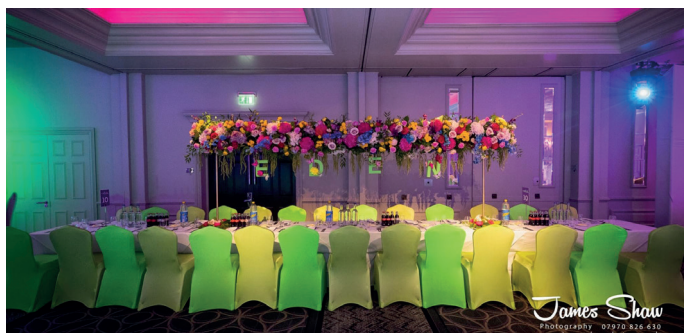
We require a minimum of a 10 bedroom commitment offered at a preferential rate

£269.00 B&B on Fridays & Sundays

£299.00 B&B on Saturdays

£75.00 per person

(3 – 13 years old)



# Bar / Bat Mitzvah Live Stations Packages

## ADULT PACKAGE

### INCLUDES:

Drinks reception – 2 glasses per guest from a selection of:

- Kir Royal
- House Champagne
- Bucks Fizz
- Orange Juice

Chef's selection of hot & cold canapés – 6 per person

Two live food stations of your choice from the menu with 5 Pass Around Bowl Foods with Tea, Coffee and Petit Fours

### ST ALBAN SUITE

Minimum guest numbers of 80 adults and 40 children apply

### VICTORIA LOUIS SUITE

Minimum guest numbers of 55 adults and 25 children apply

*Please note that room hire will be applicable for parties of below minimum numbers stated*

- We require a minimum of a 10 bedroom commitment offered at a preferential rate

£269.00 B&B on Fridays & Sundays  
£299.00 B&B on Saturdays

£158.00 per person

## CHILDREN / TEENAGE PACKAGE

### INCLUDES:

Drinks reception – 2 glasses per person from a selection of:

- Fruit Juices
- Mocktails

Chef's selection of hot & cold canapés – 3 per person

Two live food stations of your choice from the menu with 5 Pass Around Bowl Foods

### ST ALBAN SUITE

Minimum guest numbers of 80 adults and 40 children apply

### VICTORIA LOUIS SUITE

Minimum guest numbers of 55 adults and 25 children apply

*Please note that room hire will be applicable for parties of below minimum numbers stated*

- We require a minimum of a 10 bedroom commitment offered at a preferential rate

£269.00 B&B on Fridays & Sundays  
£299.00 B&B on Saturdays

£105.00 per person

(3 – 13 years old)



# Upgrade Options

## COCKTAILS

---

**Upgrade your drinks to the following cocktails for £2.00 per drink**

- Aperol Spritz
- Tommy's Margarita
- Classic Mojitos
- Espresso Martini
- Bellini
- Mimosa Cup
- Rum Punch

**Upgrade your drinks to the following cocktails for £4.00 per drink**

- Lychee Martini
- Rose champagne

## FOOD

---

**For £18.00pp add additional food stations to your drinks reception or late night bites:**

- Scottish Salmon & Bagel - *Highland smoked salmon & citrus cured gravadlax with accompaniments*
- Burrito Station - *Build your own burrito with choice of tasty rice, beans, protein and fresh salsas*
- Middle Eastern - *Lamb or chicken shawarma, falafel, grilled halloumi, flat breads in a wrap or bowl*
- Indian Curries - *With fragrant rice and naan bread*
- Fish and Chips - *Battered or crumbed Atlantic cod, or roast chicken dinner pies, with fries*
- Salt Beef - *Salt beef served on either rye bread, bloomer or bagel with accompaniments*

**For £24.00pp add premium food stations:**

- Sushi - *Enjoy the very best offerings from Omboo*
- Steak - *From burgers to grilled meats, served with all the usual accompaniments*

*Food upgrades need to be applied for the whole party*

## CANAPÉS

---

**Additional canapés from £3.00 each**

Upgrade to bowl foods from £6.00 each  
- Minimum 3 to be upgraded

## DESSERTS

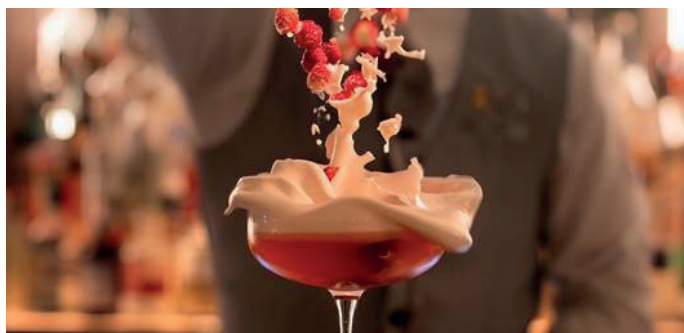
---

**Fruit Platters from £65.00 each**

*Based on a table of 10*

**Chocolate Fountain from:**

- £6.99 per person (Minimum number - 100 guests)
- £6.50 per person (Up to 150 guests)
- £5.90 per person (Up to 200 guests)
- £5.40 per person (up to 250 guests)



# Celebrate and party in style at Sopwell House!

---

## BOOK NOW

---

+44 (0) 1727 750466

[events@sopwellhouse.co.uk](mailto:events@sopwellhouse.co.uk)

[www.sopwellhouse.co.uk](http://www.sopwellhouse.co.uk)

**DOB**  
HOTELS

Cottonmill Lane St. Albans  
Hertfordshire AL1 2HQ

LIFESTYLE™  
*Preferred*  
HOTELS & RESORTS