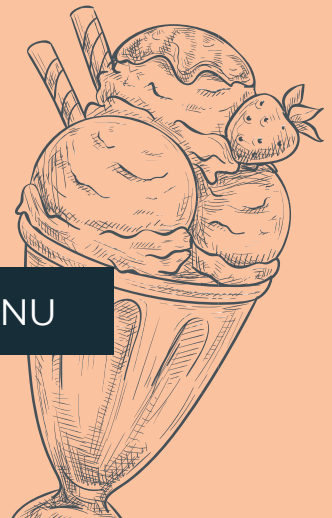
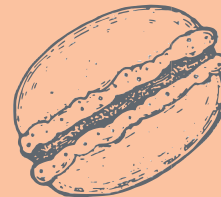
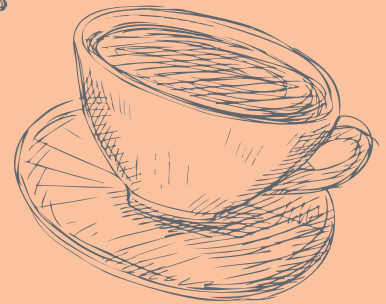




SOPWELL  
HOUSE



## DESSERT MENU

*We are committed to using sustainable and ethical suppliers for all of our produce. We can only accommodate allergen or intolerance requests for afternoon tea with a minimum advance notice of 48 hours. All requests are treated with extra care, nevertheless due to the nature of our offering we cannot guarantee that any item served is 100% allergen or intolerant free. Please advise a member of our service team before ordering if you have any food allergies or special dietary requirements or require information on ingredients used in our dishes. Please note dishes may contain traces of allergens. (V) Vegetarian dishes, (VE) Vegan dishes.*

*All prices are in £ sterling and are inclusive of VAT at the standard rate. A discretionary service charge of 12.5% will be added to your final bill.*

*October 2024*

## DESSERTS

---

STICKY TOFFEE PUDDING	<b>8.5</b>
<i>Vanilla ice cream</i>	
CRÈME BRÛLÉE	<b>8.5</b>
BREAD AND BUTTER PUDDING	<b>8.5</b>
<i>Vanilla custard</i>	
CHOCOLATE DELICE	<b>9.5</b>
<i>Stracciatella ice cream</i>	
CARAMELISED APPLE AND ALMOND TART	<b>9.5</b>
<i>Chantilly cream</i>	
BLUEBERRY CHEESECAKE (VE)	<b>9.5</b>
<i>Seasonal berries</i>	
ARTISAN BRITISH CHEESE BOARD	<b>15</b>
<i>4 cheeses, quince paste, grapes &amp; biscuits</i>	
ICE CREAM OR SORBET PER SCOOP	<b>3</b>
<i>Vanilla, Stracciatella, chocolate, blackcurrent sorbet, mango sorbet</i>	

---

## TEA

---

TEA SERVED BY THE POT PER PERSON	<b>4.95</b>
<i>Newby Teas and infusions offer definitive examples of the greatest teas, skillfully picked for unmatched freshness.</i>	

*Choose from the following specially selected loose leaf teas and infusions: Sopwell signature English blend, green sencha, milk oolong, darjeeling, jasmine, rooibos, earl grey, apple strudel, mango & strawberry, ginger & lemon, peppermint & chamomile, lapsang souchong, masala chai*

*All served with choice of skimmed milk, oat, soya or almond alternatives. Decaffeinated tea available. Please ask server when ordering.*

## COFFEE

---

MACCHIATO	<b>4.95</b>
CAPPUCCINO	<b>4.95</b>
CAFFÉ LATTE	<b>4.95</b>
AMERICANO	<b>4.95</b>
CAFFÉ MOCHA	<b>4.95</b>
FILTERED COFFEE	<b>4.95</b>
HOT CHOCOLATE	<b>4.95</b>
ESPRESSO - SINGLE / DOUBLE	<b>3 / 4.95</b>

*Decaffeinated teas & coffees, oat, almond & soya milk are available upon request.*

## DESSERT & FORTIFIED WINE

---

	50ML	
DOW'S FINE TAWNY, NV 19.0%	<b>6.50</b>	
DOW'S PORT LBV 19.0%	<b>9</b>	
DOW'S RUBY PORT, NV 19.0%	<b>6</b>	
HARVEYS AMONTILLADO MEDIUM DRY 17.5%	<b>7</b>	
LA GUITA MANZANILLA 12.5%	<b>6.50</b>	
REGENCY CREAM SHERRY 17.0%	<b>5.50</b>	
TIO PEPPE SHERRY, GONZALEZ BYASS, FINO, NV 15.0%	<b>6.50</b>	
	75ML	BOTTLE
CHATEAU GRAND JAUGA, SAUTERNES, FRANCE	<b>13</b>	<b>44</b>
FLORALIS MOSCATEL ORO CATALUNYA, TORRES, SPAIN	<b>8</b>	<b>42</b>