



THE HEADLAND



HOTEL, COTTAGES & SPA

Your Perfect Wedding Day at
The Headland

2023 – 2024





Whether you are planning an intimate wedding for two, a gathering of loved ones, or taking over the whole hotel exclusively for your family and friends, we take your ideas and deliver the occasion of dreams in one of Cornwall's most idyllic locations.





The Ceremony

Bring your guests together on the bottom lawn for far reaching views across Fistral Bay or gather in one of our private suites for some old-style grandeur and charm. There are 6 unforgettable settings to say 'I do' in.



The Ceremony

All our ceremonies include:

- › Hire of one of our beautiful private suites for the ceremony
- › The reception toast afterwards

Prices start from:

The Ceremony		Prices start from
Little Fistral	Up to 12 people	£500
The Morning Room	Up to 12 people	£500
The Gazzle	Up to 30 people	£800
The Fistral	Up to 45 people	£1,150





The Celebration

Whether you step out of one of our ceremony suites as a married couple or arrive at The Headland as newlyweds, a celebration is in order!



The Celebration

All our packages include:

- › The Champagne Toast
- › The Wedding Afternoon Tea or Wedding Dinner in one of our beautiful private suites
- › A selection of house wine to accompany your dining
- › A bridal suite for the married couple on the wedding night with a bottle of champagne
- › Canapés can be arranged as an optional extra

Prices start from:

The Celebration		Prices start from
Little Fistril	2 – 12 people	£1,500
The Morning Room	2 – 12 people	£1,500
The Gazzle	13 – 30 people	£2,500
The Fistril	31 – 45 people	£3,000

**Additional hotel rooms can be booked for guests with a 10% discount, subject to availability.*



THE HEADLAND



The Evening Celebration

All our evening celebrations include:

- › Hire of our beautiful Fistral Suite for the evening
 - › The welcome toast
 - › The Buffet Dinner
 - › DJ and lights
- › Five discounted rooms on the night for friends and family
- › *Prices start from £3000 for up to 60 guests*



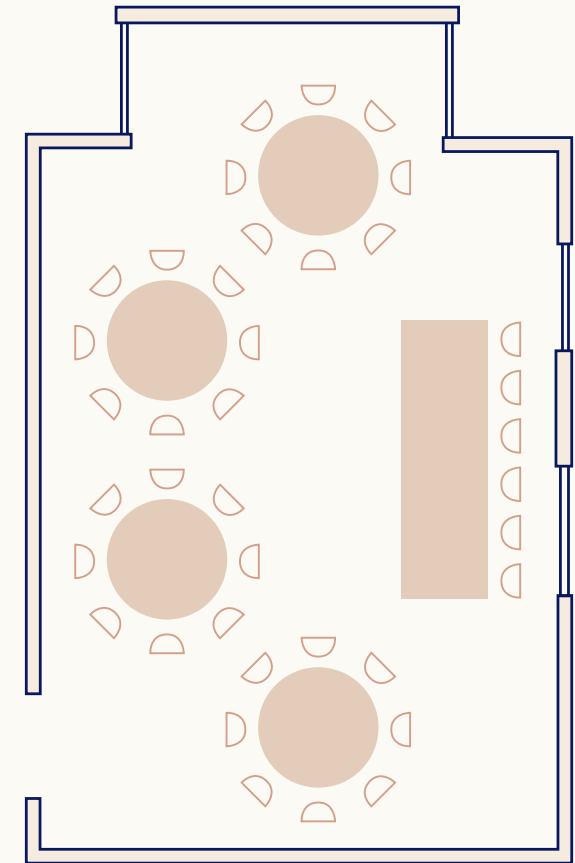
Fistral Suite

A spacious, elegant room with high ceilings and a Victorian open fireplace. The deep sash windows offer a glimpse of the world-famous beach that gives this suite its name as well as flooding the room with natural light.

693 sq ft/69 sq m

Up to 45 people

- The Ceremony
 - › The Celebration
 - › The Evening Celebration
 - › (up to 60 guests)
-





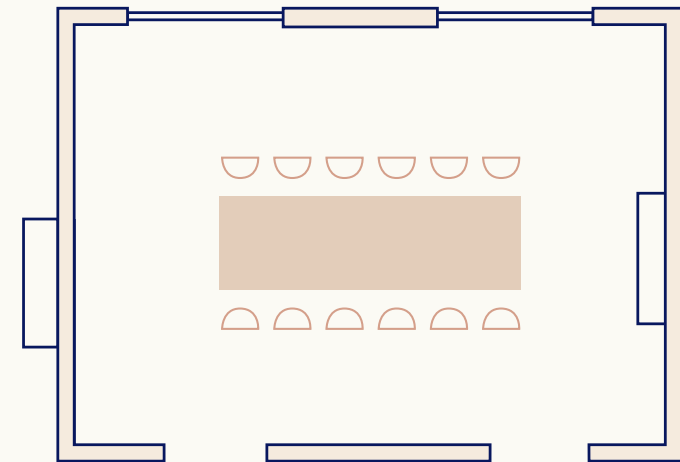
The Morning Room

Traditionally furnished, this delightful room offers views over the hotel grounds and lends itself perfectly to smaller wedding parties and elopements.

280 sq ft/28 sq m

Up to 12 people

- › The Ceremony
 - › The Celebration
-





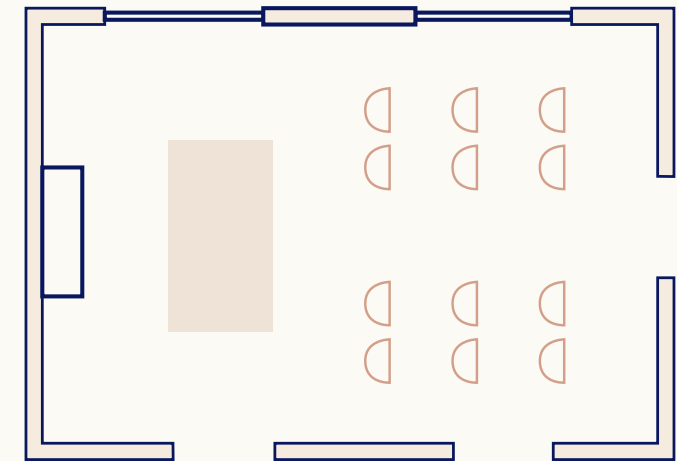
Little Fistral

Featuring views over the hotel grounds, Little Fistral is a beautiful and intimate ceremony and wedding celebration space.

280 sq ft/28 sq m

Up to 12 people

- › The Ceremony
 - › The Celebration
-





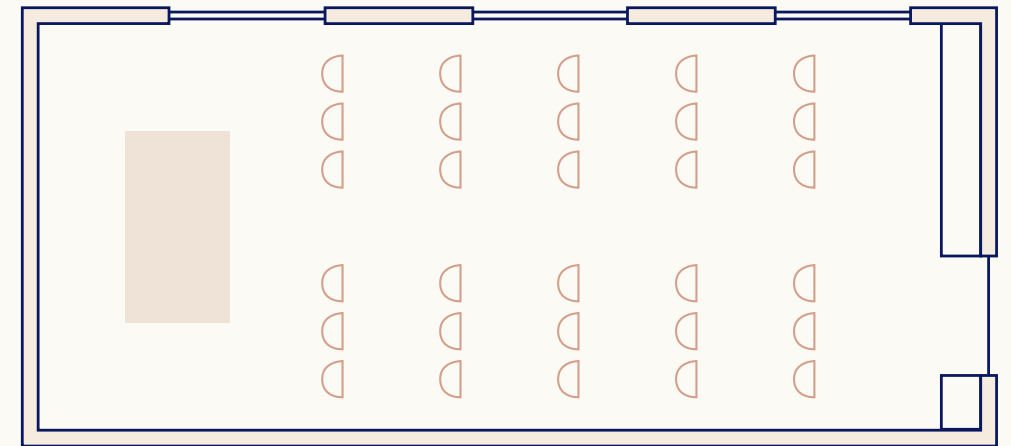
The Gazzle

The tall statement windows flood the room with natural light, offering views over the grounds to the front of the hotel.

390 sq ft/39 sq m

Up to 30 people

- › The Ceremony
 - › The Celebration
-

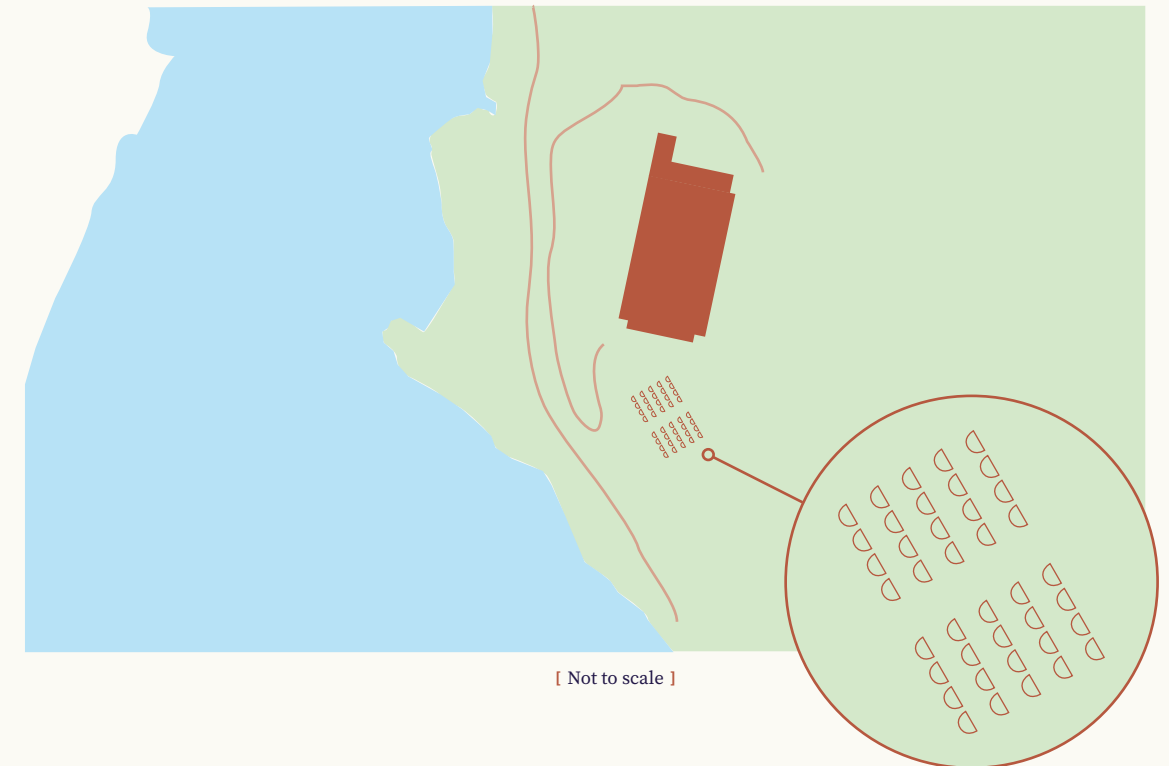




Outdoor weddings

Set upon a cliff top overlooking Fistral Bay, the bottom lawn offers jaw dropping views across the ocean and the magic of a beachside wedding.

Up to 45 people
› The Ceremony



The Fistral Suite will be reserved for you and your guests just in case the weather changes.



The finer details

- › Remember to book your registrar for your special day.
- › We have some wonderful local businesses to recommend when you start to consider who to engage for the finer details, including florists, photographers and more.



*Newquay Airport
15 minutes' drive*



*Room for multiple
helicopter landings*



*Parking for
200 cars*



*Newquay rail station
10 minutes' drive*



*Newquay harbour
10 minutes' walk*

The Headland is ideally located for international travellers, being fifteen minutes' drive from Newquay Airport, which is suitable for commercial and private aircraft.

The eleven acres that The Headland sits in offers plenty of space for multiple helicopters to land safely.

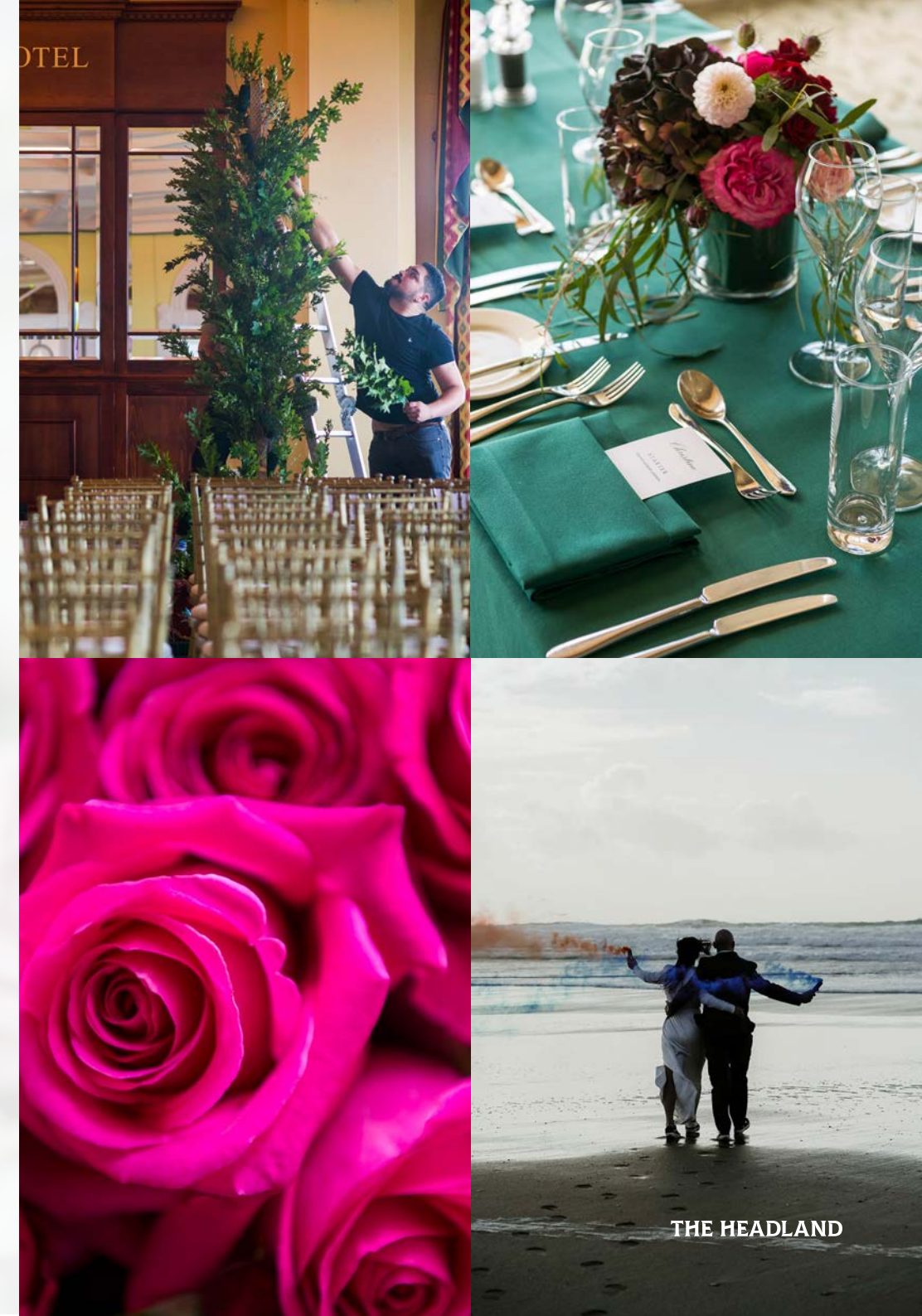
With car parking for 200 cars, all guests at The Headland can park easily.

For more sustainable travel options, Newquay rail station (ten minutes' drive) links via Par to the Penzance to Paddington rail line. Guests can arrive at high tide via boat into Newquay Harbour (ten minutes walk).

Photography used with permission from the following partners:

Home Nansledan <http://homenansledan.co.uk/>. Pura Vida Cornwall <https://www.puravidacornwall.com/photography>. Lucy Gosling <https://www.lovefromlucyphotography.com/>. Anthony Greenwood <https://anthony-greenwood.com/>.

Prices are correct as of November 2022.



THE HEADLAND



Contact our team: Call our wedding coordinator on 01637 872211
or email us at events.coordinator@headland.co.uk.

The Headland Fistral Beach, Newquay, Cornwall, TR7 1EW, England
+44 (0) 1637 872 211 | reception@headlandhotel.co.uk | www.headlandhotel.co.uk

