

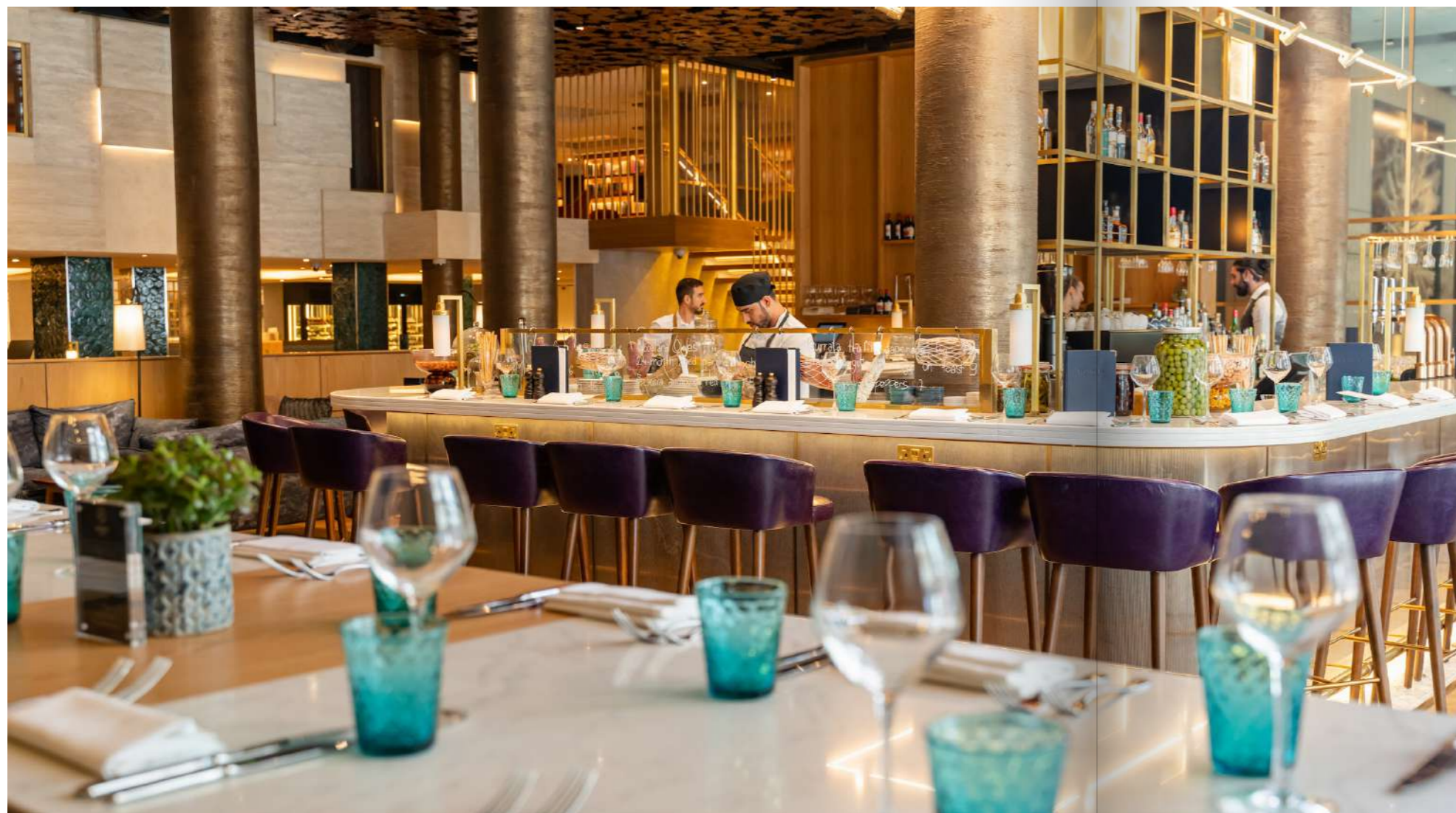


MIDDLE
EIGHT

COVENT GARDEN

BRINGING PEOPLE
TOGETHER IN STYLE

EVENT BROCHURE



WELCOME TO MIDDLE EIGHT

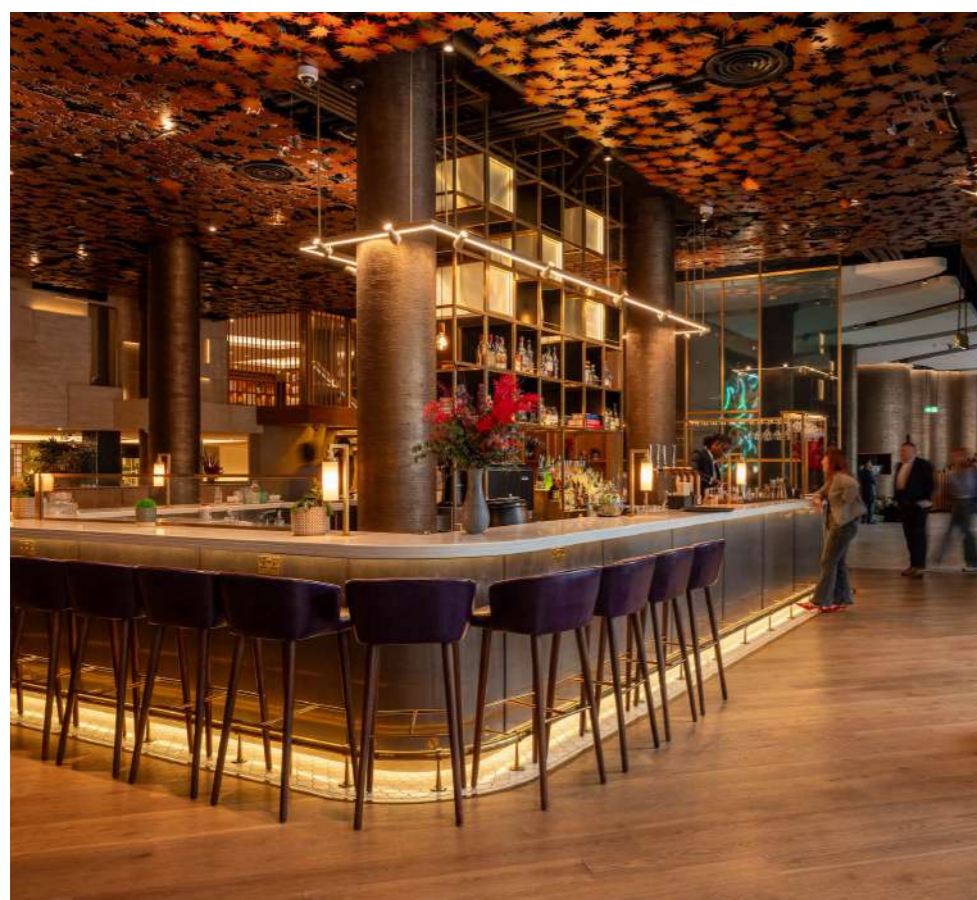
One of London's most vibrant neighbourhoods, Covent Garden is home to Middle Eight. Offering unique style, supreme comfort and exceptional service, our 180-room luxury hotel has a personality that mirrors the character and buzz of its location.

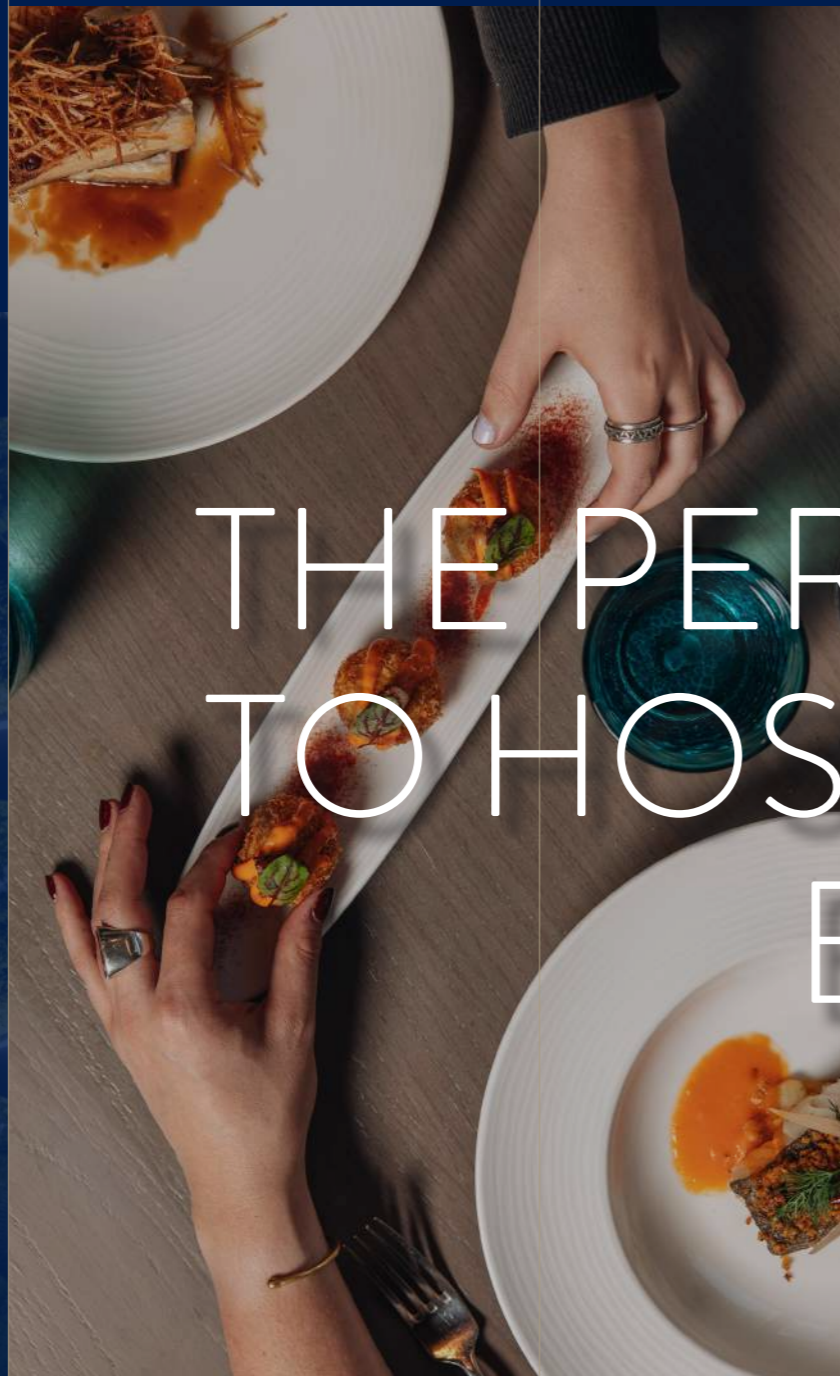
Middle Eight offers different experiences in different spaces throughout the day and into the night. Just as inviting for a quick morning coffee or a long lazy lunch as it is for cocktails and exceptional Italian food in the evening. DJs and a live music programme take the experience beyond the culinary. Middle Eight is the perfect, central location to host your event.

Whether your event is large or small, relaxed or formal, business or pleasure, we have a space that will allow you to host an event that will live long in your guests' memories.

We look forward to welcoming you.

MIDDLEEIGHT.COM





MIDDLE EIGHT

THE PERFECT VENUE TO HOST YOUR NEXT EVENT

Whether your event is large or small, relaxed or formal, business or pleasure, we have a space that will allow you to host an event that will live long in your guests' memories.



COVENT GARDEN

WHERE HISTORY, CULTURE, AND ENERGY COLLIDE

From world-class theatres and boutique shopping to iconic landmarks and hidden cocktail bars, Covent Garden is a destination in itself. Just moments from Middle Eight, you'll find vibrant street performances, luxury retailers, renowned restaurants, and some of London's most celebrated cultural spots—all within easy walking distance. Whether you're in the mood for an evening at the opera, a stroll along the Thames, or a late-night bite, the best of the city is right on your doorstep. Top attractions within walking distance include:

- | | | | |
|---|-------------------------|----|---------------------|
| 1 | London Transport Museum | 7 | Royal Opera House |
| 2 | Lincoln Inn Fields | 8 | Theatre Royal Drury |
| 3 | Piccadilly Circus | 9 | Novello Theatre |
| 4 | The British Museum | 10 | Trafalgar Square |
| 5 | Russell Square | 11 | Covent Garden |
| 6 | Neal's Yard | 12 | Soho Square Gardens |



MIDDLE EIGHT

A harmonic shift in the Heart of London

Middle Eight: A short section (typically of eight bars) in the middle of a conventionally structured popular song, generally of different character from the other parts of the song.



SYCAMORE

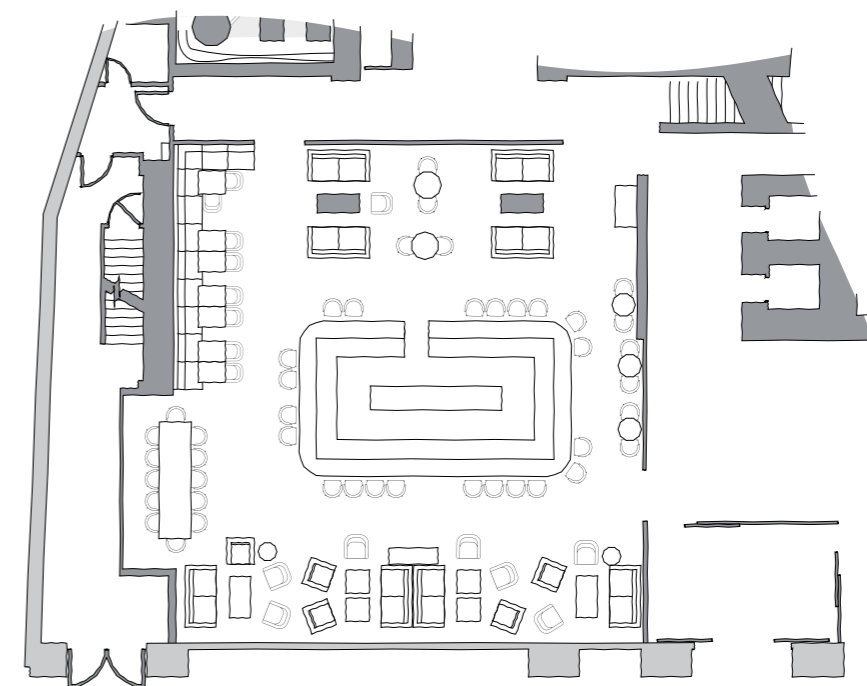
COVENT GARDEN

BAR

192 m² | L: 14m | W: 14m | H: 5m

By day, a relaxed comfortable place to get together, by night live DJs on a number of nights, and a West End crowd transform the Bar into a place to see and be seen. Perfect for your cocktail party, or for more space and culinary delights, take over the bar and restaurant for the ultimate reception and sit-down dinner.

SYCAMORE BAR



CAPACITIES

Semi-Private Hire
60 people

Exclusive Hire
180 people

Standing Reception Bar + Restaurant
350 people





SYCAMORE

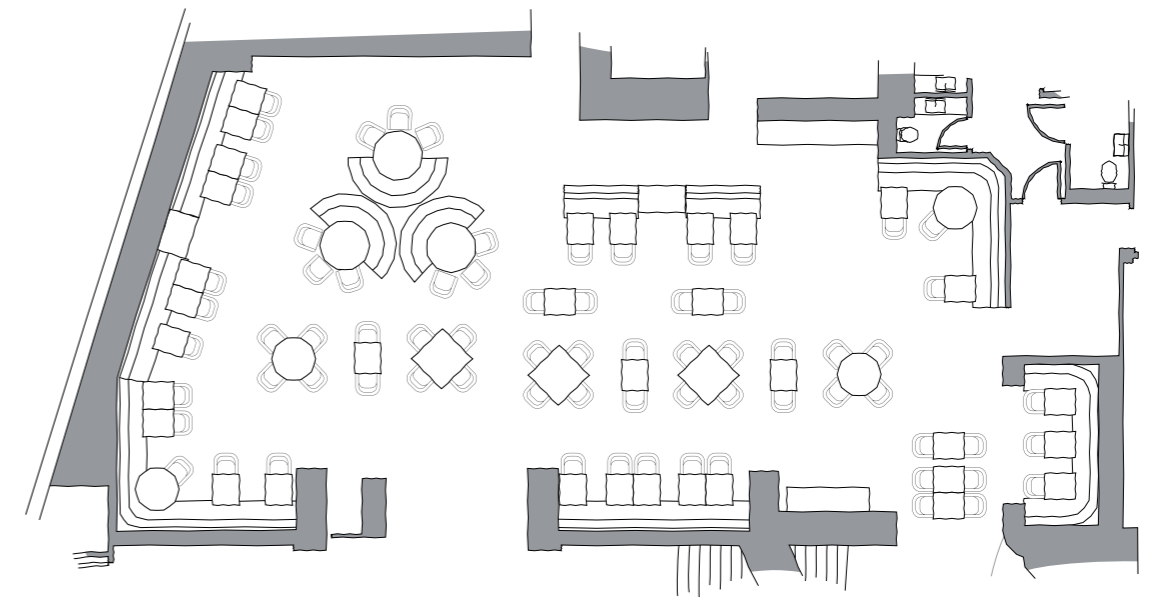
COVENT GARDEN

RESTAURANT

160 m² | L: 20m | W: 8m | H: 2m

With authentic Italian dining and an atmosphere that reflects our lively Covent Garden neighbourhood, Sycamore Covent Garden is an ideal place to host business meetings, to meet friends or stop by for a quick pre-theatre dinner. For more formal events, we can host everything from Christmas lunches for 12 through to cocktail receptions for 150 people.

SYCAMORE RESTAURANT



CAPACITIES

Semi-Private
Dining
70 people

Exclusive Hire
Dining
110 people

Exclusive Hire
Reception
150 people

Standing Reception
Bar + Restaurant
350 people





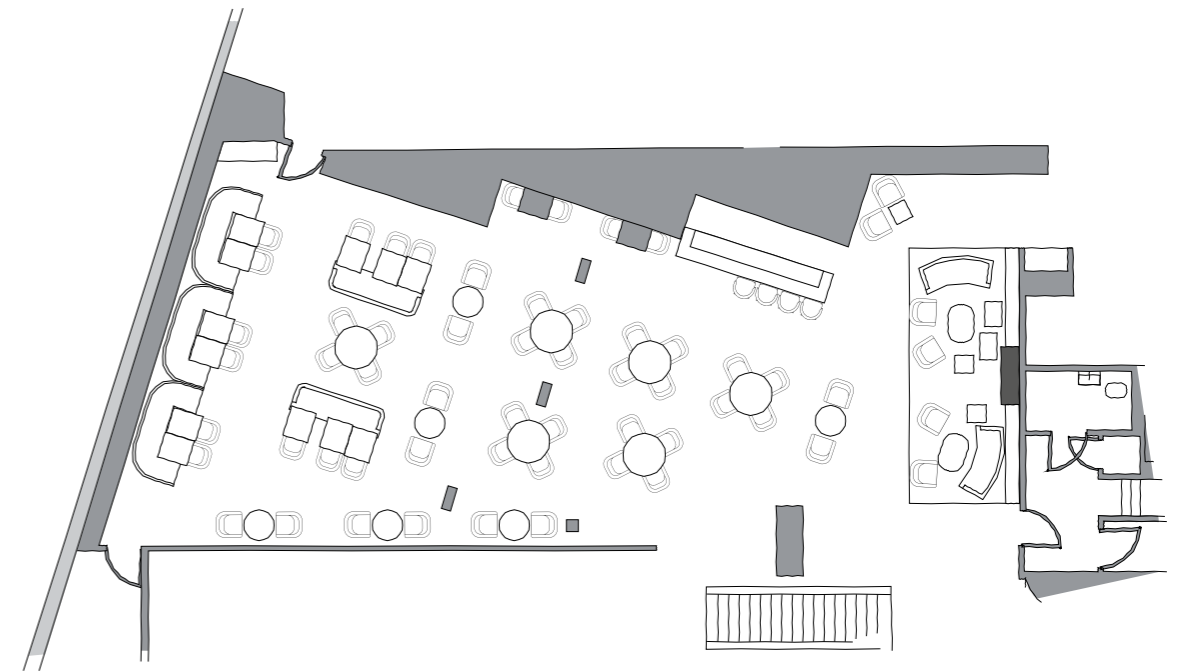
THE BALCONY

BALCONY & BAR

160 m² | L: 20m | W: 8m | H: 2m

A space to make your own. Designed for playing board games, reading books or just catching up with friends, The Balcony is a secluded and flexible space perfect for Afternoon Tea or semi-private dining for small parties. Overlooking the Sycamore Covent Garden Bar through glazed windows, this space is also suited to hosting product launches, networking events and team meetings.

THE BALCONY



CAPACITIES

Cabaret
50 people

Banquet
80 people

Theatre
100 people

Standing Reception
100 people





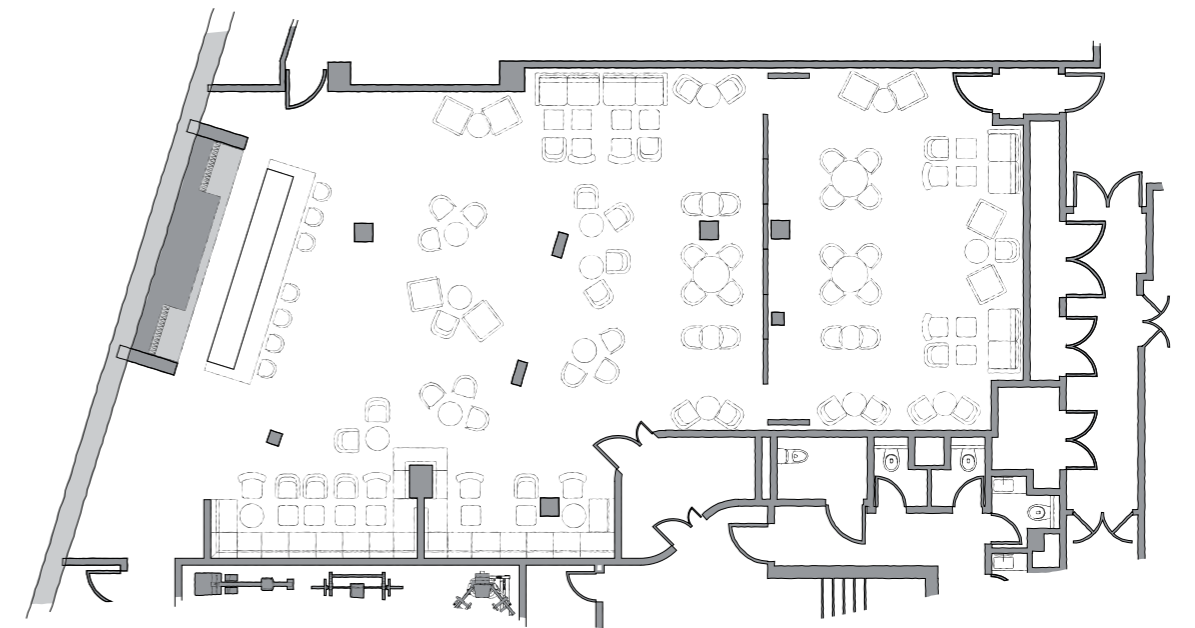
QT

SPEAKEASY & EVENT VENUE

200 m² | L: 19m | W: 11m | H: 3.8m

QT is built upon the foundations of the iconic music venue, Kingsway Hall. Our late-night, modern take on a classic speakeasy bar is hidden away in the basement and has its own street-side private entrance. With a stage, a high-end sound system, a green room and a private kitchen, QT can host fashion shows, live music, product launches, receptions and parties. It also has a 164" retractable screen for cinema nights and multimedia events. Your imagination is the only deciding factor.

QT



CAPACITIES

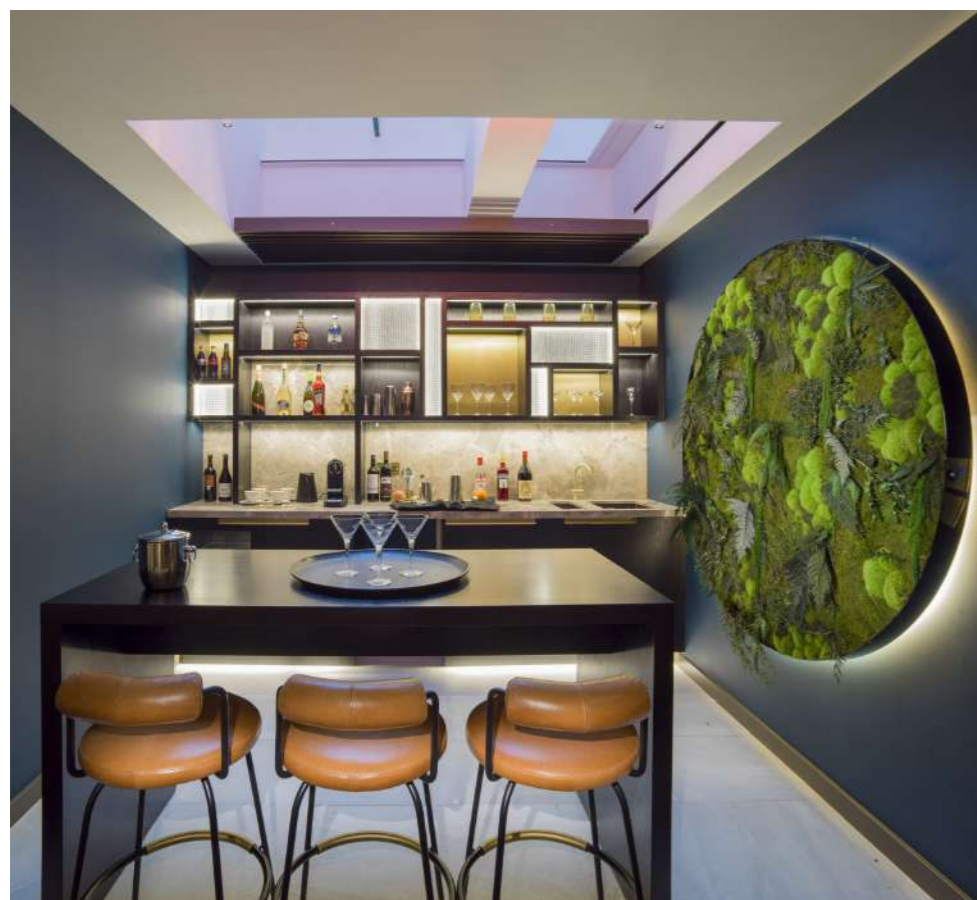
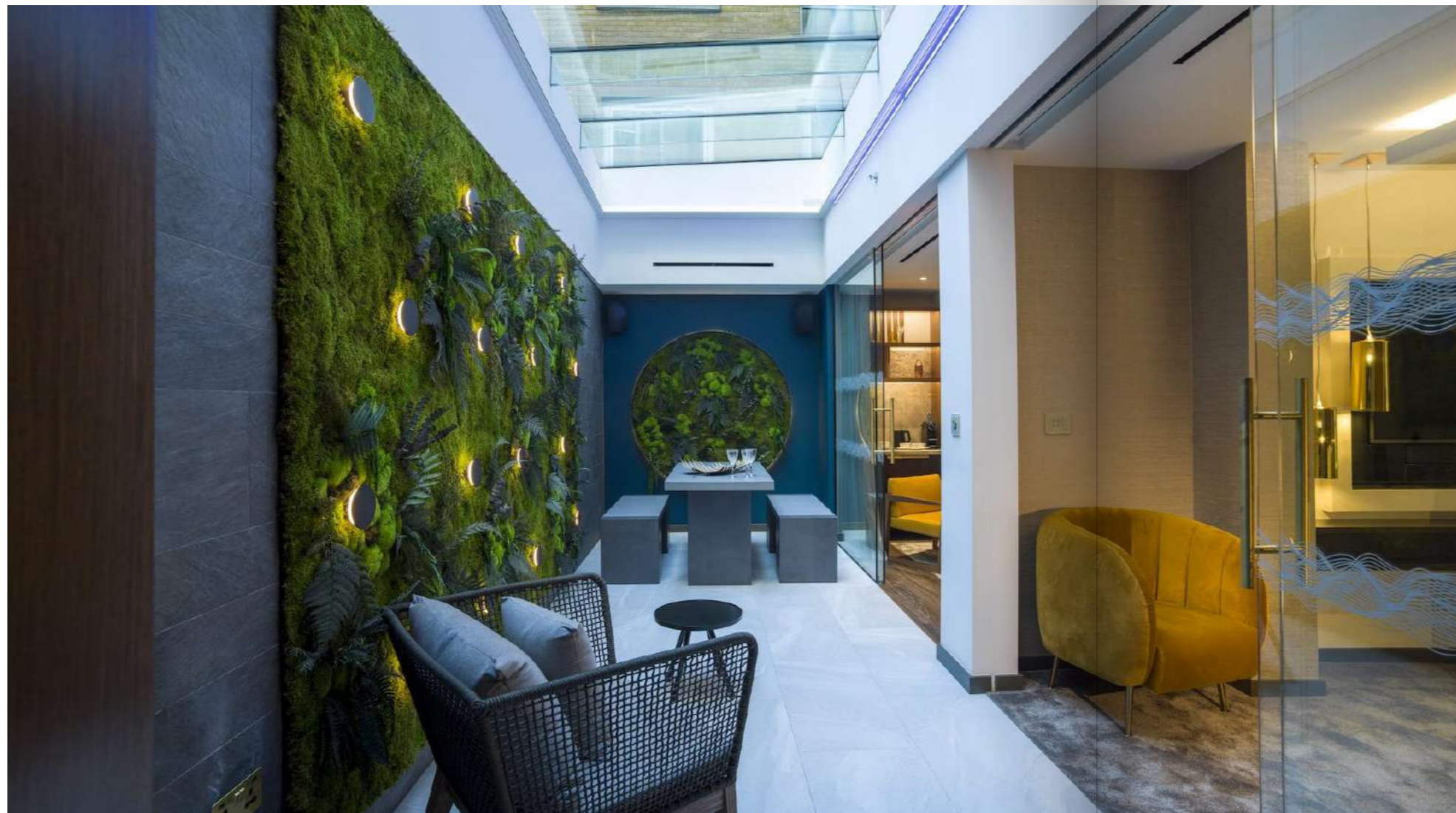
Cabaret
64 people

Theatre
85 people

Banquet
92 people

Standing Reception
110 people





PRIVATE & FLEXIBLE

LUXURY SUITES

At Middle Eight, our suites redefine luxury, offering more than just a place to stay—they provide an exclusive setting for intimate private dinners and discreet business meetings. Spacious seating and dining areas, soothing water features, and even indoor walled gardens or outdoor terraces create a refined yet relaxed atmosphere. The marble-finished bathrooms, underfloor heating, and freestanding bathtubs add an extra touch of indulgence.

Whether hosting a dinner, a strategy session, a celebration, or wanting to stay the night, our suites offer privacy, elegance, and effortless style.

MIDDLE EIGHT

OUR COMMITMENT TO SUSTAINABILITY



At Middle Eight, we are committed to operating our business sustainably and responsibly. We believe in reducing our environmental footprint, supporting local communities, and providing our guests with eco-friendly options. This policy outlines our approach to sustainability and our commitment to continuous improvement.

We are dedicated to minimizing our impact on the environment and reducing the carbon footprint of the hospitality industry by focusing on the following areas:

- Energy Efficiency
- Sustainable Sourcing
- Water Conservation
- Biodiversity
- Waste Reduction
- Awareness

We encourage the use of electric vehicle charging in the local area. The closest EV Charging Station is a 9 minute walk away, located at Russell Square.

Please ask a member of the team if you have any questions on the hotels 'green journey' and to find out how you can get involved email hello@middleeight.com.

For more details on the Green Tourism Award visit www.green-tourism.com.



FOOD & BEVERAGE

LOCAL SUPPLIERS

We aim to have seasonal menus that provide premium locally sourced produce. By working with suppliers in our community, we are helping reduce our carbon footprint by cutting down on food miles and supporting local businesses. It also helps our customers experience and enjoy the taste and flavours of London and the surrounding area.



PROUD TO BE CERTIFIED

INCLUSIVITY

We believe great hospitality starts with inclusivity. We're committed to offering inclusive hospitality for our LGBTQ+ guests, so we've completed training to become Proud Certified. Everyone is welcome and free to be themselves here - no matter who they are or who they love.



FIND US

Perfectly positioned in the vibrant heart of Covent Garden, Middle Eight puts you within easy reach of London's best dining, shopping, and entertainment. With excellent transport links nearby, arriving couldn't be easier—whether by train, tube, car, or plane.

BY CAR

We do not offer on-site car parking. NCP London Covent Garden is a 3-minute walk away and can be found at Parker Mews, Holborn, London WC2B 5NT and is open 24 hours a day, 7 days a week. The closest electric vehicle charging station is a 9 minute walk away, located at Russell Square.

BY TUBE

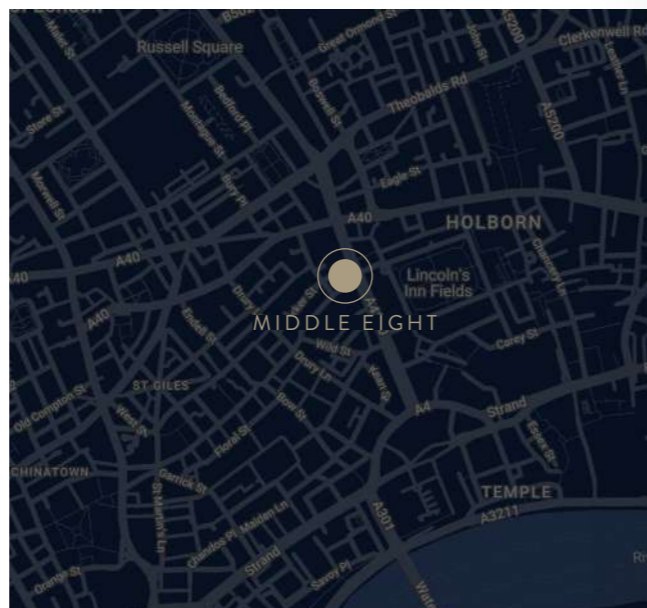
Holborn Underground Station is a 1-minute walk from the hotel and has connections to the Central and Piccadilly Line. Covent Garden Underground Station is a 5-minute walk and is on the Piccadilly Line.

BY TRAIN

We're easily accessible from Euston, Charing Cross, and Waterloo. Take a short taxi ride from the station or continue your journey via tube to Covent Garden or Holborn.

BY BUS

Bus Stop M (Kingsway/Holborn) is a 1-minute walk from Middle Eight with routes towards Waterloo and Trafalgar Square. Bus Stop N (Holborn) is short 2-minute walk away with routes towards London Euston, Hampstead Heath and Russell Square.



FROM LONDON'S MAIN AIRPORTS

London Heathrow Airport

Middle Eight can be reached using the Piccadilly Line from Heathrow Airport Terminals 1,2, 3, Terminal 4 & Terminal 5. This will take approx. 50 minutes. The Heathrow Express runs to London Paddington station. From there take the Bakerloo line to Oxford Circus and change to the Central line to Holborn station. If you are travelling to us by car, this will take approx. 50 minutes via the A312 and M4, through Chiswick and Hammersmith.

London Gatwick Airport

From London Gatwick, you can reach London Victoria Station via the Gatwick Express in 30 minutes. Take the London Underground Victoria Line to Green Park Station and change to the Piccadilly Line to Holborn or Covent Garden. Alternatively, take the bus from Victoria Station Grosvenor Gdns (Stop S) to Liverpool Street, arriving at Aldwych (Stop D). Middle Eight is a 7-minute walk from here.

London City Airport

We recommend taking public transport. Take the DLR from London City Airport and change at Bank Station for the Central Line to Holborn Station. This will take approx. 32 minutes. A taxi will take approx 30 minutes. If you would like us to arrange your transfers, please contact us on +44 (0) 207 309 9300. Charges apply.

CONTACT US

To speak to a member of our team about your event, please call us on 020 7309 9300 or email events@middleeight.com

MIDDLE EIGHT, 66 GREAT QUEEN STREET, LONDON WC2B 5BX



MIDDLE EIGHT

COVENT GARDEN

L.V.X.[™]

Preferred
HOTELS & RESORTS

MIDDLEEIGHT.COM

