

MIDDLE EIGHT

COVENT GARDEN

OUR SUITES

L.V.X.SM

Preferred

HOTELS & RESORTS



Welcome

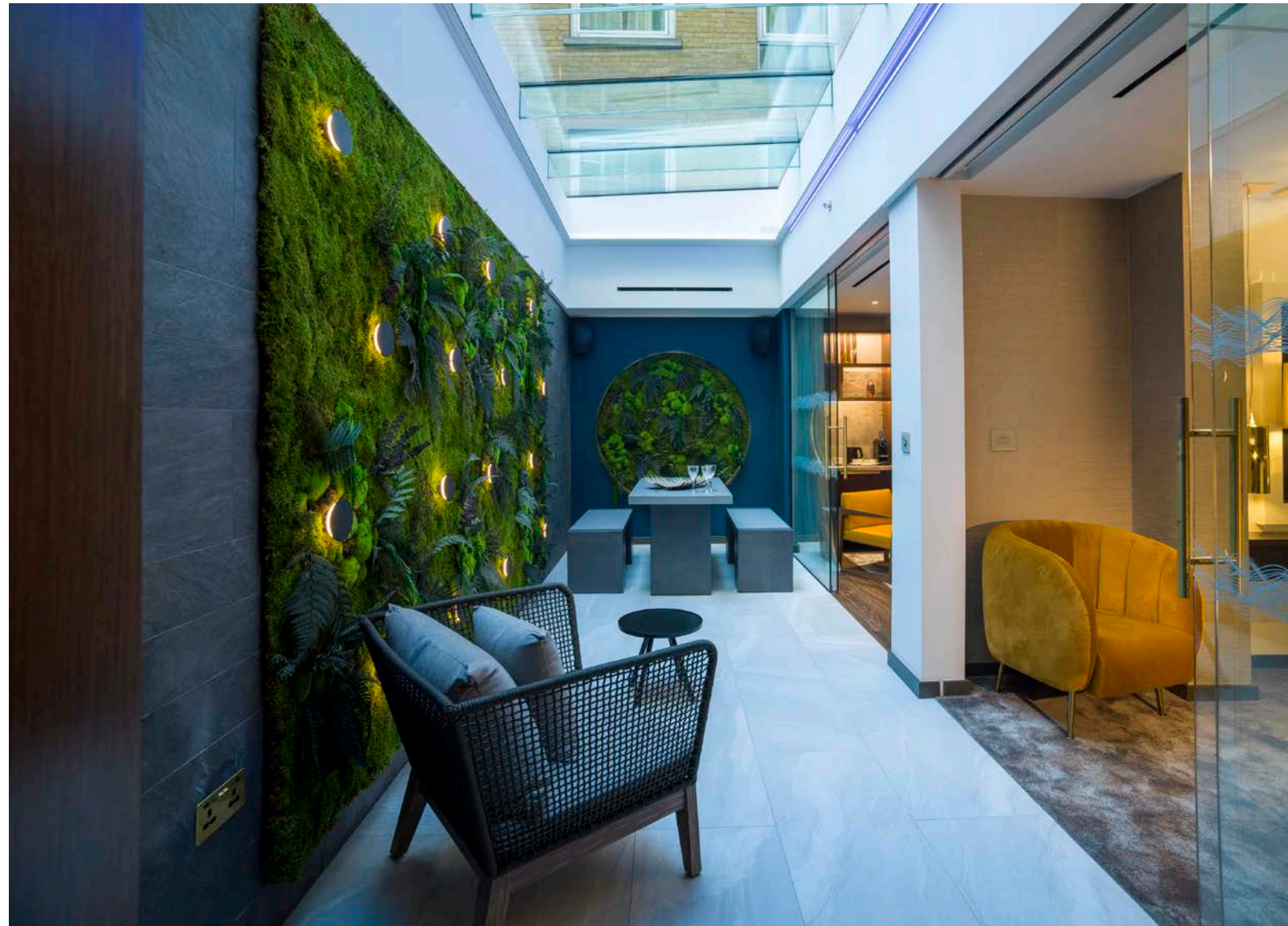
Our suites reflect everything about Middle Eight and take it up a notch. Each is unique in layout and all have their own feel. Carefully curated book collections will give you a clue as to what inspired each suite name...

Enormous beds and spacious seating areas provide the perfect place to escape from the hustle and bustle on our doorstep.

For those looking to keep the city vibe, indoor gardens and outdoor terraces let the natural light flood in and offer a delightful space for entertaining.

If sanctuary is what you desire, close the curtains, switch on the fire and call in for a warm night cap with a movie.

Come be yourself.



TRACKS

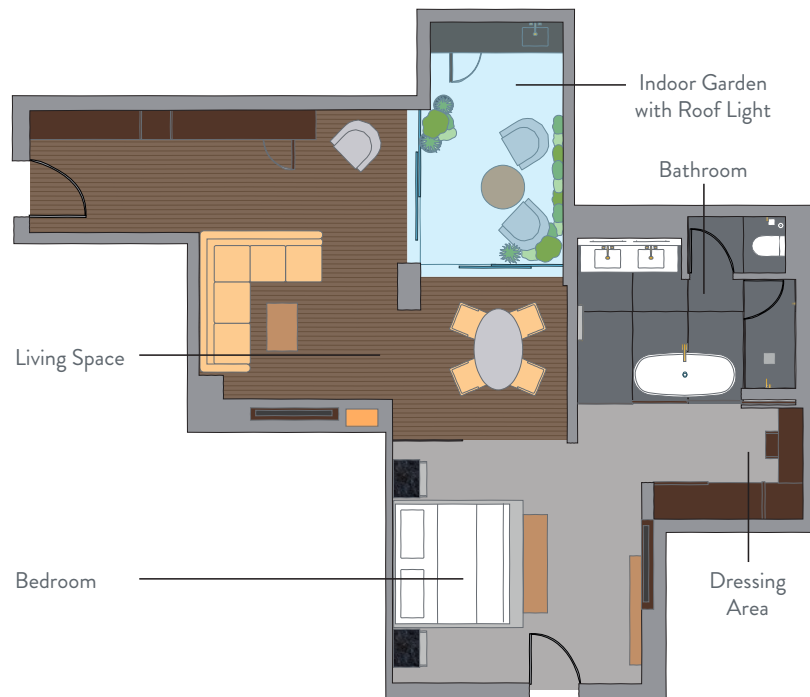
ONE BEDROOM SUITE
WITH INDOOR GARDEN



TRACKS

Contemporary style and a cleverly designed space with a natural flow, Tracks is a one-bedroom suite that draws you in with its open-plan layout. Both the sitting room and the bedroom look onto the bright, airy indoor garden with its unique petrified plant wall. Chill out in the sitting room and curl up with a book in front of the decorative feature fireplace or, with personal service on call, dine in the privacy of your suite. When the day ends, close the partition door between the bedroom and living space and retire to the huge and exceptionally comfortable bed. Tracks is a magical combination of a cosy feel with lots of space.

*Tracks has an open plan layout with a very inviting flow.
Wherever you choose to relax, there's a constant spacious feel.*



SUITE SPECIFICATION

Internal Square m / ft: 85 / 915

Location: First Floor

Indoor Garden Square m / ft: 11 / 118

PROMISE

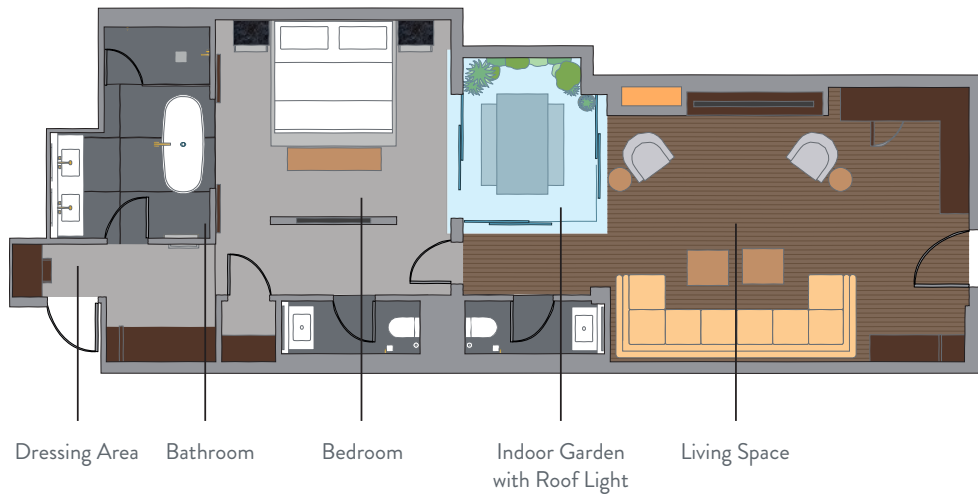
ONE BEDROOM SUITE
WITH INDOOR GARDEN



PROMISE

Relax in the delightfully spacious Promise, a one-bedroom suite with a stunning indoor garden and large entertaining space. Tactile natural materials are paired with modern statement furniture pieces to create a comfortable, stylish and relaxing feel. The bedroom and sitting room are separated by the unique indoor garden complete with a petrified plant wall and a roof light that floods the suite with natural light. Close the doors and draw the curtains so that you can enjoy the home cinema style TV in the living space or listen to your music through the sound system in the bedroom. Wherever you choose to relax, this Promise certainly delivers.

What could be more relaxing than lying back in the free-standing over-sized bath and watching a movie on the bedroom TV?



SUITE SPECIFICATION

Internal Square m / ft: 80 / 862

Location: First Floor

Indoor Garden Square m / ft: 6 / 63



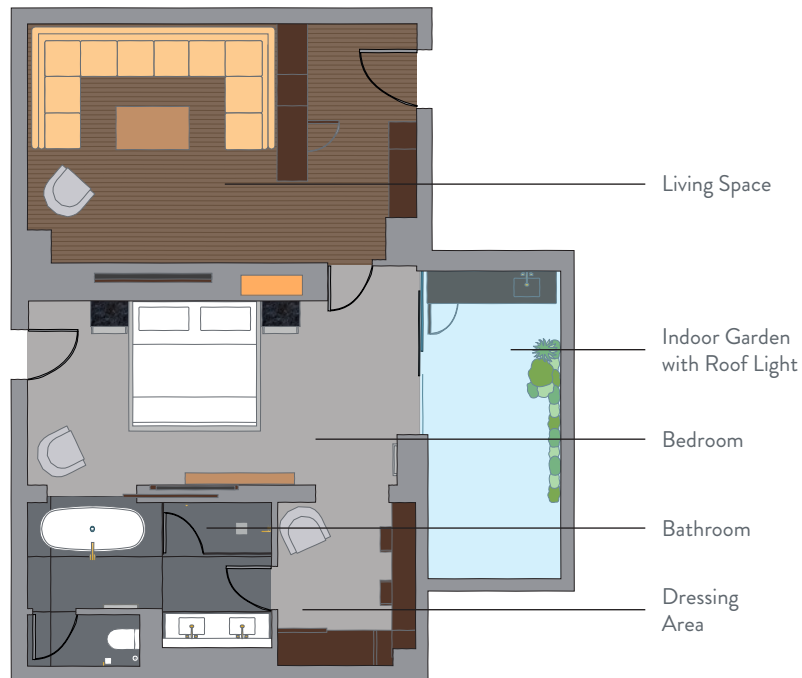
NATURAL

ONE BEDROOM SUITE
WITH INDOOR GARDEN

NATURAL

Full of its own unique character, this one-bedroom suite has a distinct feel and style in all its spaces. The hardwood floor, modern furniture and slick design set the tone as you enter whilst the light carpet, bright colours and contemporary art lend the bedroom a softer feel. Slide open the doors between the bedroom and the indoor garden during the day and let the natural light flood in.

Turn on the stylish fire feature in the living space and you're instantly rewarded with warmth and cosiness.



SUITE SPECIFICATION

Internal Square m / ft: 75 / 809

Indoor Garden Square m / ft: 10 / 108

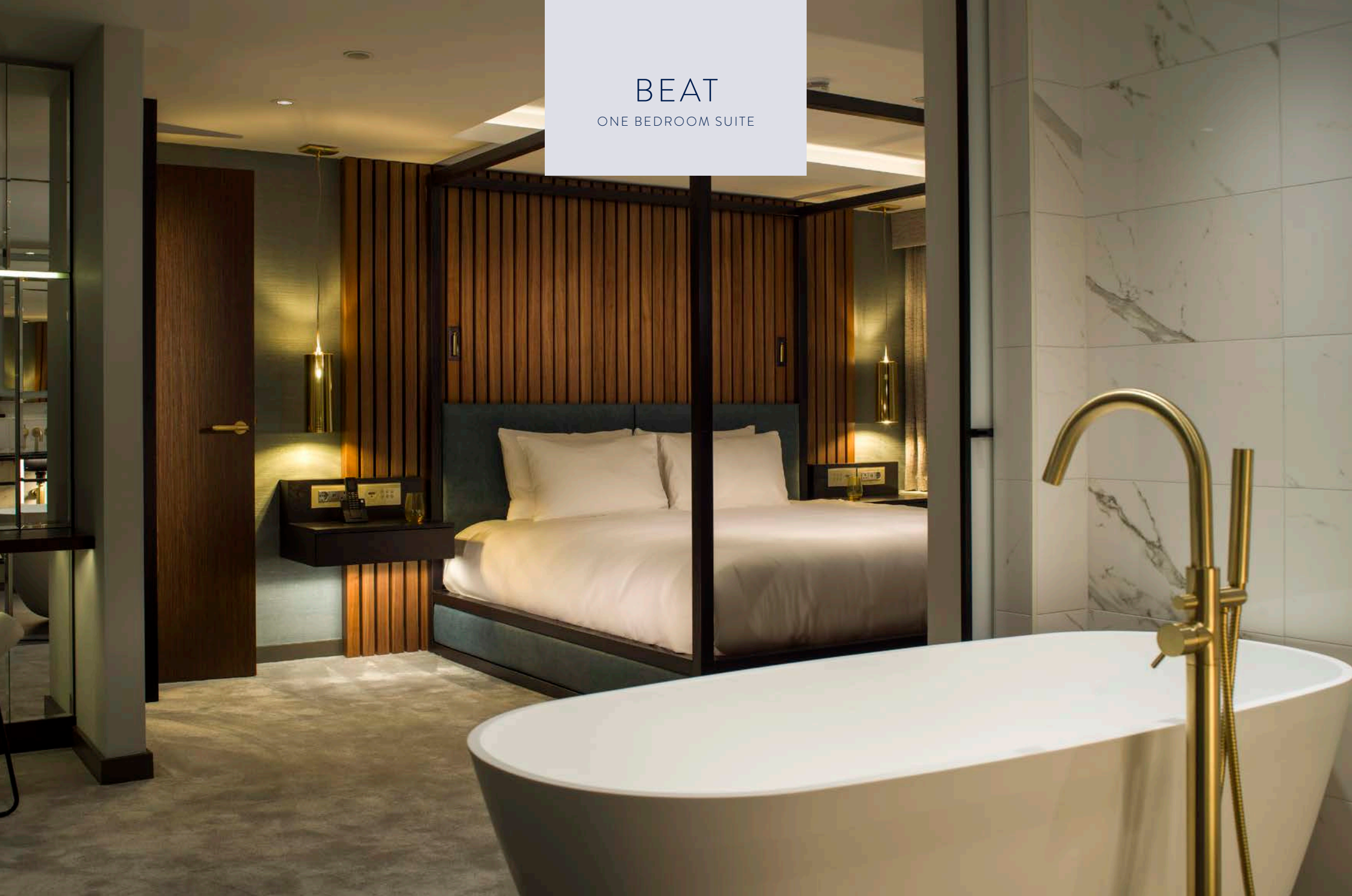
Location: First Floor

Interconnecting with Beat



BEAT

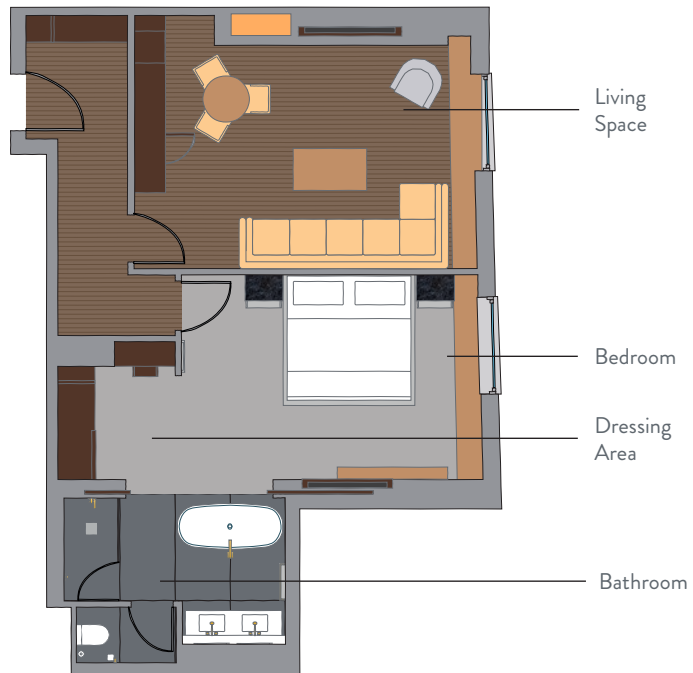
ONE BEDROOM SUITE



BEAT

This one-bedroom suite is all about relaxation. The cosiest of hideaways, Beat's contemporary style exudes warmth and the mix of natural materials and soft fabrics invites you to sit back and unwind. Open the partition doors between the bedroom and the marble bathroom and enjoy the feeling of open space from the comfort of the modern four-poster bed. This suite can be paired with Natural to create an interconnecting family suite.

Need a little more space? Beat and Natural can be combined to create one huge suite, perfect for families.



SUITE SPECIFICATION

Internal Square m / ft: 63 / 680

Location: First Floor
Interconnecting with Natural



RADAR

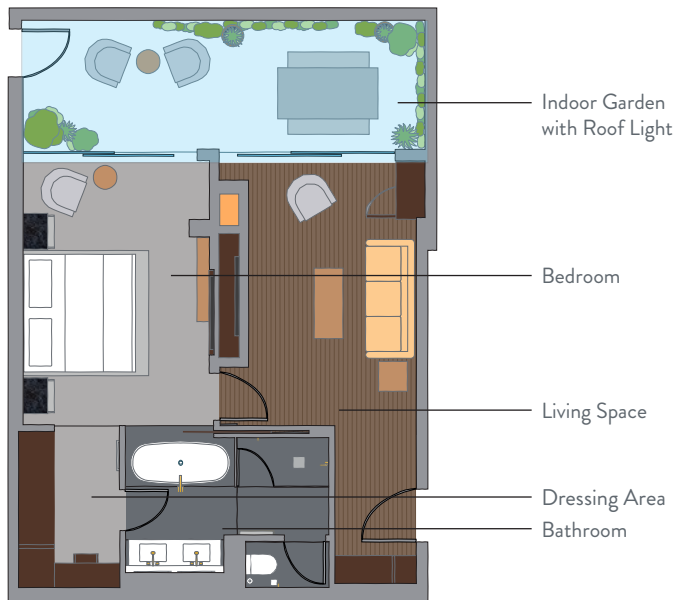
ONE BEDROOM SUITE
WITH INDOOR GARDEN

RADAR

Two rooms with a view. Radar's indoor garden stretches the width of both the bedroom and the sitting room. An abundance of natural light combined with petrified plant walls lends the garden dining area a unique feel. The glass doors allow the spaces to work together as one during the day.

At night, close the shutter on the skylight and adjust the colour of the mood lighting to set your own ambiance.

Beneath the vast skylight in Radar's indoor garden, there is space for both a large dining table and a separate seating area. Plenty of room to entertain guests.



SUITE SPECIFICATION

Internal Square m / ft: 65 / 698
Indoor Garden Square m: 15 / 166

Location: First Floor
Interconnecting with Downtown



DOWNTOWN

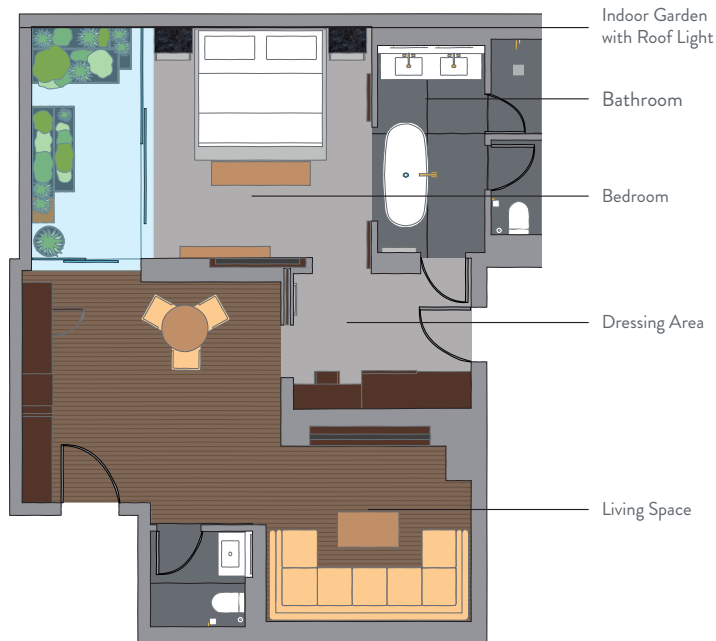
ONE BEDROOM SUITE
WITH INDOOR GARDEN



DOWNTOWN

Downtown, the ultimate contemporary urban sanctuary with space to breathe and all the luxuries you need. This suite has been carefully planned to maximise the feeling of space. Each area flows seamlessly into the next and each has a distinct feel. The indoor garden and connects the sleeping and living areas. The bathroom with its large freestanding bath has partition doors that allow you to choose between open-plan and a little more privacy.

Breakfast at your dining table, catch up on a little work in the indoor garden, afternoon tea on the sofa before a movie and bedtime. There's really no need to leave Downtown.



SUITE SPECIFICATION

Internal Square m / ft: 69 / 740

Indoor Garden Square m / ft: 7 / 74

Location: First Floor

Interconnecting with Radar



BAY

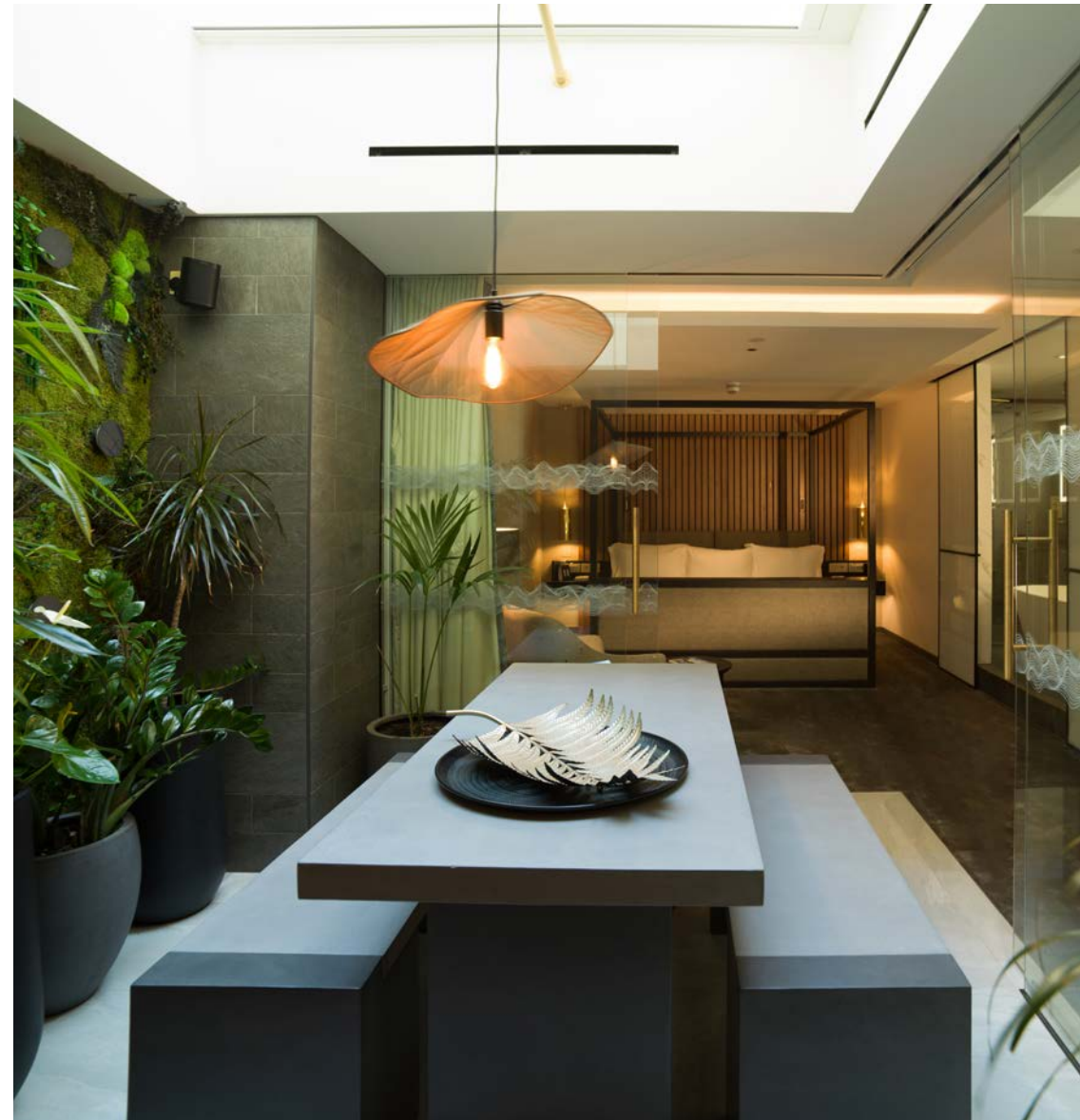
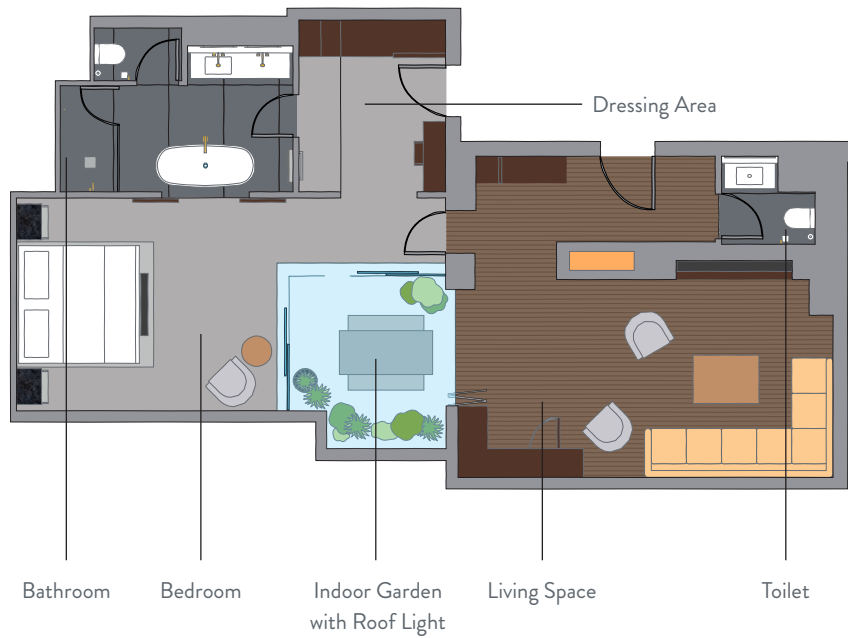
ONE BEDROOM SUITE
WITH INDOOR GARDEN



BAY

One of our larger suites, Bay's clever design accentuates the feeling of space. The comfortable living area with its generous sofa and occasional chairs looks through to the dining area in the indoor garden and onto the bedroom beyond. Draw the curtains and shut the glass doors to divide the space as and when you want to.

The indoor garden is the centrepiece of this suite. It divides the space perfectly allowing the bedroom to flow through into the living area.



SUITE SPECIFICATION

Internal Square m / ft: 79 / 855

Indoor Garden Square m / ft: 6 / 67

Location: First Floor

Interconnecting with Rivers

RIVERS

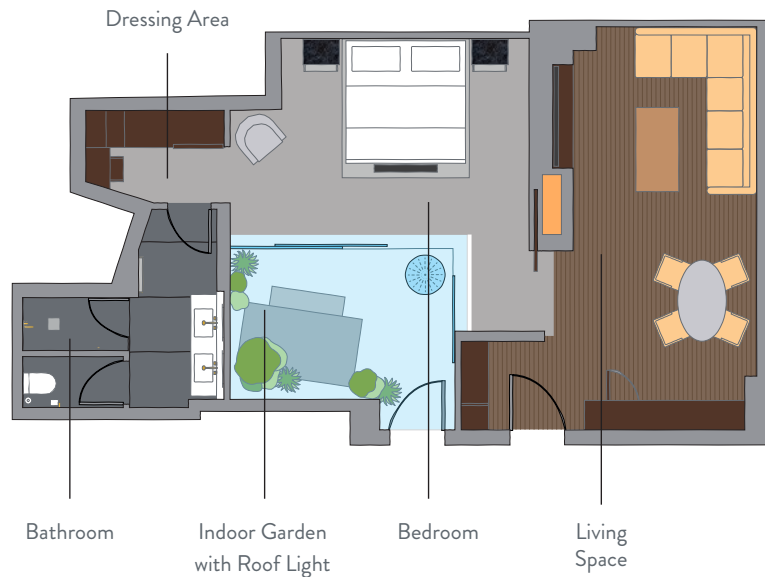
ONE BEDROOM SUITE
WITH INDOOR GARDEN



RIVERS

Rivers uses the signature Middle Eight suites design, pairing rich, dark wood architectural elements with contrasting bright, metallic accents, contemporary furniture and soft fabrics to create an ambiance that's as stylish as it is unique. Revive yourself in the walk-in rain shower, invite guests for drinks in the garden followed by dinner at your private table, or escape to the indulgent luxury of the extremely large bed.

Dinner for two at your own private dining table is hard to beat if you want a night away from the buzz of the city.



SUITE SPECIFICATION

Internal Square m / ft: 65 / 705
Indoor Garden Square m: 5 / 55

Location: First Floor
Interconnecting with Bay



CHANGES

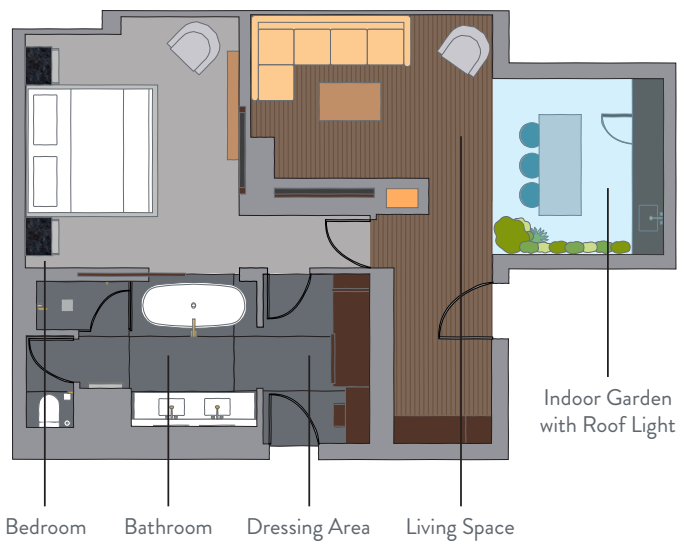
ONE BEDROOM SUITE
WITH INDOOR GARDEN



CHANGES

The perfect suite for those with a penchant for cocktails. Set in this one-bedroom suite's indoor garden is a bar area that's made for entertaining. Your private bar is stocked with all the tools and shakers you need to mix your own cocktails or if you're feeling lazy, order them in from the bar, set the colour of the mood lighting to suit your evening and enjoy. Beyond the bar, Changes offers plenty of space to unwind. Soak in the oversized free-standing bath, play your favourite tunes through the sound system or escape to the sanctuary and comfort of the bedroom and drift off to sleep watching a movie in bed.

Pre-dinner drinks in your indoor garden are a must. Mix your own cocktails from the bar or ring down and they will be brought to you.



SUITE SPECIFICATION

Internal Square m / ft: 60 / 644

Location: First Floor

Indoor Garden Square m / ft: 7 / 73

DRUMS

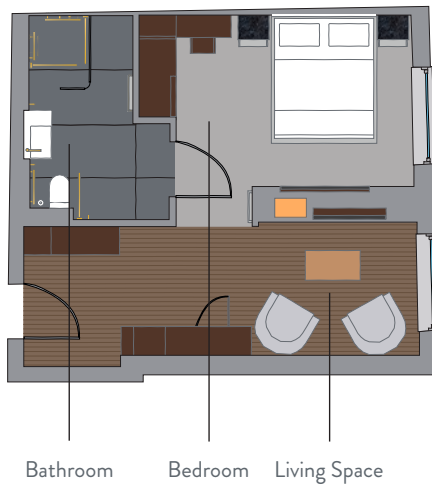
ONE BEDROOM SUITE



DRUMS

The smallest of our suites, Drums is nonetheless perfectly formed. It has all of the touches and design features that make our suites the epitome of luxury. An extra-large TV with soundbar for cinema nights in the living space; an iPad that controls the sound system; a vast and indulgent bed to name but a few. The white marble bathroom is designed with accessibility in mind as this suite is wheelchair friendly.

There are few spaces in our hotel with a more cosy vibe than curled up in front of the TV with the fire on in Drums.



SUITE SPECIFICATION

Internal Square m / ft: 35 / 378

Disability Discrimination Act compliant

Location: First Floor



ROCKS

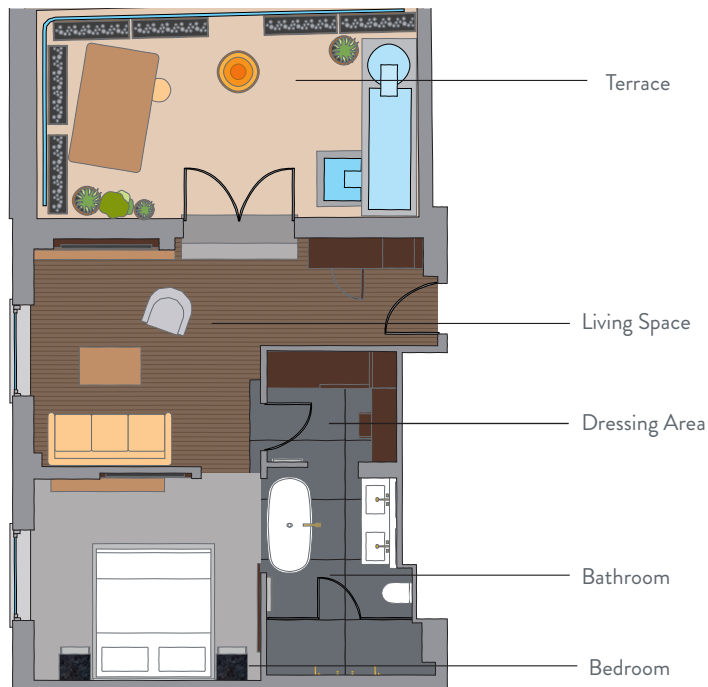
ONE BEDROOM SUITE
WITH OUTDOOR TERRACE



ROCKS

One of two suites to feature outside space, Rocks has its own secluded rooftop terrace. Lounge outside during the day on the comfortable sofa and stretch out the evening hours using the outdoor heater; the terrace adds an extra dimension to this suite. Inside, you'll find a living space with a large sofa, perfect for reclining on with one of the books from the hand-picked collection in your suite.

Rocks has possibly the most prized urban feature. Private outside space. Breakfast in the sun, followed by a cup of tea and a book in the indulgent egg chair.



SUITE SPECIFICATION

Internal Square m / ft: 42 / 450

Location: Fourth Floor

Outdoor Terrace Square m: 21 / 219



A photograph of an outdoor terrace. In the center is a white L-shaped sofa with black metal legs. In front of it is a small black round table with three legs, holding two wine glasses and a small potted plant. To the right is a black metal table with a white top, holding a silver bucket and a glass. The terrace is surrounded by a dense wall of bamboo. A large black arch lamp is visible on the left. The floor is made of light-colored wooden planks.

SUNSET

ONE BEDROOM SUITE
WITH OUTDOOR TERRACE

SUNSET

Sunset is very aptly named. The comfortable, elegant sitting room will impress. Natural materials, soft fabrics and detailed design touches combine to give the feeling of a beautifully crafted space. The spacious bedroom and huge, inviting bed with its cleverly concealed TV will definitely leave their mark.

The pièce de résistance though is the huge terrace. A secluded sun trap set amongst the rooftops, this vast oasis is cleverly designed with distinct areas for entertaining, dining and lounging. The perfect spot to enjoy a sundowner or two.

*Stay in Sunset and you'll want to entertain on your terrace.
With space for eight for dinner, there is room to extend the invitation.*



SUITE SPECIFICATION

Internal m² / sq.ft: 52 / 558

Location: Sixth Floor

Outdoor Terrace m² / sq.ft: 39 / 423



66 Great Queen Street, London WC2B 5BX
T: +44 (0) 20 7309 9300
hello@middleeight.com

middleeight.com



L.V.X.[™]



Preferred

HOTELS & RESORTS