



The Summerskill Residence

TWO-BEDROOM

This fifth-floor residence centres around a large open plan living area, a dining area and a fully fitted kitchen which lends the entire space a grand and airy feel. The piece-de-resistance, however, is the enormous, landscaped terrace that extends seamlessly beyond the sitting area. At nearly 65sq m, it is large enough to have a dining area for four, with plenty of space left for occasional seating. Located on the opposite side to Buckingham Gate, the terrace is quiet and the perfect rooftop escape.

The master bedroom which has views over Buckingham Gate has an en-suite bathroom whilst the guest bedroom has an adjoining bathroom with walk-in shower.



Kitchen



Outdoor Terrace



Valet



Chef



Walk In Shower



Underfloor Heating



Two Bedrooms

Residence Location & Specification

Internal

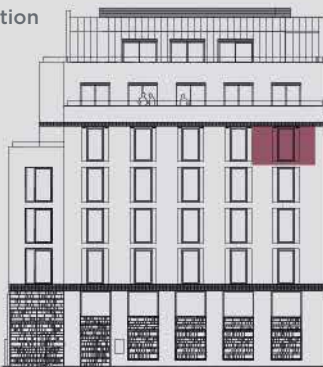
92.4m²

Terrace

65m²

Location

5th Floor



Terrace Open Plan Living with Dining Space Guest Bedroom Guest Bathroom En-suite Bathroom Master Bedroom

