



The Guardsman

BUCKINGHAM GATE

At home at The Guardsman

The Residences

L.V.X.SM

Preferred
HOTELS & RESORTS



The Guardsman Residences CITY LIVING, REDEFINED

Our address is one of the most sought-after locations in London. An address that could be yours in one of our six self-contained, beautifully appointed residences.





The Astor Residence

THREE-BEDROOM PENTHOUSE

Encompassing the entire top floor of The Guardsman, The Astor Residence combines effortless contemporary design with the greatest inner-city luxury of them all. Space. The vast living area is separated into a dining and sitting area. A private terrace that wraps around the residence offers spectacular views.

There are two beautifully appointed bedrooms and a study which can be converted into a third bedroom if needed. The master bedroom has an en-suite and the key treat in the guest bathroom is a Japanese soaking tub. A kitchen adjoins the dining area should you wish to cook or be cooked for. Ring down and book one of our private chefs to cook dinner for you and your guests. We can pick you up from any London Airport, a valet can be on hand to unpack your belongings and stock the kitchen should you require.



Kitchen



Outdoor Terrace



Valet



Chef



Walk In Shower



Bath Tub



Underfloor Heating



Three Bedrooms

Residence Location & Specification



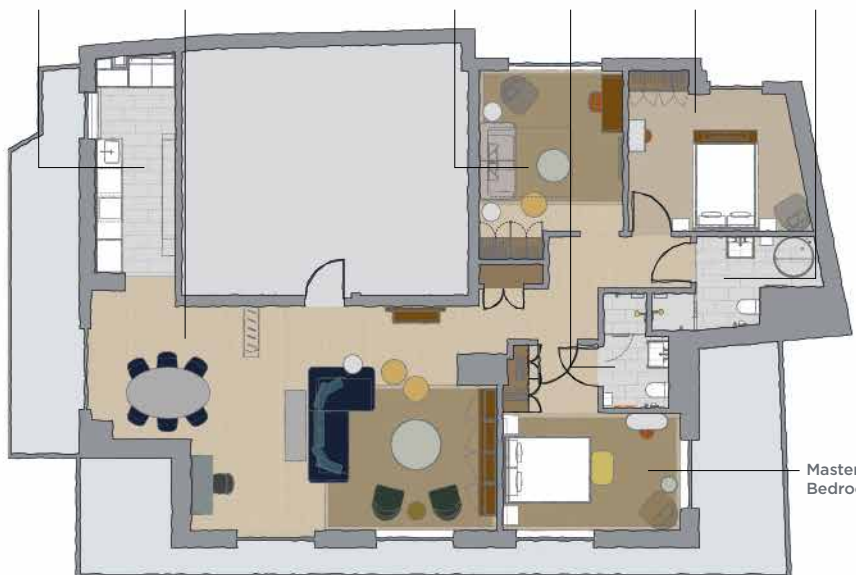
Internal
117.3m²

Terrace
38m²

Location
7th Floor

Floorplan (not to scale)

Kitchen Open Plan Living with Dining Space Study/Bedroom En-suite Bathroom Guest Bedroom Bathroom



Master Bedroom





The Wintringham Residence

TWO-BEDROOM

Sharing the sixth floor with The Bondfield Residence, the Wintringham is a spacious two-bedroom apartment. The residence is cleverly divided with the bedrooms at one end and the living space and kitchen area at the other. The master bedroom is en-suite with a walk-in shower and the guest bedroom has an adjacent bathroom with a walk-in shower.

The fully fitted kitchen complete with bar seating area flows through to the open plan dining and sitting areas with enough space to entertain four people in comfort. Floor-to-ceiling windows with views over Buckingham Gate allow natural light to flood in and lend a light, breezy feel to the residence and balcony.



Kitchen



Outdoor Terrace



Valet



Chef



Walk In Shower



Underfloor Heating



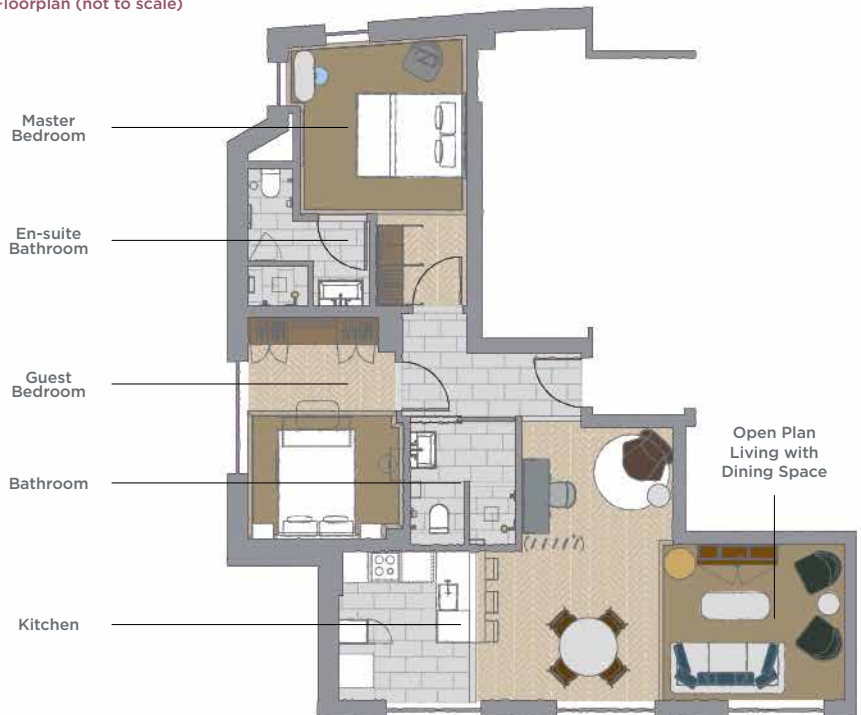
Two Bedrooms

Residence Location & Specification



Internal	Terrace	Location
75.6m ²	10m ²	6th Floor

Floorplan (not to scale)





A photograph of a hotel room. In the foreground, a bed with a white sheet and a dark leather headboard is visible. To the right, a green upholstered armchair sits next to a small round table with a vase of flowers. A floor lamp with a white shade stands behind the chair. A large window with gold and grey curtains is in the background, showing a view of a building. The room has a warm, yellowish light.

Hotel style and convenience
HOME COMFORTS

Our residences offer something beyond the normal hotel experience. More than just a suite, a home. Space to relax, however long you need to stay.

All residences are serviced twice daily, have access to a private chef (on request), valet, packing service and concierge as well as 24-hour room service.



The Bondfield Residence

TWO-BEDROOM

This two-bedroom residence will be the envy of any friends you choose to entertain. Invite your guests to join you in the generous living area which combines a sitting area complete with large flat-screen HDTV, a dining area and a fully fitted kitchen. The floor-to-ceiling doors lead out to a quiet and secluded landscaped terrace perfect for long summer dinners.

The spacious and beautifully appointed master bedroom has views over Buckingham Gate through its floor-to-ceiling windows. The en-suite bathroom is a sanctuary you'll want to retreat to complete with roll-top bath. The guest bedroom is not left to play second fiddle. It also features floor-to-ceiling windows with the same view as well as an en-suite bathroom with walk-in shower.



Kitchen



Outdoor Terrace



Valet



Chef



Walk In Shower



Bath Tub



Underfloor Heating

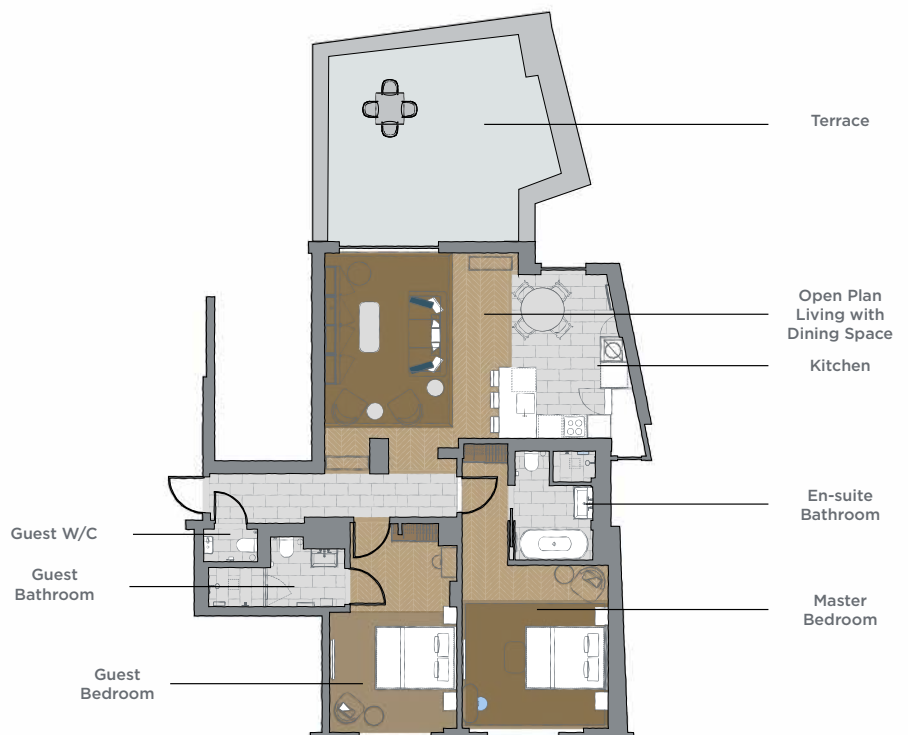


Two Bedrooms

Residence Location & Specification



Internal	Terrace	Location
99m ²	34m ²	6th Floor





The Summerskill Residence

TWO-BEDROOM

This fifth-floor residence centres around a large open plan living area, a dining area and a fully fitted kitchen which lends the entire space a grand and airy feel. The piece-de-resistance, however, is the enormous, landscaped terrace that extends seamlessly beyond the sitting area. At nearly 65sq m, it is large enough to have a dining area for four, with plenty of space left for occasional seating. Located on the opposite side to Buckingham Gate, the terrace is quiet and the perfect rooftop escape.

The master bedroom which has views over Buckingham Gate has an en-suite bathroom whilst the guest bedroom has an adjoining bathroom with walk-in shower.



Kitchen



Outdoor Terrace



Valet



Chef



Walk In Shower



Underfloor Heating



Two Bedrooms

Residence Location & Specification

Internal

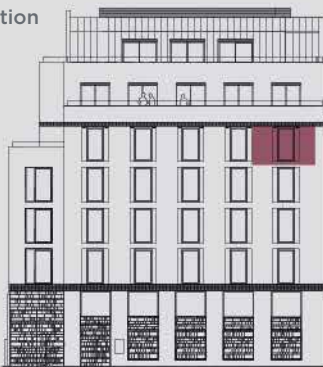
92.4m²

Terrace

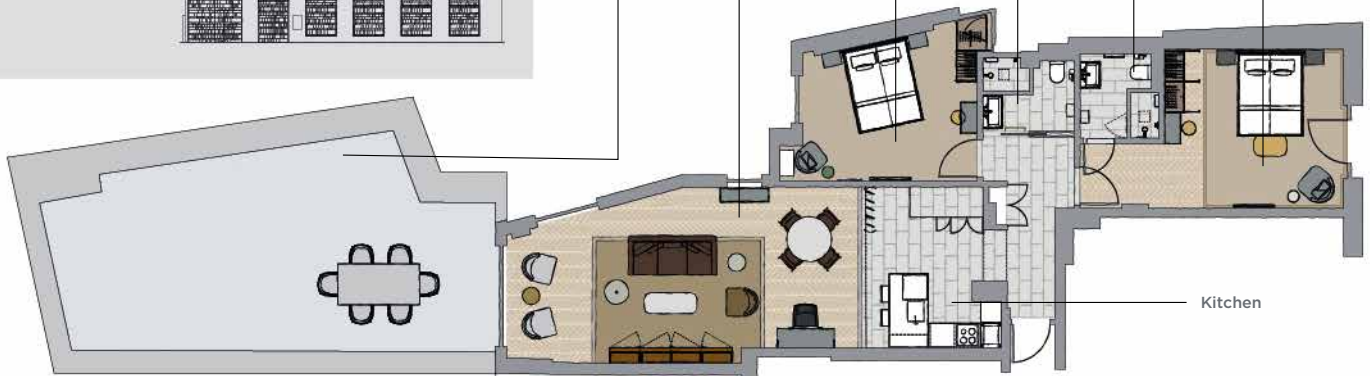
65m²

Location

5th Floor



Terrace Open Plan Living with Dining Space Guest Bedroom Guest Bathroom En-suite Bathroom Master Bedroom





An ever changing freshly prepared menu

A DINING ROOM JUST FOR GUESTS

The emphasis in the dining room is on a menu that changes frequently. Fresh, seasonal produce dictates what our head chef prepares.





The Horsbrugh Residence

TWO-BEDROOM

The Horsbrugh Residence is a two-bedroom pied-à-terre perfect for those wanting something a little more special. The main living space features an open-plan kitchenette with breakfast bar along with a comfortable seating area. Both bedrooms have an en-suite bathroom with walk-in showers.

The style and design reflect the feel present throughout The Guardsman with contemporary, bespoke furniture mixing with classic touches like chevron parquet floors and wood panelling to create an unmistakably British ambiance.



Valet



Walk In Shower



Underfloor Heating



Two Bedrooms

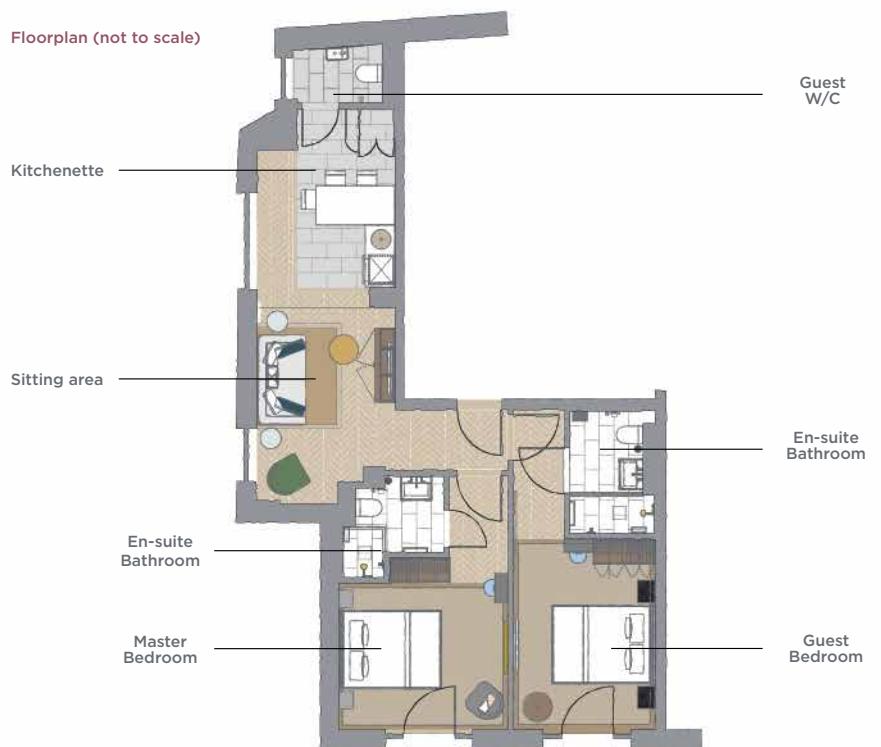
Residence Location & Specification



Internal
47m²

Location
5th Floor

Floorplan (not to scale)





The Copeland Residence

ONE-BEDROOM

This spacious, open-plan residence has one en-suite bedroom. The generous living area combines everything our larger residences have to offer in one flowing open space. The living area encompasses a kitchenette, marble dining table and a comfortable sofa. Floor-to-ceiling windows with Juliet balconies in both the living room and bedroom complete the light, modern, uncluttered feel.

Bespoke furniture, Designer's Guild fabrics and Guardsman trademark features like parquet flooring make this residence perfect for those wanting a little more space for a longer stay. This residence is also fully wheelchair accessible.



Valet



Walk In Shower



Underfloor Heating

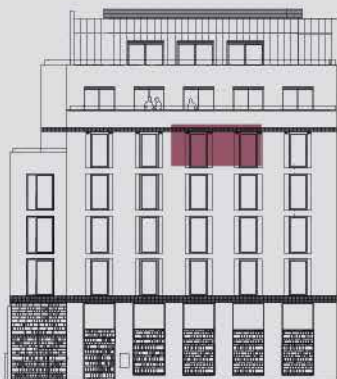


One Bedroom



Accessible

Residence Location & Specification



Internal 40m² Location 5th Floor

Floorplan (not to scale)





Our Neighbourhood

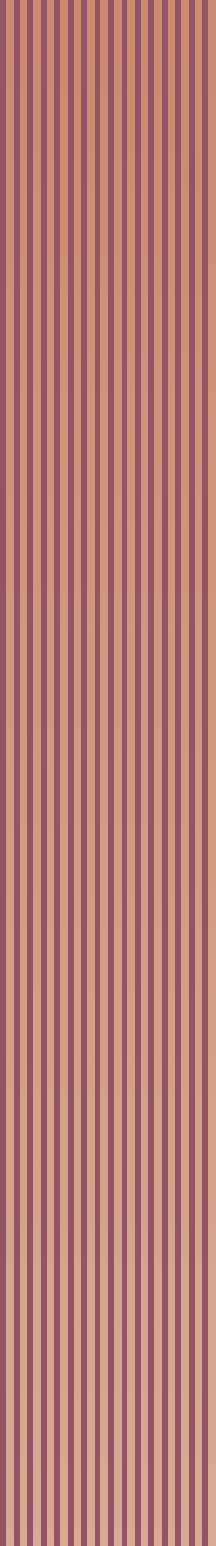
ONE OF LONDON'S MOST HISTORIC QUARTERS

On our doorstep, you'll find one of London's most iconic neighbourhoods. Famous palaces and parks are all a short walk away.

Stroll to Tate Britain through residential streets, mingle with politicians in the coffee shops around Westminster or hop on the tube to discover everything that London has to offer from this most central of locations.







1 Vandon Street, London SW1H 0AH
T: 0207 309 9200
reservations@guardsmanhotel.com

info@guardsmanhotel.com
guardsmanhotel.com



L.V.X.[™]



Preferred
HOTELS & RESORTS

Preferred
RESIDENCES

