

classic
interiors

InHouse Kitchen Collection

Luxury Kitchens & Interiors

www.classicinteriors.co.uk

Lifestyle & design



Never before has there been more opportunity to create the ultimate kitchen, based on your lifestyle. You can devise a space that directly reflects your personality and the way you choose to live your life. Whether you possess a flair for the dramatic, prefer a serene oasis or want to steep yourself in traditional comfort, your own 'personal' kitchen can be realised.

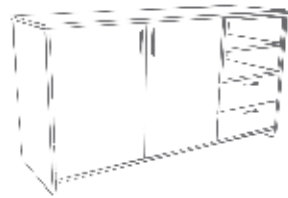
Not to be underestimated, the design of your new kitchen is one of the most important decisions you can make. A fusion of cabinet and appliance layout, feature accessories, colour combinations and a selection of finishes/textures, the design choices you implement will affect how you enjoy your kitchen for many years to come.

Beyond the kitchen

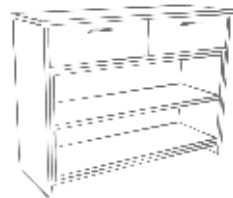
Open plan living spaces are becoming ever more popular, for the sociable, warm and open atmosphere they encourage and their multi-functional nature. Creating a fluid space which binds both rooms and people together, the kitchen becomes the focal point in the home and is the key area in the house that people are drawn to.

Our 'Beyond the Kitchen' concept allows ease of continuity between various living zones with the introduction of complementary furniture pieces such as media units, sideboards, coffee and side tables. We hope that you find plenty of inspiration throughout the brochure to help you make the perfect choice for your home and lifestyle.

COMPLEMENTARY FURNITURE



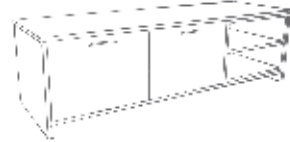
SIDEBOARDS



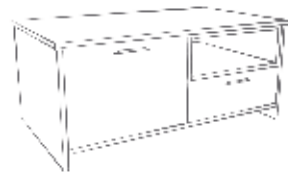
CONSOLE TABLES



SIDE TABLES



MEDIA UNITS



COFFEE TABLES



Beyond the kitchen

Traditionally the home was divided up into separate rooms, all of which had their own function. With an increase in people working from home, the home office has become an essential haven, creating the perfect working environment.

Throughout the brochure you will find fabulous examples of pantries, bootrooms and home offices. All of which combine clever functionality along with stunning creative design.

Think outside the box - think 'Beyond the Kitchen'.



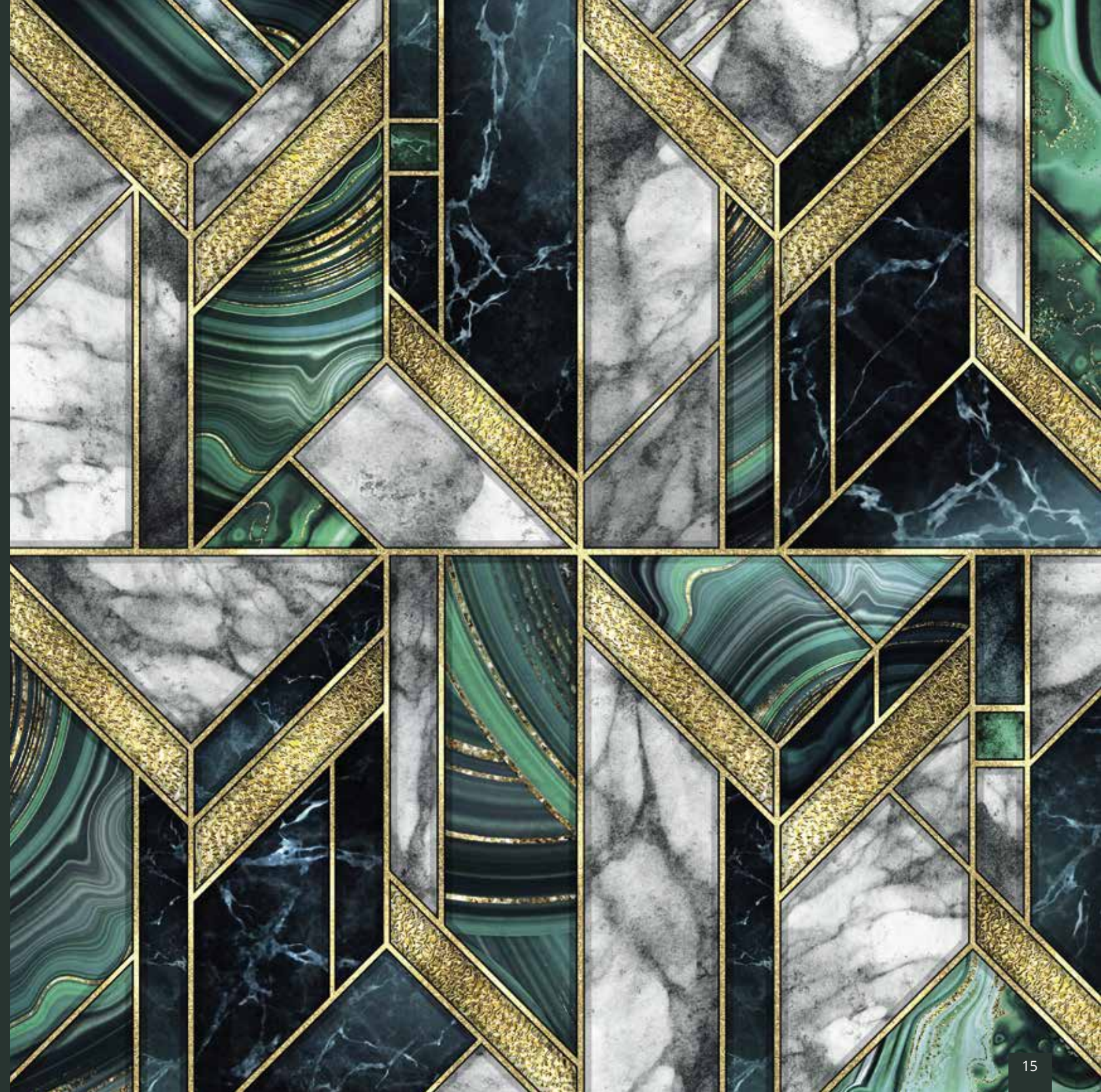
Quality Ingrained

Quality excellence should be an integral aspect of any furniture you choose to purchase and something you simply expect, regardless of budget. Whether it is the construction, finish or design detail of our ranges you can be sure that high quality is our top priority. With this in mind you are free to concentrate on the look and feel of your new kitchen, confident that the quality is ingrained.



Timeless Elegance

Belonging to an era that time forgot, Timeless Elegance represents enduring sophistication and luxury with beautifully crafted kitchen furniture that will last and last. Interspersed with ornate detailing and grand features, this classic collection brings traditional elements to the fore resulting in a stylish yet comfortable kitchen space that feels like it has always been there.



SETTING THE SCENE

Add authenticity to your timeless environment with the use of subtle textures and finishes that bring out the elegant nature of your kitchen furniture. Sumptuous materials such as velvet for upholstery, marble for worktops and timber for components such as internal shelving will create a feeling of abiding comfort. Don't be afraid to inject an ornate flavour into your design by including elements such as brass handles and modern style lighting, as this will only enhance the look and feel!



BELGRAVIA

The epitome of true elegance, Belgravia brings both style and substance to your home with its ornately detailed inframe design and numerous accessories. Featuring a superb quality painted finish with visible woodgrain you can create a timeless masterpiece within your home.



- 1 Belgravia painted Deep Forest with large island which dominates the room and creates a distinctive zone between cooking and living. Worktop is Neolith Mar Del Plata.
- 2 Glass panelling cleverly floods the tall integrated larders with natural light.

Handles: K1-270 & K1-267 (See page 214).



2



1



2



3

- 1 A stunning island adorned with framed end panels.
- 2 This magnificent media wall unit is certainly a statement piece and perfectly complements the kitchen.
- 3 Elegant tall larders create an architectural feature as well as providing ample storage in this beautiful home.



2



1

- 1 Belgravia kitchen painted Slate Blue and Porcelain. Worktop is Vienna Quartz.
- 2 Detail showing four door larder and rounded mantle shelf.
- 3 Four door larder displaying internal coffee station with open shelving and storage drawer.

Handle: K1-191 (See page 217).



3



- 1 Quadrant barrel unit with solid oak inset trays and circular timber top.
- 2 Dresser internal featuring glass holder and bottle rack.
- 3 Dresser unit showing curved and straight cornice features and plain frames.





1



4



5



2



3



- 1 Belgravia kitchen painted Parisian Blue and Stone. Worktop is Calacatta Porcelain.
- 2 Tall larder unit featuring top boxes, under cornice and moulded cornice.
- 3 Central island showing integrated solid oak trays and chopping boards.
- 4 Island with curved doors and moulded skirting plinth. Open wall display unit with curved doors.
- 5 Curved base door with moulded skirting plinth.

Handles: K1-192 and K1-194 (See page 217).

ALDANA

The stunning simplicity of the Aldana shaker-style door is accentuated by its narrow frame for a decidedly modern look. This door is accompanied by a host of accessories that will expand your design options to create a kitchen that meets all your expectations.

- 1 Aldana kitchen painted Porcelain and Cashmere. Island features a large breakfast bar with open shelves in Light Oak. Worktop is Silestone Lusso.
- 2 Island extends into the living space which incorporates an Aldana sideboard and media unit.

Handle: K1-278 (See page 215).





- 1 Coordinating media unit in Cashmere and Light Oak enables a cohesive muted colour scheme.
- 2 This simplistic sideboard design provides extra storage wherever you need it.



- 1 Aldana kitchen painted Marine and Stone. Worktops are Dekton Valterra Ultra Compact (island) and Dekton XGloss Tundra Ultra Compact (base units and dresser). Also shows beautiful end panels on the wall and base, created with pilasters and feature plinth.
- 2 Dresser displaying Georgian frames with horizontal bars and acute angled cornice.

Handles: K1-195 and K1-198 (see page 217).



- 1 Walk in Pantry featuring base units and open shelves painted Stone.
- 2 Solid oak dovetail drawer with cutlery insert.
- 3 A welcoming entrance with cloak and bootroom featuring seating and storage.



1



2



3



HARBORNE

Combining the linear detailing of a handleless door with a subtle shaker frame, Harborne captures the true essence of traditional styling with a contemporary twist. Be as adventurous or as serene as you like with our multitude of amazing colours, you can create an environment that reflects your personality and lifestyle.



- 1 Harborne painted Slate Blue, Stone and Citrus Green (using our Colour Match Service, see page 209.) Integrated seating with pullout storage drawers and double larders on either side. Worktop is Dekton Nayla.
- 2 A chunky open shelf provides a practical and decorative feature to perfectly link the tall housing units on either side of the hob.





1



2



3



- 1 A perfect example of how complementary furniture can enhance an open plan living space.
- 2 Compact but beautiful freestanding and wall hung media combination, enhances the living space visually and practically.
- 3 Contemporary sideboard accentuated by a dark but soft Slate Blue, the perfect partner for it's brass legs.



- 1 Harborne painted Shell and Stone is used to create this contemporary living space inspired by Scandinavian design with the simplistic tonal trends that come along with it. Worktop is Neolith Blanco Carrara.
- 2 The living area is furnished with a Harborne sideboard and media unit painted Porcelain. The media unit incorporates a Light Oak open shelf which reflects the wall units in the kitchen.
- 3 The alcove features a fitted open shelf that sits perfectly above the freestanding console table painted Stone with a Light Oak shelf.





DAWSON

Dawson's slim frame, sloped internal profile and v-groove detailing offers a unique design that can adapt to suit both contemporary and traditional styling. Featured here using mock inframe, glazed doors and open shelves to create lots of detail and interesting focal points. Dawson is available in six stunning colours that will easily bring your dream kitchen to life.



- 1 Dawson Indigo kitchen featuring a long window seat with storage, spice rack fronted extractor unit and open shelves with stainless steel rail details. Units are framed with universal moulding to create a traditional inframe look. Worktop is Dekton Bergen.

Handle: K1-259 (See page 214).





- 1 Glazed dresser unit with open shelves.
- 2 Dawson utility features a raised washing machine with handy pullout shelf below. Other features include tall broom cupboards, laundry rail and wall unit with open shelves and stainless steel rail.





1



2



3



4

- 1 Dawson Kitchen in Light Grey is complemented with a Solid Oak timber worktop and open shelves.
 - 2 The island features wide pan drawers, an open shelf in Light Oak and the worktop is Silestone Et Statuario.
 - 3 Tall larder units with single glazed feature doors.
 - 4 Wide sideboard with open shelves in Light Oak.
- Handles: K1-272 & K1-269
(See page 214).

CLONMEL

Characterised by its wide frame and deep profile, this chunky shaker-style door makes a robust statement with its formidable appearance. Whether you choose to have your kitchen painted, stained, or both, Clonmel is truly timeless and is enhanced by the inclusion of its many exclusive accessories.



- 1 Clonmel kitchen painted Light Grey and stained Carbon. Worktop is Dekton XGloss Natura 18 Ultra Compact. Also shows island with open shelving detail and tall oven housing.
- 2 Freestanding dresser including plain frames complete with Flemish glass.

Handles: K1-214 and K1-208 (See page 220).

GEORGIA

Offering a huge number of options when it comes to colour, the Georgia kitchen, featuring a shaker-style door with smooth painted finish, is ideal for those who like to experiment! Include some feature components such as curved doors, a plate rack or classic overmantle to create the ultimate kitchen space.



2

- 1 Georgia kitchen painted Stone and Porcelain. Worktop is Marble Carrara. Also shows open wall unit with plate rack, worktop dresser with plain glazed frames and feature overmantle.
- 2 Unique island design incorporating curved doors, plain glazed frames, chunky pilasters and under plinth.

Handles: K1-156 and K1-159 (See pages 218).



1



JEFFERSON

The quintessentially traditional design of the Jefferson door, with its raised centre panel and defined grain painted finish, exudes charm and sophistication. Choose from an extensive selection of both standard and made to order accessories to devise a kitchen that is totally unique and special.



- 1 Jefferson kitchen painted Light Grey and Gun Metal Grey. Worktop is Honed Marble.
- 2 Pastry bench with solid oak worktop and slatted shelf.
- 3 Worktop dresser featuring Edwardian carved frames.

Handle: K1-168 (See pages 214).

KENSINGTON

The innovative Kensington design with sloped internal profile and prominent v-grooves offers a contemporary twist on the original shaker style. Available in numerous colours, the visible grain on this versatile door provides a look of true authenticity.

- 1 Kensington Porcelain featuring tall larder units and central island. Worktop is Silestone Snowy Ibiza.
- 2 Stylish freestanding sideboard in the dining area with brushed chrome legs.

Handle: K1-279 (See page 215).





1 Kensington kitchen in Light Grey. Worktop is Bardiglio Nuvolato Marble. Also shows island with open shelving and back run incorporating tall plain glazed frames.
Handles: K1-157 and K1-160 (See page 220).



1 Kensington kitchen in Dust Grey. Worktop is Bianco Carrara Marble. Also shows window bench seating, slim mantle shelf design and modern square cornice.

Handle: K1-180 (See page 218).



1



MADISON

The layout of this Madison kitchen is designed for modern living. The warmth of rich Light Oak and Ivory evokes an inviting feeling and special designer features such as open shelving offer an abundance of storage space.

- 1 Madison kitchen in Light Oak and painted Ivory featuring a working overmantle and open shelves in Light Oak to complement the elegant island. Worktops are Silestone Et Calacatta Gold. Chunky pilasters, moulded skirting plinth and traditional cornice combine to add opulence to this classic kitchen.
- 2 This magnificent dresser/media unit is the perfect solution to complete this traditionally styled, open plan living space.

Handles: K1-222 and K1-224 (See page 219).





- 1 Madison kitchen painted Cashmere and Graphite. Worktop is Silestone White Storm Quartz. Also shows tall unit with glazed top boxes. Island with feature door end panel, moulded skirting plinth and solid oak inset trays with chopping boards.
- 2 Simple flat canopy design flanked by double panel feature doors.

Handles: K1-156 and K1-159 (See page 218).

WAKEFIELD

The internal bead profile used in the Wakefield door adds extra depth and contour to your overall kitchen design when combined with any of the broad number of accessories on offer in this stunning range. Take advantage of the extensive painted colour palette which allows you to mix and match with total freedom.

- 1 Wakefield kitchen painted Mussel and Parisian Blue. Worktop on back run is Silestone Blanco Maple Quartz and solid oak on island. Also shows simple overmantle design and island with feature door end panel.
- 2 Dresser with Georgian frames and oak open shelving.

Handles: K1-169 and K1-172 (See pages 217 & 218).



Country Chic

With a varied selection of warm furnishings and punchy painted finishes, Country Chic offers a taste of the traditional with an edge. Retaining all the rudimentary design elements of the much loved rural kitchen, our Country Chic collection adds a contemporary twist with the inclusion of daring colour combinations and unique accessories. Revel in this fresh new look at a time-honoured favourite.



SETTING THE SCENE

Many people aspire to owning a home in the countryside. This may only be a fantasy for some, but it is possible to experience a taste of the country no matter where you live. Introduce a rustic feel to your home with the inclusion of popular country favourites like T&G panelling, visible ceiling beams and natural materials such as timber, slate or stone. Add a chic touch with contemporary accents like vibrant colour mixes and innovative cabinet configurations and live the ultimate rural dream.





DAWSON

Dawson lends itself well to this rustic shabby chic decor. Details such as the sloped internal profile, v-groove and smooth finish contrast perfectly with this eclectic mix of rough timber and wall finishes. A traditional pantry designed with open shelves and wicker baskets, adds a practical as well as decorative element to this cosy family home.

- 1 Dawson Kitchen in Porcelain and Cashmere featuring open shelves and walk in pantry with wicker baskets. Worktops are Consentino Colonial White and Solid Oak Timber.
 2 The dining area features a sideboard in Cashmere to perfectly complement the kitchen.

Handles: K1-256 and K1-258 (See page 219).



2



- 1 A wide sideboard in Cashmere offers ample storage in the dining area and complements the kitchen perfectly.
- 2 Walk-in pantry featuring open shelves and pullout wicker baskets.



KENSINGTON

Show your country fun side with a Kensington shaker style kitchen incorporating door and accessory combinations suitable for any size of space. The door's sloped inner profile, v-groove and grain finish means it is perfect for a busy family lifestyle.



- 1 A spacious Kensington kitchen in Indigo featuring open shelves with plate rack and large island with breakfast bar. Worktops are Dekton Aura15.
- 2 Tall cabinets with integrated fridge and freezer.

Handles: K1-255 and K1-257 (See page 214).



2

1



- 1 Traditional walk-in pantry featuring open shelves with decorative brackets.
- 2 Cosy dining area makes the perfect space for family living and entertaining friends.



- 1 Kensington in Cashmere creates a warm cosy feel to this compact kitchen which opens up onto the patio for outside dining. Worktop is solid oak timber.
- 2 A tall dresser unit creates the perfect larder. Extra storage is provided with decorative open shelves.

Handle: K1-259 (See page 214).



2



1



- 1 Adding an underplinth below the doors, enhances the overall streamlined design of this shaker range.
- 2 A beautiful console table complements the kitchen providing decorative and practical storage.

Handle: K1-259 (See page 214).

ALDANA

A kitchen that ideally lends itself to a rustic look, Aldana's slim frame accommodates the hallmarks of country living perfectly. Whether you choose a more traditional approach with T&G panelling, earthy colours and pastoral style accessories or decide to go a more modern route with dynamic colour combinations and designer styling, your country kitchen will evoke that comforting, lived in feel.

- 1 Use T&G panelling to great effect by bringing it through to spaces that extend off your kitchen. Shown here is an entrance way featuring bench seating and T&G panels.
- 2 Aldana kitchen painted Viridian. Worktop is Dekton Entzo Ultra Compact. Also shows use of universal pilaster to create a 'framed' look and plain glazed frames on worktop dressers and on top of far larder unit.

Handle: K1-210 (See page 221).



1



2



- 1 Island with solid oak inset chopping boards.
- 2 Designer canopy with oversized, shaped corbels sits majestically above the central island that boasts convenient open shelving.



1



2



- 1 Show your fun side with this Aldana kitchen painted pale yellow (using our Colour Match Service, see page 209) and Dust Grey with Brilliant White mock inframe. Worktops are Dekton Valterra Ultra Compact (back run) and Silestone Kensho Quartz (island). Also shows open display wall shelving with decorative brackets. Island is embellished with feature end panels.
- 2 For a different look match your mock inframe to your door. Here we have used all Dust Grey. You can also introduce a funky floor design using a multi coloured geometric pattern.

Handle: K1-202 (See page 217).



- 1 Feature plinth used on the end panels of the island create a clever decorative element.
- 2 A stunning Aldana media unit painted Dust Grey is the perfect addition to this open plan living space.



MADISON

Effortlessly chic and stylish, the Madison shaker door with v-groove makes an impressive statement with its simple detailing and selection of accompanying designer accessories. Classic in both function and form Madison will fit happily into any sized space to bring you a kitchen that works hard and looks fabulous.

- 1 Madison kitchen painted Porcelain and Marine is used to create a modern twist to a traditional setting. Window seats make a stunning and practical storage solution. Worktop is Dekton Kovik.
- 2 The T&G feature on the compact island with breakfast bar and open shelves in Light Oak is reflected on the wall run to enhance the simplistic styling of the Porcelain units.
- 3 Sideboard featuring drawerpack and moulded skirting plinth.

Handles: K1-256 and K1-258 (See page 219).



CLONMEL

Clonmel offers a touch of class and exudes quality with its oak construction, chunky appearance and range of accompanying accessories. A perfect choice for a country setting.

- 1 Clonmel kitchen painted Light Blue and Gun Metal Grey. Worktop is Silestone Eternal Calacatta Gold Quartz. Also shows island with solid oak slatted open shelving, chunky pilasters to create a 'framed' look and feature end panels that also appear at the end of the base units.
- 2 Dresser with mock inframe construction and designer storage and display area including oak shelving and wine rack.
- 3 A bootroom is a practical addition to any rural dwelling, so why not make it coordinate with your kitchen. Shown here in Light Blue with cushioned seating and pullout storage drawers.

Handles: K1-212 and K1-215 (See page 216).





GEORGIA

Open to a host of colour combinations this is your chance to create a rural kitchen with a difference. Georgia's smooth finish and traditional shaker style provide an impeccable canvas to which you can apply elements that reflect your true personality. Regardless of your choice of decor, appliances or colour Georgia adapts itself entirely, resulting in a country kitchen paradise.

- 1 Rustic style brass handles and knobs with horizontal detailing complement the linear design of the kitchen.
- 2 Create your own luxury oak larder featuring internal drawers and spice rack.
- 3 Georgia kitchen painted Pantry Blue. Worktop is Statuario Maximus Quartz. Also shows oxidised brass strips that form bespoke designer backsplash to tie in with the look of the handles.

Handles: K1-221 and K1-223 (See page 219).

FLORENCE

Rural design staples such as open ceiling beams, natural floor materials and traditional style windows set the scene here for the Florence country kitchen. No matter what size the space is, you can devise a kitchen with real flair by incorporating key accessories such as an overmantle, pastry bench, T&G panelling and solid oak inset trays.

1 Florence kitchen painted Dust Grey and Porcelain. Worktops are solid oak (island) and Silestone Kensho Quartz (back run). Also shows island/pastry bench and solid oak inset tray and spice drawer.

Handles: K1-169 and K1-172 (See pages 217 & 218).



1 Florence kitchen painted Graphite and Light Grey. Worktop is solid oak. Also shows island with overhang adorned with decorative brackets and worktop dresser with glazed frames.
2 Traditional beaded panels grace either end of the island. Also shows solid oak inset tray and spice drawer.

Handles: K1-168 and K1-171 (See pages 214 & 216).



WAKEFIELD

This traditional door with beaded centre panel finds its place in a modern setting with the use of a simple linear cornice which reflects the architecture. The subtle natural colour of Cardamom is complemented with the Light Oak island, creating a warmth to this bright contemporary space.



1 Wakefield painted Cardamom with Light Oak Island. Featuring tall larder units with glazed top boxes. The island is given prominence with its chunky modular pilasters and open shelf pastry bench. Worktop is Dekton Fossil.

Handles: K1-271 and K1-268 (See page 219).





1 The open plan living space complements the kitchen with a coffee table and wide media unit in Cardamom with contrasting Light Oak open shelves.



JEFFERSON

The ornately constructed Jefferson door with its moulded, raised centre panel will bring your rural space to a different level. Available in oak or with any painted finish and offering a large selection of specially appointed accessories, the number of design possibilities are endless with this classically elegant kitchen.



- 1 Jefferson in Light Oak and painted Ivory combines lots of rich tones and textures creating a feeling of cosiness and homeliness. Worktops are Dekton Milar.
- 2 Dresser with solid oak wine glass holder and wine rack.
- 3 Extra storage and seating are cleverly incorporated with cushioned window seats.

Handles: K1-214 and K1-218 (See page 220).





1 Jefferson kitchen painted Mussel. Worktop is Silestone Eternal Calacatta Gold Quartz. Shows interesting island design with curved doors encompassing a wine cooler.

Handle: K1-86 (See page 216).

Dramatic Overtones

Strong colours, bold textures and innovative styling are key features of the Dramatic Overtones collection. Designed for those with an adventurous spirit, these kitchens will make an audacious lifestyle statement. The use of compelling and unique finishes including a weathered metal look and textured timbers provide the perfect canvas to showcase these contemporary door styles and accessories.



SETTING THE SCENE

When it comes to Dramatic Overtones there is no holding back. It is all about making a daring statement and powerful colours are the key to ensuring your dramatic kitchen is a success. Strong blues, greens and greys are prevalent and when combined with finishes such as brass and bold textures such as stained ash or cross scratched oak you will create a kitchen space that is certain to provoke the senses.





FLORENCE

When a room is flooded with natural light it gives you the opportunity to be as bold and dramatic as you dare. The classic style of Florence with its smooth finish and beaded profile is dramatically combined with dark olive walls and brass accents to create a rich and vibrant living space.



- 1 Florence kitchen painted Slate Blue features a window seat providing an area to relax in addition to extra storage. Worktop is SapienStone Arabescato.
- 2 Using the same style as the kitchen a small home office is placed in the window nook, providing a light and airy place to work.

Handles: K1-273 and K1-277 (See page 215).



1

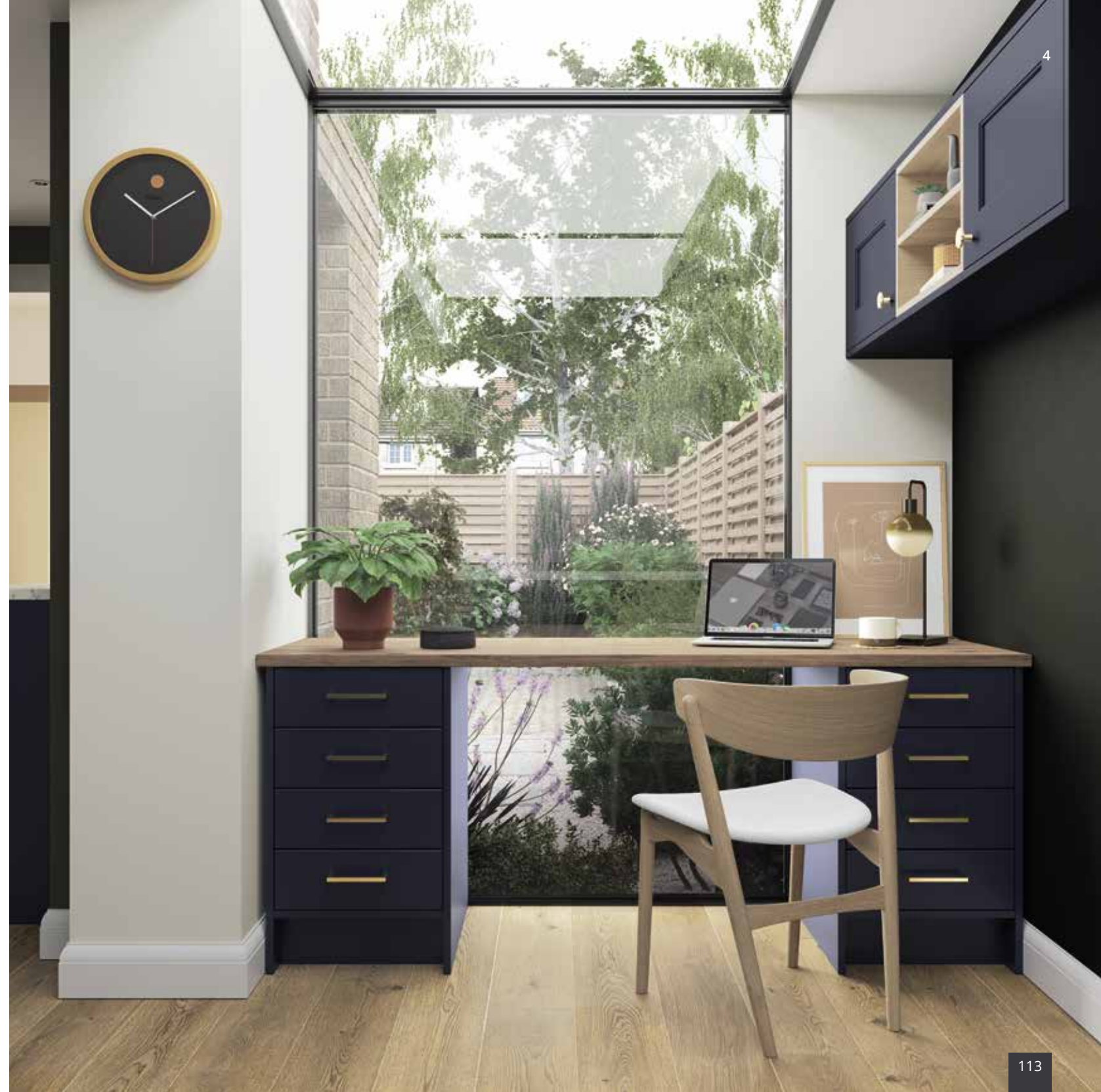
- 1 This stunning island with breakfast bar is a central position to view all areas within the open plan home.
- 2 Window seats are the perfect addition to any home. Combined here beside patio doors to really make the living space extend into the garden.
- 3 Glazed doors add a point of interest to the island.
- 4 A perfectly compact home office with amazing views of the garden.



2



3



4



2



1



3



4

- 1 Florence kitchen painted Viridian and Graphite. Worktop is Moorland Fog Quartz on base units and solid oak on island. Island features double door end panel and under plinth.
- 2 Mantle shelf supported by ornate corbels.
- 3 Dresser with oak open shelving flanked by door/drawer combination. Also shows application of pilasters throughout the kitchen design for an overall freestanding look.
- 4 Spice drawer and solid oak inset tray combination.

Handles: K1-192 and K1-194 (See page 217).

MADISON

This stunning injection of warm Vintage Pink complements the Parched Oak timber while contrasting with the cool tones of Slate Blue. Madison's simplistic shaker door with timber grain finish offers you endless possibilities to create your perfect statement kitchen and living space.



1 Madison kitchen painted Vintage Pink and Slate Blue. Features extra tall larder units with pullout drawers below. Open shelves in Parched Oak reflect the dramatic architectural features of the skylight. Worktop is Dekton Aura.

Handles: K1-263 and K1-266 (See page 214).





1 A combination of Vinatge Pink and Parched Oak flatter the linear design of these furniture pieces providing a warm sophisticated look in the living area.



- 1 Madison Kitchen painted Marine and Light Teal. Worktop is Silestone Iconic White Quartz.
- 2 Maximise your kitchen space by including a recessed tall appliance housing unit.
- 3 Dresser top with Georgian frames.

Handles: K1-155 and K1-158 (See page 219).





ALDANA

The sophistication of the Aldana door is given a dynamic injection of colour to create a decidedly modern look. Innovative design features and uncomplicated styling emphasise the clean lines of this versatile door and result in a dramatic contemporary living space.



1 Aldana kitchen painted Graphite. Worktop is Dekton Kelya Ultra Compact.
Handles: K1-197 and K1-200 (See page 215).



- 1 Island displaying double door end panel framed with under plinth and chunky pilasters.
- 2 An Aldana media unit in Graphite perfectly completes the furnishing requirements of this industrial living space.



GEORGIA

Offering a selection of on-trend colours the Georgia kitchen is a shaker-style door featuring a smooth painted finish and is ideal for those who like to experiment! A truly versatile design that lends itself equally to a wide range of styles from modern industrial to cosy traditional.



- 1 Georgia kitchen painted Marine. Worktops are Neolith Calacatta CO1R. Features include Light Oak open shelving and a multi functional island, perfect for entertaining and casual dining.
- 2 A Georgia media unit silhouettes the industrial brick wall in the living space.

Handle: K1-261 and K1-264 (See page 214).





- 1 Tall larder unit with glazed top boxes. Replacing the standard glazing with ribbed glass adds to the industrial look and feel.
- 2 Media unit painted Marine with contrasting Parched Oak open shelf perfectly complements the detailing in the kitchen.





1



2

- 1 Georgia painted Forest Green with antique copper handles, combines dramatic styling with the practicalities of family living. Worktop is Silestone Pearl Jasmine
- 2 Storage solutions at their best, the window seating and sideboard prove popular in many busy homes.
- 3 Features such as the curved doors and the oak pullout trays with spice drawers give the kitchen a touch of drama.

Handle: K1-262 and K1-265 (See page 219).



3





- 1 Georgia kitchen painted Airforce. Worktop is Silestone Eternal Statuario Quartz. Also shows open shelving unit in Parched Oak and mantle shelf.
- 2 Unit featuring display area with Parched Oak back panel and shelving painted Airforce.
- 3 Island with integrated open shelving.

Handle: K1-225 (See page 220).



WAKEFIELD

Often seen in a more traditional setting, Wakefield is successfully used here to add a more eclectic look and feel to this contemporary open plan living space. Brass and orange accessories effectively contrast with the rich, on trend Marine colour. Open shelving features heavily to add practical and decorative storage and gives this modern living space a sense of warmth and homeliness.

- 1 Wakefield kitchen painted Marine creates a dramatic element to this modern rural home. Worktops are Caesarstone Supernatural 5143 White Attica.
- 2 Stunning dining area furnished with a complementary sideboard painted Marine.

Handle: K1-277 (See page 215).





- 1 This sideboard painted Marine shows off the beautiful grain finish and beaded profile of the Wakefield door.
- 2 The multilevel island is designed to effectively divide and reflect the open plan architecture and create functional spaces.



KENSINGTON

Kensington's versatility lends itself well to many contemporary settings and this barn style architecture proves that point. A bold statement which dramatically combines Kensington Graphite with a backdrop of rustic wall finishes in earthy tones. Natural light reflects off the vast ceiling to balance the dark elements of this amazing living space.



1



2



3



- 1 Kensington kitchen in Graphite featuring simple linear styling. Worktop is Dekton Sirocco.
- 2 A magnificent island divides the various living zones of this open plan space.
- 3 Coffee table in Graphite complements the kitchen.

Handles: K1-279 (See page 215)

HARBORNE

This eclectic Harborne kitchen with bold colours and quirky architecture is certainly a statement space. The white walls are contrasted with polished concrete floors and complementary furniture pieces add the finishing touches that create a seamless flow from the kitchen to the living room.



- 1 Harborne painted Graphite and Chicory Red (using our Colour Match Service). Worktop is Neolith Nero Marquina.
- 2 The island's wide pan drawers add to the linear theme of this kitchen. Chicory Red is contrasted with open shelves in Graphite.





- 1 Customise your furniture 'beyond the kitchen' to create a semi-fitted modern dresser. Plenty of personality can also be injected into freestanding pieces by using contrasting colours as shown here on the coffee table and sideboard.
- 2 A stunning Harborne sideboard in Chicory Red (Colour Match Service) with open shelves in Graphite and quirky brass legs.



KELSO & ZOLA MATTE

City living at its best in this contemporary apartment which features the dramatic ash grain of Kelso stained Pacific Blue paired with the contrasting smooth finish of Zola Matte painted Marine. This handleless design is completed with a handleless rail painted Marine.



- 1 Kelso stained Pacific Blue is framed perfectly with Zola Matte and Handleless rail both painted Marine. Worktop is Caesarstone 4011 Cloudburst Concrete.
- 2 Simply styled sideboard in Zola Matte Marine with contrasting open shelves in Kelso Pacific Blue.

Furniture handles: K1-206 (See page 221).





- 1 Kelso's stained Ash timber is best shown off in these tall larder doors.
- 2 This stunning sideboard has dual functions as a media unit and storage solution in this small apartment.
- 3 A side table in Zola Matte painted Marine and Kelso stained Pacific Blue adds the finishing touch to this quirky living space.

Furniture handles: K1-206 (See page 221).



- 1 A magnificent kitchen featuring Kelso stained Truffle Grey contrasted with Zola Matte painted Graphite. Worktop is Dekton Laos.
- 2 Floating Island in Zola Matte Graphite features a handleless aluminium rail extending around all sides to create a seamless linear design. A solid Oak breakfast bar complements the architectural support beams.



2



- 1 A Zola Matte sideboard painted Graphite takes pride of place in the dining area.
- 2 Detail of the Ash timber grain of Kelso stained Truffle Grey. End Panels and plinth are Zola Matte painted Graphite. Handleless rail also painted Graphite.

Handles: K1-204 (See page 215).

Furniture legs: Brushed Chrome (See page 222).



ZOLA MATTE

A stunning open-plan living space with bold decor choices showcases this stunning Zola Matte kitchen. The smooth painted finish of the doors seen here in dramatic Slate Blue, creates the perfect base for adding rich complementary colours. The design possibilities are truly endless!



1 Zola Matte painted Slate Blue is showcased in this large open plan living space. Worktops are Dekton Fossil. The smooth matte finish is contrasted with the 3D texture of the slatted wooden wall feature and the rich, warm copper tones used to style the room.

Handle: K1-280 (See page 221).





- 1 Quirky double-sided sideboard with open shelves is used to partition the living area from the kitchen.
- 2 The living area is further complemented with a contemporary media unit and sits perfectly with the metal frame shelving unit.

Furniture Legs: Brushed Chrome (See page 222).





1 Zola Matte painted Zingy Orange (using our Colour Match Service, see page 209), Dust Grey and Graphite. Worktop is Titanium composite surface. Achieve a framed look for this slab door by including a moulding surround. LED strip lighting above and below wall units can add further drama to your kitchen design.

Handle: K1-201 (See page 215).

ZOLA MATTE, REZANA & FERRO

Three door finishes that were born to live together, the Zola, Rezana and Ferro ranges celebrate their simple construction by sporting a spectacular selection of finishes. Rezana, with its cross scratched timber finish is the perfect complement to Zola Matte and Ferro's unique oxidised copper look, resulting in a match made in heaven.

- 1 Island features Ferro in Oxidized Copper and tall oven housing features Rezana in Espresso Oak. Worktop is Silestone Cemento Spa Quartz.
- 2 Larder with Zola Matte painted Lava and featuring open shelving in Rezana Espresso Oak.
- 3 Detail showing handleless rail system painted Lava with Ferro drawer fronts in Oxidized Copper.
- 4 Detail showing brushed, cross scratched finish of the Rezana in Espresso Oak.
- 5 Rezana panels used to create a dramatic feature wall.

Handle: K1-158 (See page 219).



ZOLA MATTE & FERRO

Push the limits of your imagination with the combined appeal of Zola Matte and Ferro. Shown here displaying a mesmerising colour mix of smooth brass and Marine which complements perfectly with the exposed brick walls and dark timber elements.

- 1 Innovatively designed storage unit for displaying books and household items, also used as a doorway surround.
- 2 Zola Matte painted Marine and Ferro painted Brass. Worktop is Silestone Carbono Quartz.
- 3 Handleless rail system painted Graphite provides a clean, streamlined look.

Handle: K1-223 (see page 219).



STRADA MATTE

Strada's cutting-edge door with integrated J-handle perfectly accommodates a blend of daring tone-on-tone styling. A kitchen designed for those who appreciate colour, the dark Marine is contrasted with vibrant, rich and earthy tones to create an eclectic and luxuriously styled room.

1 Strada Matte Marine is styled beautifully in this stunning city apartment where the dramatic colour tones are contrasted with the natural timbers of the herringbone floor. Worktops are Dekton Vera.





1



1 Continuing with the tone-on-tone theme the living space is furnished with a Strada Matte media unit which is detailed with antique brass legs.

Furniture Legs: Antique Brass
(See page 222).

STRADA MATTE & REZANA

Strada Matte's smooth finish lends itself so well to being partnered with textured and dramatic elements like rough timber and concrete. This contemporary kitchen sees it contrasted with the rustic cross scratched oak of Rezana.



1 Strada Matte painted Slate Blue with feature wall units in Rezana stained Espresso. Worktop is Silestone Nebula Lyra.

REZANA & FERRO

A true representation of the urban dream, this mix of Rezana's rich real wood veneer and Ferro's cool iron paint finish work to create an exciting habitat for lovers of the 'industrial' look. This minimalist kitchen loft design is offset nicely by signatures of the industrial style such as exposed brickwork and piping and is given a touch of vibrancy with the inclusion of an interior herb garden.

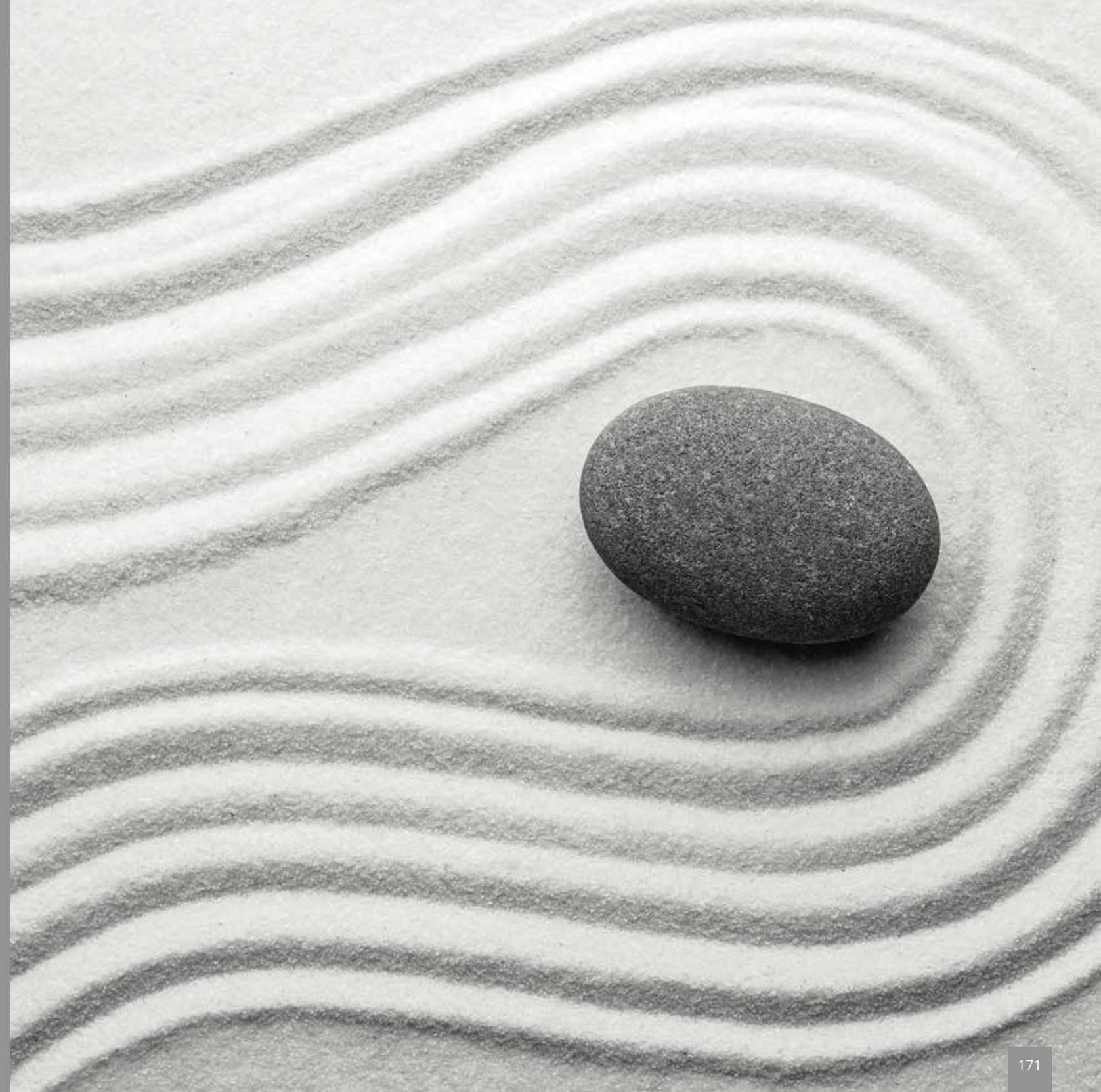


- 1 Rezana stained Carbon Oak and Ferro painted Iron. Worktop is Dekton Orix Ultra Compact. Also shows custom designed vessel to hold potted herbs.
- 2 Pan drawers showing solid oak secret cutlery drawer with dovetail joints and inconspicuously positioned matte black handles.
- 3 The iron finish of Ferro sits comfortably alongside Rezana's dark timber.

Handle: K1-234 (See page 221).

Sleek Serenity

Smooth textures and subdued tones capture the essence of the Sleek Serenity collection. Created without compromise, these kitchens provide a dream setting for those who appreciate the benefits and beauty of ergonomic design. Usually occupying a bright and airy space and using sleek finishes and minimalist features, we show what is needed to build your modern paradise.



SETTING THE SCENE

Capture a sleek and serene feeling with the use of soothing tones and textures that will help to create your home's special sanctuary. The use of a mellow colour palette including greys, ivory and white is key and when combined with an abundance of space and light will result in a kitchen that will bring out your inner calm. Incorporate natural materials such as timber, stone or marble to establish a sense of contrast and balance to your design.



HARBORNE

A modern handleless Harborne kitchen provides a statement contrast with the dark walls in this urban townhouse, mixing original features such as coving and fireplace with the linear design of the kitchen, to produce a uniquely serene living space.



- 1 This Harborne kitchen painted Light Grey makes a feature of the original fireplace by adding base units in the alcoves and adding black metal open shelves above to create a point of interest. Worktops are Dekton Splendor and solid oak timber.
- 2 Tall units provide ample storage and cleverly house the fridge and freezer so as to retain a sleek and linear look.



1

- 1 Harborne's sleek linear design is accentuated here with the use of wide pan drawers throughout the island and in the chimney breast alcoves.
- 2 This handleless door with its shallow recessed centre panel combine the simplicity of a slab door with the detailing of a shaker, making it extremely versatile.



2



3

ZOLA GLOSS & TAVOLA

A stunning example of what Sleek Serenity really means, the combined features of the Zola Gloss and Tavola doors bring beauty and functionality together effortlessly. A sense of balance is achieved with contrasting colours and finishes and an open plan room design allows for plenty of free movement around the kitchen.



- 1 Zola Gloss in White and Tavola stained Parched Oak. Worktop is custom made concrete. Crisp white cabinets and cool concrete are offset beautifully by the warmth of natural timber.
- 2 Handleless aluminium rail system dispenses the need for handles. Can also be painted in any of our 26 standard colours.





- 1 Zola Gloss in Dust Grey and Cashmere with Tavola stained Carbon. Handleless rail system painted Dust Grey is used for a clutter-free look. Worktop is Silestone Marengo Quartz.
- 2 The Carbon stain used on the Tavola door accentuates its unique horizontal grain.



1

- 1 Zola Gloss in White and Light Grey. Worktops are White Marble and Solid Oak. Also shows dual level island creating ample seating space.
- 2 Bespoke designer storage and display unit.

Handle: K1-164 (See page 217).



2



1 Zola Gloss in Porcelain and Graphite. Worktops are Silestone Lyra Quartz (back run) and Silestone Negro Anubis Quartz (island). Also shows handleless rail system with aluminium finish and designer breakfast bar.



2 Zola Gloss in Dust Grey. Introducing a fusion of textures such as timber and brick to your gloss kitchen adds creative variation to your overall design. Worktop is Silestone Snowy Ibiza Quartz.

Handle: K1-147 (See page 218).



ZOLA SOFT-MATTE & REZANA

The adaptability of Zola's slab design allows for a myriad of possibilities when it comes to devising your serene kitchen. Available in a Gloss, Soft-Matte or Matte finish, you can achieve a sleek and spacious looking kitchen through a choice of muted colours and clever design layout.



- 1 Zola Soft-Matte in Porcelain is contrasted with Rezana Weathered Silver throughout this Urban apartment with its compact kitchen and home office. Kitchen worktop is Corian Neutral Aggregate.
- 2 Home office in Porcelain features a pullout filing drawer, open shelves and desktop are Rezana Weathered Silver.
- 3 Compact sink area with decorative timber shelf.

Handles: K1-274 and K1-282 (See page 215).



- 1 Zola Soft-Matte Light Grey and Graphite. Worktops are Silestone Lagoon Quartz (back run) and Silestone Eternal Emperador Quartz (island). Also shows handleless rail system with aluminium finish.
- 2 A Zola Soft-Matte sideboard in Graphite with push to open doors and drawers, adds another focal point in this contemporary living space.

Furniture Legs: Brushed Chrome (See page 222).

TAVOLA

Tavola in real wood veneer brings a trio of complementary finishes together in this rectilinear kitchen design. Floor to ceiling units are cleverly used to maximise storage capacity and extensive open shelving creates a feeling of spaciousness as well as offering a place for displaying cherished items. The inclusion of a compact central island provides a useful eating and food preparation area.



- 1 Tavola painted Shell and Dust Grey and stained Weathered Silver oak. Worktops are Pietra Grey Quartz (island) and Fresh Concrete Quartz (back kitchen run and low level units).
- 2 Low level cabinets and floating open shelving create a focal point in the living area.
- 3 Tall corner unit with integrated open shelving stained Weathered Silver oak.
- 4 Compact island with raised breakfast bar shelf and cubby hole storage.

Handles: K1-181 and K1-188 (See page 218).

STRADA MATTE & TAVOLA

The uncomplicated pairing of the Strada and Tavola doors really excels when it comes to the smaller kitchen, providing a clean and orderly environment. Both ranges offer a large number of accompanying accessories that are easily adaptable so that you can devise specialised features that fit your particular space.



1 Strada Matte painted Lava and Tavola stained Carbon Oak. Worktop is Tundra Grey Marble. The horizontal grain of the Tavola cabinets helps elongate the look of the kitchen and the island has been custom made to fit its unique shape.

Handle: K1-248 (See page 221).



1 This urban office retreat helps maintain the feel of more space by replicating the earthy two tone finishes of silky smooth Strada painted Lava and the rich horizontal grain in Tavola Carbon Oak to make the two spaces feel like one.





- 1 Strada Matte painted Light Grey (wall and base units) and Dust Grey (island). Worktop is Boston Concrete. Traditional meets modern with ornately styled home decor sitting harmoniously alongside contemporary kitchen cabinetry.
- 2 Graphite coffee table with angular brushed chrome legs complement the dark tactile feel on the unit.
- 3 Wall hung contemporary media unit painted Dust Grey and Graphite features open shelves and spot light.



1



- 1 Strada Matte painted Graphite. Worktop is Silestone Iconic White Quartz.
- 2 Strada Matte painted Porcelain. Worktop is Silver Grey composite surface. Also shows curved pilasters on the island and the main kitchen. Dark timber flooring creates a pleasing contrast.



2



STRADA GLOSS

Ideally suited to contemporary urban living Strada shows its versatility by offering numerous accessories that can be used to develop your own unique look. Whether you appreciate the softness of curves or prefer simple straight lines Strada Gloss has just what you are looking for.

1 Strada Gloss in White and Aldana painted vivid green (using our Colour Match Service, see page 209). The Aldana freestanding larder unit with painted ash grain finish makes itself at home beside Strada's gloss cabinets. Worktop is Dekton Keon Ultra Compact.

Handle: K1-205 (See page 217).



- 1 In this home office, located on the mezzanine floor, the natural warm colour palette provides a calming influence. The Strada Gloss Light Grey finish on the cabinetry reflects the abundance of light from the window. Plenty of storage means it remains clutter free. All of this, will no doubt get your creative juices flowing.
- 2 Strada Gloss kitchen in Light Grey features recessed tall appliance housing units, wall units with letterbox frames and a floating larder unit. Worktop is Corian Domino Terrazzo.
- 3 External feature posts on the island allow for the continuous flow of the Strada J-handle below the worktop.



1



2



3



1 This contemporary Strada Gloss kitchen in Dust Grey features a recessed tall appliance housing unit and waterfall worktops in Eternal Calacatta Gold Quartz.



2 Strada Gloss in Cashmere. Worktop is Belgium Bluestone Limestone. Island features plinth strip lighting for the ultimate designer look.
3 Detail showing open curved door with integrated J-handle exposing colour matched internal shelving.

