



BOWOOD

Sandy Lane Lodge

Sandy Lane, Chippenham, SN15 2PY



TO LET UNFURNISHED ON AN ASSURED SHORTHOLD TENANCY
Rent £1,165 per calendar month, plus outgoings

For further information please contact Lorraine Hulbert at the Bowood Estate Office
Tel: 01249 810 953 | E-mail: propertymanager@bowood.org



SITUATION AND DESCRIPTION

Sandy Lane Lodge is a charming and unique cottage that benefits from a generous garden and off-road parking in the sought after village of Sandy Lane.

The property enjoys easy access to Chippenham, Calne, Devizes and Melksham. Chippenham also has the benefit of a mainline railway station (London – 1hr 15mins) and access to J17 of the M4.

The accommodation is arranged over two floors and comprises:

- Kitchen
- Dining Room
- Sitting room
- Two bedrooms
- Bathroom (WC, washbasin, and double shower)

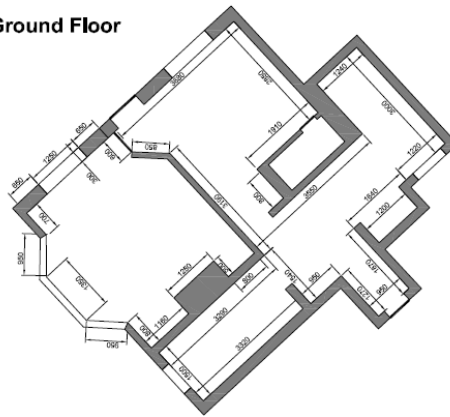
GENERAL INFORMATION

TENURE	The property will be offered unfurnished on a Periodic Tenancy Agreement.
RENT	£1,165 per calendar month, payable in advance by standing order on the first day of each month.
DEPOSIT	£1,344 being equivalent to five weeks rent.
SERVICES	Mains electricity and water. Gas central heating throughout.
COUNCIL TAX	Band D
VIEWINGS	Viewings strictly by appointment.

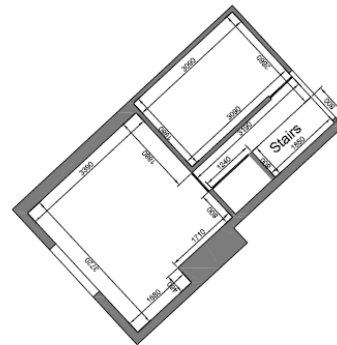


FLOORPLAN

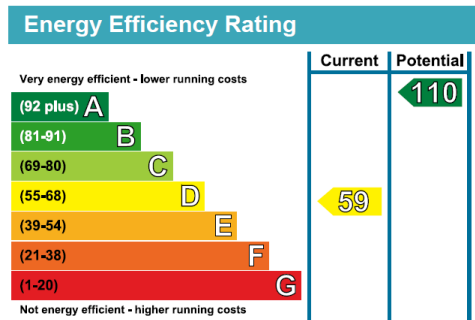
Ground Floor



First Floor



ENERGY EFFICIENCY RATING



Particulars prepared 5th May 2026 Every care has been taken to ensure that these particulars are correct, but parties must satisfy themselves as to the accuracy of all statements. No warranty is intended or implied. Successful tenants should keep a copy of these particulars for future reference.



BOWOOD

