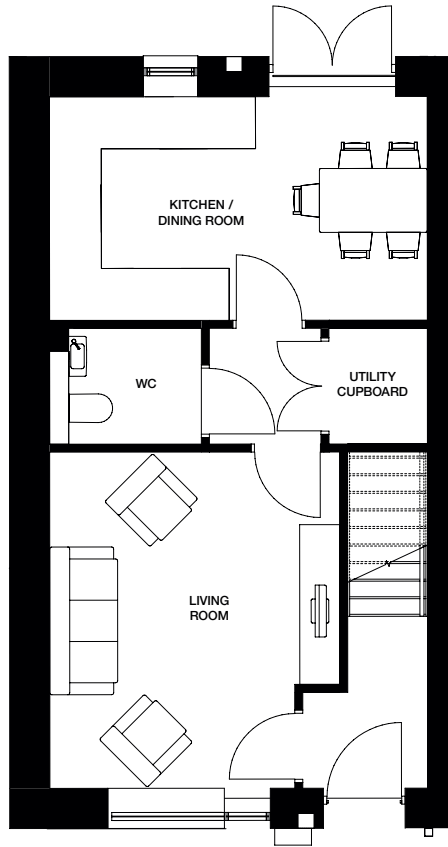


HARRIER WAY
3 Bedroom House



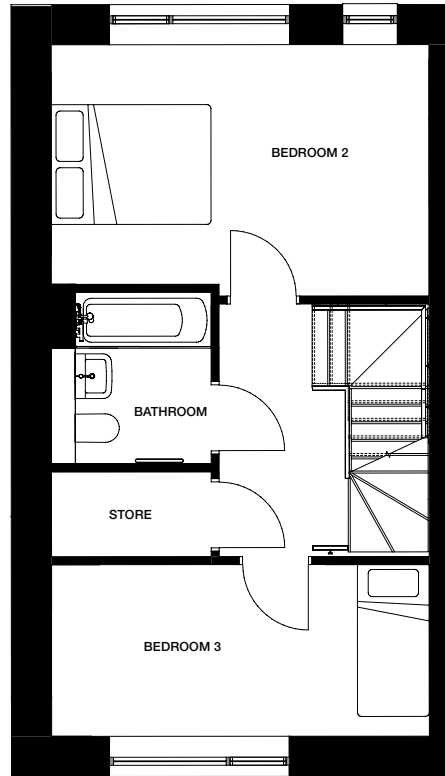
HATFIELD
RISE
HATFIELD

HARRIER WAY
 3 bedroom house
 105sqm | 761sqft



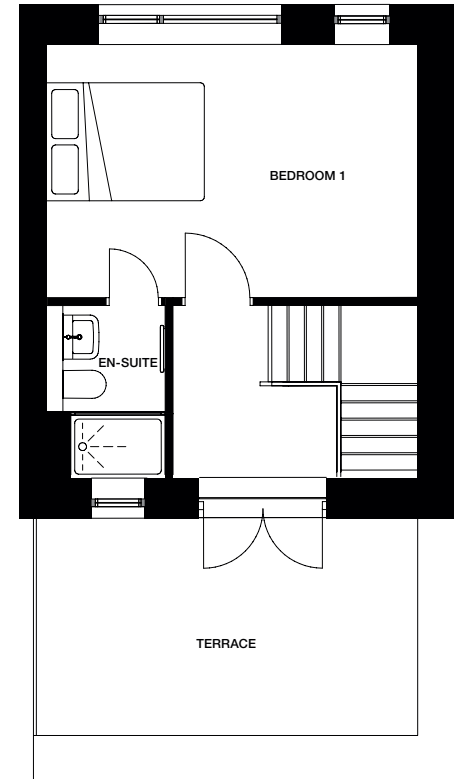
Ground floor

Kitchen / Dining Room 4730mm x 2800mm 15'6" x 9'2"
Living Room 4210mm x 3630mm 13'9" x 11'11"



First floor

Bedroom 2 4730mm x 3000mm 15'6" x 9'10"
Bedroom 3 4730mm x 2148mm 15'6" x 7'0"



Second floor

Bedroom 1 4730mm x 3146mm 15'6" x 10'4"

Plots 2, 4, 6, 8, 10, 12, 14 & 16

External finishes, landscaping and roofing of final building may vary. Dimensions stated are within 50mm (2") but should not be used as a basis for furnishings, furniture or appliance spaces etc. Dimensions for such purposes must be verified against actual site measurements. Please check individual plot details with our sales team.





SPECIFICATION

HOUSES

Lovell Homes come with a high specification included as standard, because we know the small things can make a big difference. To guarantee a quality finish for your home we have partnered with some of the most sought-after brands in interiors

Kitchen

- Cranbrook Platinum kitchen
- Concrete effect laminate worktops with matching upstand
- Stainless steel splashback
- Stainless steel 1.5 bowl sink
- Zanussi double oven
- Electrolux gas stainless steel hob
- Zanussi extractor hood
- Zanussi integrated fridge freezer
- Zanussi dishwasher
- Zanussi integrated washer/dryer
- Chrome downlighters
- LED under cupboard lighting

Bathroom

- Ceramic tiles applied around sanitaryware up to cill height (and returned)
- Ideal Standard white sanitaryware with chrome brassware
- Shaver socket
- Thermostatic shower
- Heated towel rail
- Chrome downlighters

En-Suites

- Ceramic tiles. Fully tiled shower cubicle and splash back to wash hand basin
- Ideal Standard white sanitaryware with chrome brassware
- Thermostatic shower
- Towel rail
- Chrome downlighters

Internal and decoration

- White paint to walls and ceiling
- White satinwood finish to internal joinery
- Weathered Oak Amtico flooring to hallway, kitchen, lounge and bathroom/WC/en-suite
- Carpet to landings, bedrooms and stairs
- Double glazed Upvc windows

External

- Chrome doorbell
- Bike store
- Recycling bin enclosure

Electrical and Security

- Video/Audio Access Control
- Composite front door
- BT connection points to lounge and master bedroom
- TV aerial outlet and Sky Q to lounge
- Combination boiler
- Smoke detector
- Carbon monoxide detector
- Wiring for burglar alarm
- 10 year NHBC Warranty

T: 020 3993 3558
hatfieldrise.co.uk

Specification correct at time of print however may change at any time - please speak to Sales Executive for confirmation.



LOVELL
HOMES